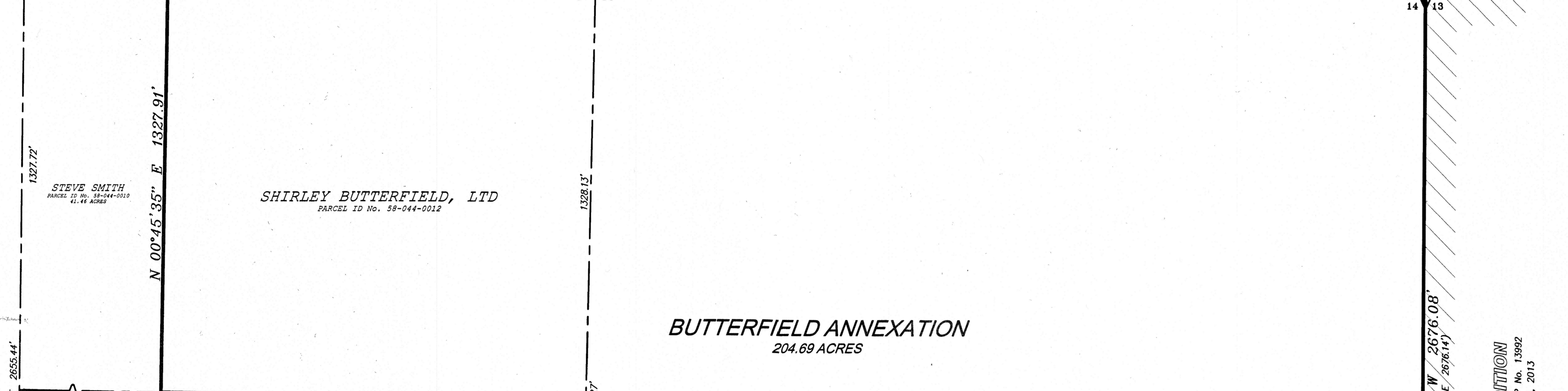


NORTHWEST CORNER  
SECTION 14  
TOWNSHIP 5 SOUTH,  
RANGE 2 WEST, S.L.B.&M.

NORTH QUARTER CORNER  
SECTION 14  
TOWNSHIP 5 SOUTH,  
RANGE 2 WEST, S.L.B.&M.

NORTHEAST CORNER  
SECTION 14  
TOWNSHIP 5 SOUTH,  
RANGE 2 WEST, S.L.B.&M.

S 89°03'23" E 1363.63'  
S 89°27'38" E 2646.02'



SHIRLEY BUTTERFIELD, LTD  
PARCEL ID No. 58-044-0012

**BUTTERFIELD ANNEXATION**  
204.69 ACRES

SHIRLEY BUTTERFIELD, LTD  
PARCEL ID No. 58-044-0011

STEVE SMITH  
PARCEL ID No. 58-044-0013  
245.86

CENTER QUARTER CORNER  
SECTION 14  
TOWNSHIP 5 SOUTH,  
RANGE 2 WEST, S.L.B.&M.

WEST QUARTER CORNER  
SECTION 14  
TOWNSHIP 5 SOUTH,  
RANGE 2 WEST, S.L.B.&M.

EAST QUARTER CORNER  
SECTION 14  
TOWNSHIP 5 SOUTH,  
RANGE 2 WEST, S.L.B.&M.

SOUTH QUARTER CORNER  
SECTION 14  
TOWNSHIP 5 SOUTH,  
RANGE 2 WEST, S.L.B.&M.

NORTHEAST CORNER  
SECTION 14  
TOWNSHIP 5 SOUTH,  
RANGE 2 WEST, S.L.B.&M.

**CLEARVIEW ESTATES ANNEXATION**  
ENTRY No. 88521:2012 MAP No. 13764  
RECORDED OCTOBER 11, 2012

CAMP WILLIAMS  
NO PARCEL INFO PROVIDED ONLINE

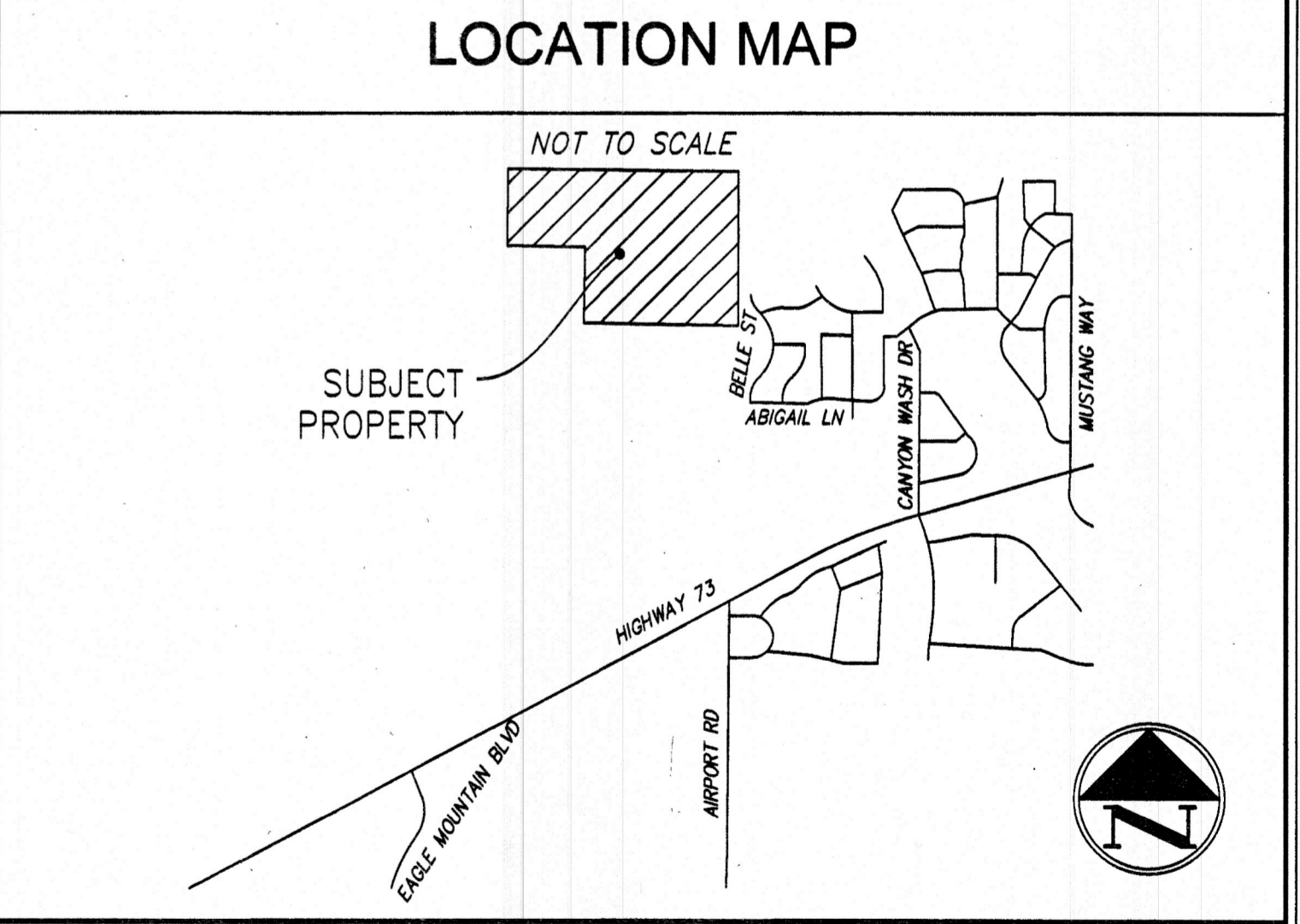
POINT OF BEGINNING

**SURVEYOR'S CERTIFICATE:**  
I, WILLIS D. LONG DO HEREBY CERTIFY THAT I AM A LICENSED PROFESSIONAL LAND SURVEYOR IN THE STATE OF UTAH IN ACCORDANCE WITH TITLE 58, CHAPTER 22, PROFESSIONAL ENGINEERS AND LAND SURVEYORS LICENSING ACT, AND THAT I HAVE COMPLETED A SURVEY OF THE PROPERTY DESCRIBED ON THIS PLAT IN ACCORDANCE WITH SECTION 17-23-17 AND HAVE VERIFIED ALL MEASUREMENTS, AND THAT THIS PLAT, IN UTAH COUNTY, UTAH, HAS BEEN DRAWN CORRECTLY TO THE DESIGNATED SCALE AND IS A TRUE AND CORRECT REPRESENTATION OF THE HEREIN DESCRIBED LANDS INCLUDED IN SAID ANNEXATION, BASED UPON DATA COMPILED FROM RECORDS IN THE UTAH COUNTY RECORDER'S OFFICE AND FROM SAID SURVEY MADE BY ME ON THE GROUND. I FURTHER CERTIFY THAT THE REQUIREMENTS OF APPLICABLE STATUTES AND ORDINANCES OF UTAH COUNTY HAVE BEEN COMPLIED WITH.  
DATE: JUNE 10, 2020  
WILLIS D. LONG  
LICENSE NO. 10708886  
Professional Surveyor Seal: WILLIS D. LONG, LICENSE NO. 10708886, 6-10-2020

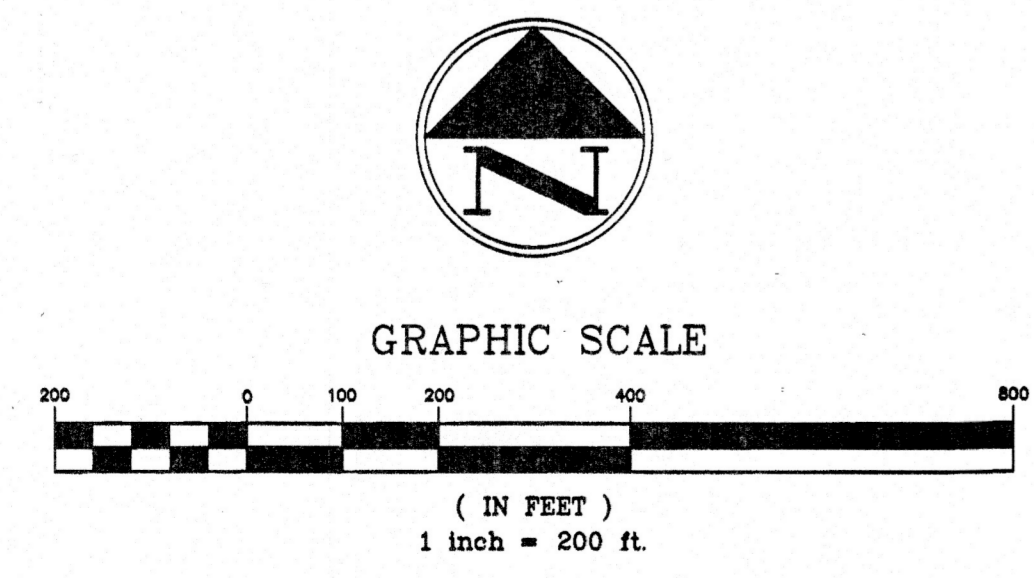
**ANNEXATION BOUNDARY DESCRIPTION:**  
BEGINNING AT THE NORTHEAST CORNER OF SECTION 14, TOWNSHIP 5 SOUTH, RANGE 2 WEST, SALT LAKE BASE AND MERIDIAN AND RUNNING THENCE, SOUTH 00°10'27" WEST, ALONG THE SECTION LINE COMMON WITH SECTIONS 13 AND 14, A DISTANCE OF 2676.08 FEET TO THE EAST QUARTER CORNER OF SAID SECTION 14; THENCE NORTH 89°02'13" WEST, ALONG THE EAST-WEST CENTER QUARTER LINE, A DISTANCE OF 2687.78 FEET TO THE CENTER QUARTER CORNER OF SAID SECTION 14; THENCE NORTH 01°04'15" EAST, ALONG THE NORTH-SOUTH CENTER QUARTER LINE, A DISTANCE OF 1328.13 FEET TO THE EAST-WEST 40-ACRE LINE OF THE NORTHWEST QUARTER OF SECTION 14; THENCE, NORTH 89°02'48" WEST, ALONG SAID EAST-WEST 40-ACRE LINE, A DISTANCE OF 1356.42 FEET TO THE NORTH-SOUTH 40-ACRE LINE OF SAID NORTHWEST QUARTER OF SECTION 14; THENCE NORTH 00°45'35" EAST, ALONG SAID NORTH-SOUTH 40-ACRE LINE, A DISTANCE OF 1327.91 FEET TO THE SECTION LINE COMMON WITH SECTIONS 11 AND 14; THENCE, SOUTH 89°03'23" EAST, ALONG SAID SECTION LINE, A DISTANCE OF 1363.63 FEET TO THE NORTH QUARTER CORNER OF SAID SECTION 14; THENCE, SOUTH 89°27'38" EAST, ALONG THE SECTION LINE COMMON WITH SECTIONS 11 AND 14, A DISTANCE OF 2646.02 FEET TO THE NORTHEAST CORNER OF SECTION 14 AND THE POINT OF BEGINNING OF THIS DESCRIPTION.  
CONTAINS 204.69 ACRES (MORE OR LESS)

**ACCEPTANCE BY LEGISLATIVE BODY:**  
THIS IS TO CERTIFY THAT WE, THE UNDERSIGNED EAGLE MOUNTAIN CITY COUNCIL, HAVE ADOPTED A PETITION OF ITS INTENT TO ANNEX THE TRACT OF LAND SHOWN HEREIN AND HAVE SUBSEQUENTLY ADOPTED AN ORDINANCE ANNEXING SAID TRACT INTO EAGLE MOUNTAIN CITY, UTAH AND THAT A COPY OF THE ORDINANCE HAS BEEN PREPARED FOR FILING HEREWITH ALL IN ACCORDANCE WITH UTAH CODE SECTION 10-2-418, AS REVISED, AND THAT WE HAVE EXAMINED AND DO HEREBY APPROVE AND ACCEPT THE ANNEXATION OF THE TRACT AS SHOWN AS PART OF SAID CITY AND THAT SAID TRACT OF LAND IS TO BE KNOWN HEREFTER AS THE BUTTERFIELD ANNEXATION.  
DATED THIS 17 DAY OF December, A.D. 2020  
ENT 31207:2021 Map # 17550  
ANDREA ALLEN  
UTAH COUNTY RECORDER  
2021 Feb 18 4:42 pm FEE 0.00 BY PA  
RECORDED FOR EAGLE MOUNTAIN CITY  
HINDLEY ADDITION  
ENTRY No. 79645:2013 MAP No. 13992  
RECORDED AUGUST 19, 2013  
Corporate Seal: EAGLE MOUNTAIN CITY, EST. 1906, STATE OF UTAH  
Attest: [Signature] RECORDER  
December 17, 2020 DATE

**UTAH COUNTY SURVEYOR**  
THIS PLAT HAS BEEN REVIEWED BY THE COUNTY SURVEYOR AND IS HEREBY CERTIFIED AS A FINAL LOCAL ENTRY PLAT, PURSUANT TO UTAH CODE ANNOTATED 817-23-20 AS AMENDED.  
[Signature]  
UTAH COUNTY SURVEYOR  
01/07/21  
DATE  
County of Utah Surveyor Seal



**ANNEXATION PLAT**  
**BUTTERFIELD ANNEXATION**  
EAGLE MOUNTAIN, UTAH COUNTY, UTAH  
SCALE: 1" = 200 FEET



**LEGEND**  
--- SECTION LINE  
--- EXISTING CITY BOUNDARY LINE  
--- ANNEXATION BOUNDARY LINE  
( xxxx ) INFORMATION IN PARENTHESIS IS RECORD INFORMATION BASED ON THE ANNEXATION MAPS REFERENCED HEREON

**JL ENGINEERING**  
JL Engineering, PC  
7866 South 2325 East  
South Weber, Utah  
ph 801.866.7702  
jason@jengpc.com

PATH: Butterfield Annexation.dwg PLOTTED: December 1, 2020 2:19PM

830-2-12-5-11-28