

THE PRISON RELOCATION COMMISSION RECENTLY RELEASED A DOCUMENT TITLED "UTAH STATE PRISON SITING PROGRAM SITE SCREENING ASSESSMENT REPORT – ROUND 2. IT IDENTIFIES, SCORES AND RANKS THE SITES UNDER CONSIDERATION FOR THE PRISON AS A RESULT OF THE "SECOND ROUND" OF SOLICITATIONS BY THE PRC.

This document includes some sites that were re-scored from round one, while omitting others. I believe this has led to some confusion. For a more in-depth interpretation of the report, please see my blog post titled "The Process Drags On" at [mayorsvoice.com](http://mayorsvoice.com). I will give an overview of key points here.

The State Legislature passed HB 454, which the governor has since signed, that identifies the full list of potential prison relocation sites that may be considered. Following are the sites identified in the bill, in no particular order:

- I-80 / 7200 West-Expanded (SLC)
- SR 112/ Depot Boundary (Tooele County)
- Lake Mountains West (Eagle Mountain)
- Cedar Valley South (Fairfield)
- SR 138 Industrial Park (Tooele County)

Though you will find information about many other potential sites in various documents including the round two report, they are now irrelevant and cannot be considered for the relocation of the Draper Prison.

The scoring of the sites which we see in the round two site assessment report are preliminary and are likely to change. The logic of the scoring is flawed. A more in-depth analysis will be needed to accurately identify some of the more technical characteristics of each site. I believe the process has been mishandled on many levels. The PRC and the consultant have communicated that the site scoring is preliminary until an in-depth analysis is completed, though the inconsistent scoring has been used to make decisions about future actions. While the scoring may be preliminary, it should be accurate and in this case, it clearly is not.



Mayor Pengra and his daughter helped deliver lunch to EM resident Phillip Black during Meals on Wheels' National March for Meals Week.

I have posted a site scoring comparison on my blog illustrating the differences in criteria and scoring between round one and round two. The changing of the criteria resulted in "leftover" points which were "redistributed equally across other criteria to maintain a potential score of 100 points" (Site Screening Assessment Report – Round 2, Pg. 6, paragraph 2). The changing of the established criteria in the middle of a process which relies on "quantitative analysis" manipulates of the outcome. Whether manipulation is intentional or not is of no consequence; the result is the same.

We see the effect of this in the comparison of the I-80/7200 West, and the Cedar Valley South Site's original scores against their new scores. The Cedar Valley South site has a 25% increase in total score (from 61 points to 76 points), while the I-80/7200 South site total score decreases by 2% (76 points to 75 points). The redistributed potential points essentially rearrange the weighting of the categories.

I am going to contest the manner in which the sites have been scored. If the prison relocates to the Cedar Valley South site, it will have a significant and detrimental impact on Eagle Mountain's traffic. We already struggle with meeting the traffic needs of our rapidly growing population. We will stand shoulder to shoulder with Fairfield and oppose this very frustrating process for their wellbeing, as well as our own.

MAYOR CHRIS PENGRA  
[www.mayorsvoice.com](http://www.mayorsvoice.com)  
[mayor@emcity.org](mailto:mayor@emcity.org)



## ATTENTION: ALL EAGLE MOUNTAIN RESIDENTS

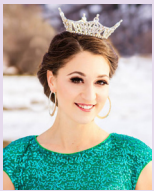
Did you know that currently, 70% of Eagle Mountain residents participate in the curbside single stream recycle program. We all know that by recycling material such as aluminum, cardboard, paper and plastic, we conserve our natural resources and use less energy to re-manufacture new products. But, did you know that a portion of the money generated by selling the recycle material is returned to our schools in Eagle Mountain. Also, by diverting material from going to the landfill, the City saves money and helps to extend the life of our landfill.

The cost is \$4.00 per month (the cost of a second garbage can is \$6.25 per month). Contact the City Utilities Billing Department and fill out the utilities application form to sign up now.

### REMEMBER TO: RECYCLE, REUSE, REDUCE!

The annual recycling opt-out period will be April 15-30, 2015. The opt-out period is for those enrolled in the curbside recycling program who wish to discontinue the service. If you participate in curbside recycling and wish to continue, no action is necessary. The opt-out form is enclosed with this utility bill, and is also available on the City website, under the Utility Billing department. The form must be submitted to the utility billing office between April 15-30. If you have questions, please contact the billing office at 801-789-6609.

## 2015 Miss Eagle Mountain Pageant



Saturday, May 2 at 7 p.m.  
Frontier Middle School  
Tickets: \$6

Purchase at door or on the City website, Calendar.

Join us for a  
**FUN RUN**  
to benefit an adoptive family

APRIL 25, 2015  
10:00 am to noon

**PRIZES! FOOD! FUN!**  
4045 E. Pony Express Parkway  
Eagle Mountain, UT 84005  
Register at [emcity.org](http://emcity.org)

Contact Miss Eagle Mountain for more info  
Alyssa Diaz: 801.851.0917  
[alysadiatz1@hotmail.com](mailto:alysadiatz1@hotmail.com)

**UNITED**for**ADOPTION**



## GRAB SOME FOODTRUCK FARE AND WEIGH IN ON THE FUTURE OF BICYCLING AND WALKING IN EAGLE MOUNTAIN.

**WHEN:** Tuesday, April 28<sup>th</sup>, 5:00 - 7:00 pm

**WHERE:** Campus Business Park parking lot\*  
(Southeast corner of SR73 & Ranches Pkwy.)

**WHY:** We need your input to shape the future of bicycling and walking in Eagle Mountain. Public input will be used to shape infrastructure and policy recommendations to make bicycling and walking convenient, safe and fun for Eagle Mountain residents.

\* Backup location at Eagle Mountain City Hall in case of inclement weather

# NEWS BRIEFS

## Spring Clean-up Dump Passes

Eagle Mountain City will not be offering spring clean up dumpsters this year as we have typically done in April, due to demands on staff time. The City offers two free dump passes per household per year. For the month of April we will provide an additional dump pass if needed. Passes are available at the reception desk or utility billing office at City Hall. The Ranches HOA also offers two dump passes per year. The City is contracted with Intermountain Regional Landfill (IRL) in Fairfield for dump services. More information about IRL and dump passes is available on the City website, Community section.

## Pony Express Days

Eagle Mountain City's annual festival, Pony Express Days, will be held June 2-6, 2015. Traditional events, including the carnival, parade, and family fun night are planned. Volunteers are needed to run the scavenger hunt and geocaching events. If you are interested, please contact Chas at [cglenn@emcity.org](mailto:cglenn@emcity.org).

## Education Meeting

Representative David Lifferth has invited State Superintendent Brad Smith, as well as other elected leaders (Jeff Moss, Jake Andregg, Joel Wright) who represent our area, to discuss education issues with our residents. The meeting will be held on Friday, May 1 at 7 p.m. in the auditorium at Westlake High School.

## Questar Gas Information

Residents may be getting a call from Questar's customer service within the next 30 days asking for verification and updates of account information and inquiring about interest in paperless billing. If you have any questions about your account, please call 800-323-5517. Also, you may see an increase in Questar personnel and vehicles in The Ranches beginning May 1 as they will be doing some retrofitting of the electronic transmitters on some residential meters to tie in to their system.