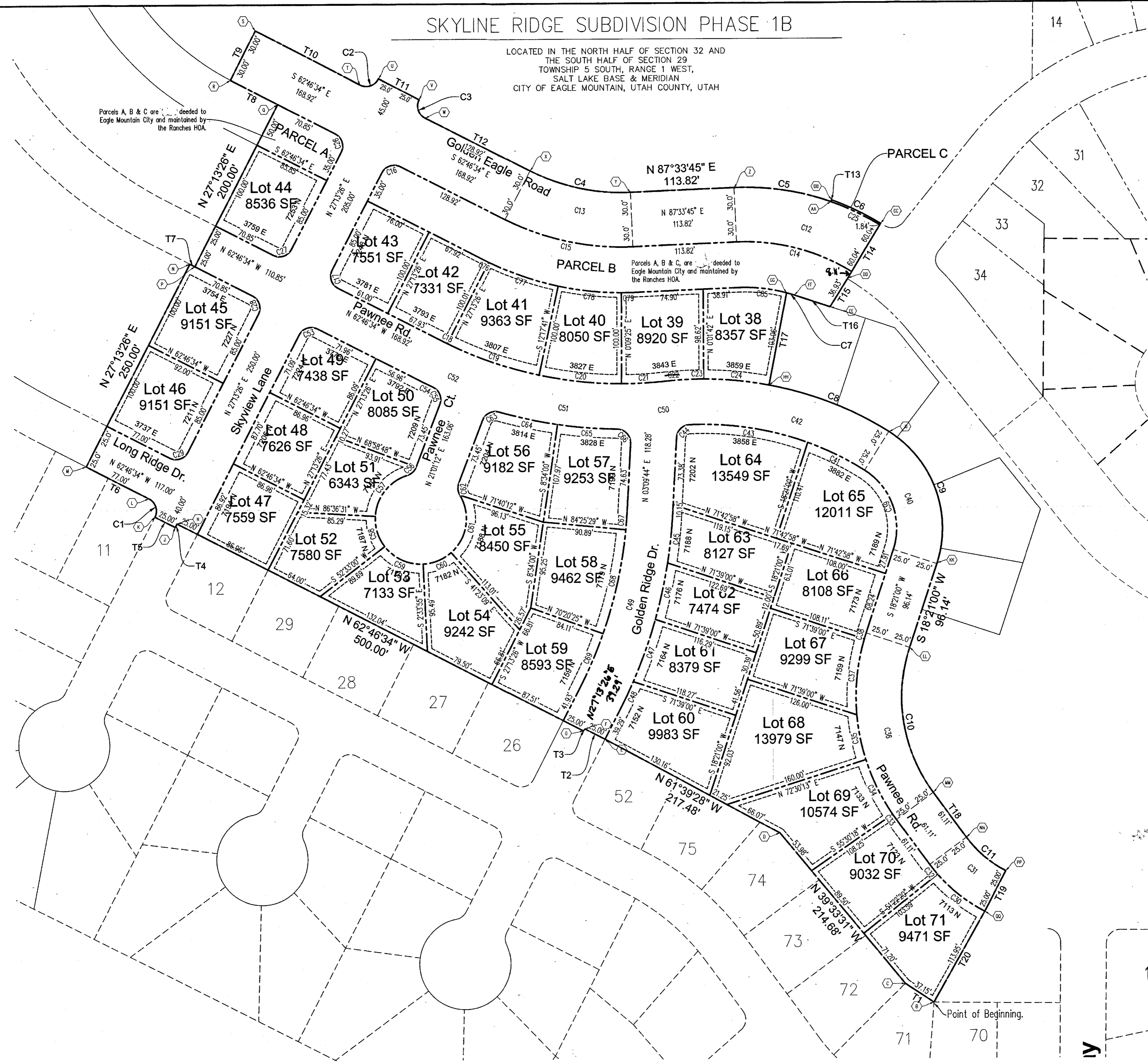


NORTH
1" = 100'

SKYLINE RIDGE SUBDIVISION PHASE 1B

LOCATED IN THE NORTH HALF OF SECTION 32 AND
THE SOUTH HALF OF SECTION 29
TOWNSHIP 5 SOUTH, RANGE 1 WEST,
SALT LAKE BASE & MERIDIAN
CITY OF EAGLE MOUNTAIN, UTAH COUNTY, UTAH

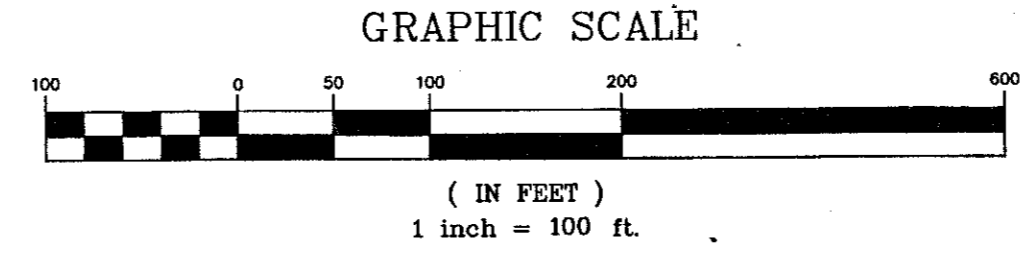
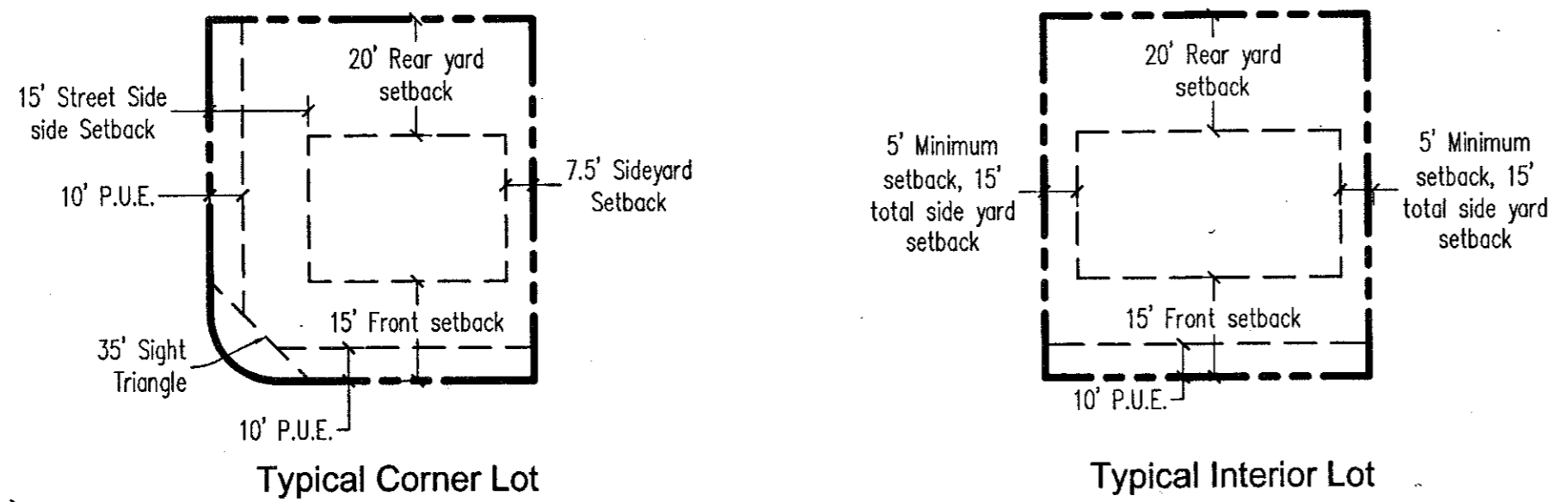
Parcels A, B & C are dedicated to Eagle Mountain City and maintained by the Ranches HOA.



Curve Data Table					
Curve	Radius	Length	Chord	Bearing	Delta
C1	15.00'	23.56'	21.21'	N 17°46'34" W	89°58'58"
C2	15.00'	23.56'	21.21'	N 72°13'26" E	89°58'58"
C3	15.00'	23.56'	21.21'	S 17°46'34" E	89°58'58"
C4	280.00'	113.89'	112.62'	S 77°36'25" E	29°39'37"
C5	280.00'	108.01'	107.34'	S 81°23'14" E	22°06'05"
C6	330.00'	59.85'	59.77'	S 84°04'07" E	10°23'30"
C7	170.00'	8.83'	8.83'	N 73°04'43" W	2°58'39"
C8	380.00'	141.88'	141.04'	S 68°22'35" E	21°23'21"
C9	125.00'	165.88'	153.97'	S 19°39'57" E	76°01'54"
C10	175.00'	166.85'	160.60'	S 8°58'06" E	54°37'35"
C11	125.00'	57.02'	56.53'	S 49°20'45" E	26°08'15"
C12	250.00'	149.92'	147.69'	N 75°15'28" W	34°21'35"
C13	250.00'	129.42'	127.98'	S 77°36'25" E	29°39'41"
C14	280.00'	132.38'	130.39'	N 75°11'57" W	34°28'36"
C15	280.00'	144.95'	143.34'	S 77°36'25" E	29°39'41"
C16	15.00'	23.56'	21.21'	S 72°13'26" E	90°00'00"
C17	15.00'	23.56'	21.21'	S 17°46'34" E	90°00'00"
C18	430.00'	5.38'	5.38'	S 63°08'05" E	0°43'01"
C19	430.00'	106.66'	106.39'	S 70°35'58" E	14°12'43"
C20	430.00'	91.09'	90.92'	S 83°46'27" E	12°08'15"
C21	430.00'	48.33'	48.30'	N 86°56'15" E	6°26'21"
C22	380.00'	41.88'	41.83'	S 86°52'24" W	6°18'36"
C23	380.00'	41.85'	41.83'	S 86°52'24" W	6°18'36"
C24	380.00'	72.30'	72.19'	N 84°31'16" W	10°54'02"
C25	328.54'	59.50'	59.42'	N 64°16'48" W	10°22'35"
C26	15.00'	23.56'	21.21'	N 17°46'34" W	90°00'00"
C27	15.00'	23.56'	21.21'	N 72°13'26" E	90°00'00"
C28	15.00'	23.56'	21.21'	S 17°46'34" W	90°00'00"
C29	15.00'	23.56'	21.21'	N 72°13'26" E	90°00'00"
C30	175.00'	66.20'	65.81'	S 51°34'51" E	21°40'22"
C31	150.00'	68.43'	67.84'	S 49°20'45" E	26°08'16"
C32	175.00'	13.64'	13.64'	S 38°30'37" E	4°28'01"
C33	225.00'	7.00'	7.00'	S 35°23'10" E	1°46'54"
C34	225.00'	66.75'	66.51'	S 25°59'45" E	16°59'55"
C35	225.00'	50.16'	50.05'	S 11°06'37" E	12°46'21"
C36	200.00'	190.68'	183.54'	S 85°48' E	54°37'37"
C37	225.00'	83.71'	83.23'	S 5°56'05" W	21°19'01"
C38	225.00'	6.90'	6.90'	S 17°28'18" E	1°45'26"
C39	75.00'	99.55'	92.38'	N 19°39'57" W	76°01'54"
C40	100.00'	132.70'	123.16'	N 19°39'57" W	76°01'54"
C41	330.00'	69.58'	69.46'	N 63°43'21" W	12°04'54"
C42	355.00'	239.16'	234.67'	N 76°38'55" W	38°36'01"
C43	330.00'	131.99'	131.11'	N 81°13'18" W	22°54'58"
C44	15.00'	22.03'	20.10'	S 45°14'29" W	84°09'29"
C45	525.00'	54.31'	54.29'	N 6°07'33" E	5°55'38"
C46	525.00'	63.25'	63.21'	N 12°32'28" E	6°54'11"
C47	525.00'	72.04'	71.98'	N 19°55'24" E	7°51'43"
C48	525.00'	30.87'	30.87'	N 25°32'21" E	3°22'10"
C49	500.00'	209.98'	208.44'	N 15°11'35" E	24°03'41"
C50	455.00'	13.97'	13.97'	N 84°35'50" E	1°45'31"
C51	455.00'	202.85'	201.17'	S 81°45'06" E	25°32'37"
C52	455.00'	49.26'	49.24'	S 65°52'41" E	6°12'13"
C53	15.00'	23.56'	21.21'	S 72°13'26" W	90°00'00"
C54	480.00'	13.14'	13.14'	S 63°33'38" E	1°34'07"
C55	15.00'	22.35'	20.34'	N 21°39'45" W	85°21'53"
C56	15.00'	13.62'	13.16'	N 47°01'48" E	52°01'13"
C57	50.00'	60.78'	57.11'	S 39°12'57" W	69°38'56"
C58	50.00'	35.64'	34.88'	S 17°01'45" E	40°50'29"
C59	50.00'	48.10'	46.26'	S 65°00'28" E	55°06'56"
C60	50.00'	33.88'	33.23'	N 68°01'27" E	38°49'13"
C61	50.00'	69.48'	64.02'	N 8°48'26" E	79°36'52"
C62	15.00'	13.62'	13.16'	S 4°59'24" E	52°01'12"
C63	15.00'	22.35'	20.34'	S 63°42'09" W	85°21'53"
C64	480.00'	65.50'	65.45'	S 77°31'27" E	7°49'07"
C65	480.00'	65.50'	65.45'	S 85°20'34" E	7°49'07"
C66	15.00'	24.19'	21.86'	N 43°02'41" W	92°24'51"
C67	475.00'	20.00'	20.00'	N 4°22'08" E	2°24'46"
C68	475.00'	116.77'	116.47'	N 12°37'03" E	14°05'04"
C69	475.00'	62.71'	62.66'	N 23°28'30" E	7°33'51"
C70	330.00'	5.38'	5.38'	S 63°14'37" E	0°56'05"
C71	330.00'	80.60'	80.40'	S 70°42'30" E	13°59'41"
C72	330.00'	69.91'	69.78'	S 83°46'27" E	12°08'14"
C73	330.00'	14.94'	14.94'	N 88°51'35" E	2°35'41"
C85	170.00'	53.02'	52.81'	N 83°30'09" W	17°52'13"

Line Table		
Line	Length	Direction
T1	37.15'	N 56°31'21" W
T2	25.00'	N 62°46'34" W
T3	2.64'	S 27°13'26" W
T4	4.29'	S 27°13'26" W
T5	25.00'	N 62°46'34" W
T6	77.00'	N 62°46'34" W
T7	6.15'	S 62°46'34" E
T8	58.07'	N 62°46'34" W
T9	60.00'	N 27°13'26" E
T10	128.92'	S 62°46'34" E
T11	50.00'	S 62°46'34" E
T12	128.92'	S 62°46'34" E
T13	2.06'	N 20°44'32" E
T14	70.00'	S 31°07'36" W
T15	36.93'	S 32°04'25" W
T16	41.33'	N 71°35'24" W
T17	103.06'	S 10°55'45" E
T18	61.11'	S 36°16'37" E
T19	50.00'	S 27°35'07" W
T20	113.96'	S 29°31'15" W

Public Utility Note:
 All front Lot utility easements, adjacent to a city street is to be 10.00' wide.
 All Side yard and rear yard utility easements are to be 5.00' on each side of the lot line.



14459 sheet 2 of 2

ENT. 923762014 Map # 14459
 JEFFERY SMITH
 UTAH COUNTY RECORDER
 2014 Dec 23 10:01 AM FEE \$7.00 BY SS
 RECORDED FOR EAGLE MOUNTAIN CITY

PREPARED BY

 DUDLEY AND ASSOCIATES INC.