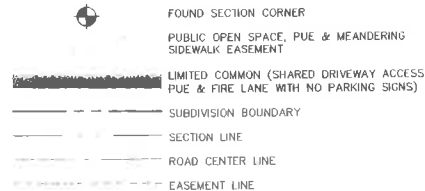
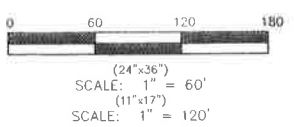
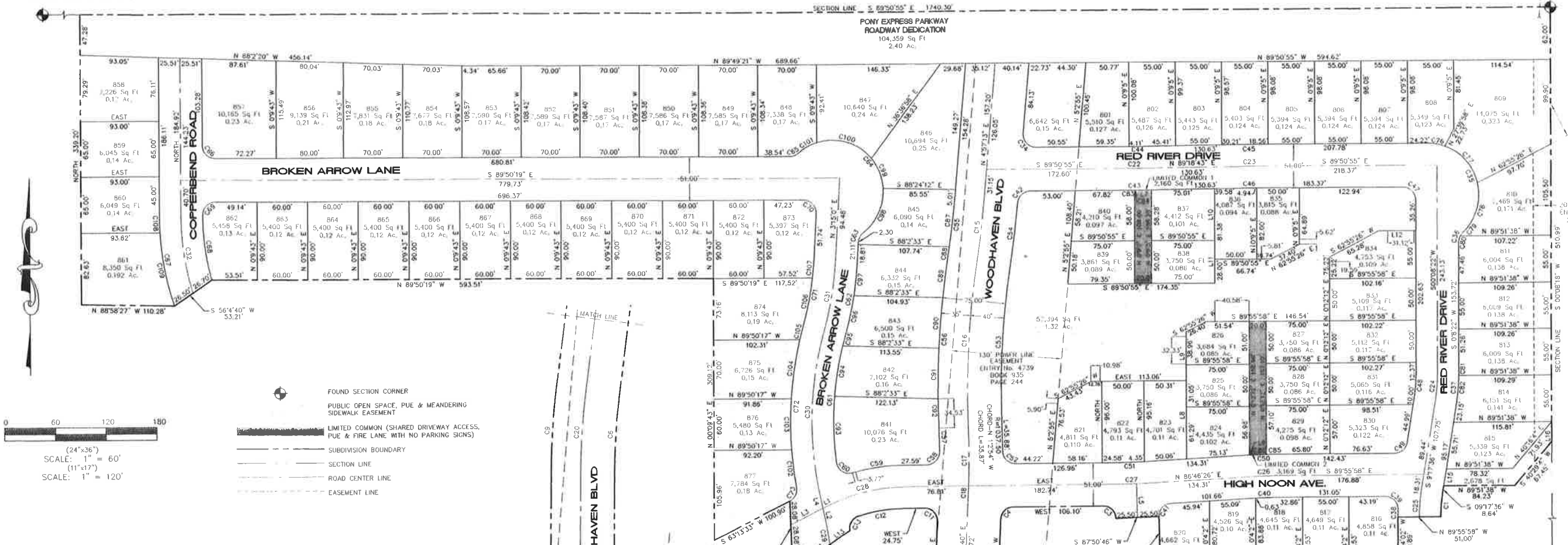
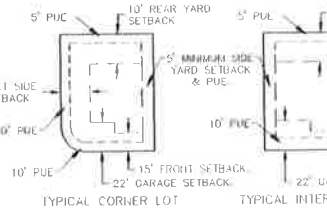
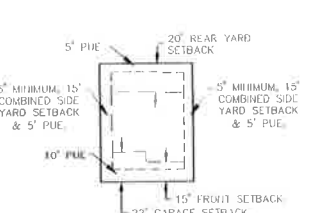


FOUND BRASS MONUMENT
NORTH QUARTER CORNER SECTION 28,
TOWNSHIP 5 SOUTH, RANGE 1 WEST,
SALT LAKE BASE AND MERIDIAN.

FOUND BRASS MONUMENT
NORTHEAST CORNER SECTION 28,
TOWNSHIP 5 SOUTH, RANGE 1 WEST,
SALT LAKE BASE AND MERIDIAN.



UNIT	ADDRESS	UNIT	ADDRESS
801	5089 EAST RED RIVER DRIVE	840	5088 EAST RED RIVER DRIVE
802	5101 EAST RED RIVER DRIVE	841	7908 NORTH BROKEN ARROW LN.
803	5113 EAST RED RIVER DRIVE	842	7922 NORTH BROKEN ARROW LN.
804	5123 EAST RED RIVER DRIVE	843	7932 NORTH BROKEN ARROW LN.
805	5133 EAST RED RIVER DRIVE	844	7944 NORTH BROKEN ARROW LN.
806	5143 EAST RED RIVER DRIVE	845	7954 NORTH BROKEN ARROW LN.
807	5153 EAST RED RIVER DRIVE	846	7966 NORTH BROKEN ARROW LN.
808	5163 EAST RED RIVER DRIVE	847	5033 EAST BROKEN ARROW LN.
809	7968 NORTH RED RIVER DRIVE	848	5017 EAST BROKEN ARROW LN.
810	7956 NORTH RED RIVER DRIVE	849	5003 EAST BROKEN ARROW LN.
811	7944 NORTH RED RIVER DRIVE	850	4989 EAST BROKEN ARROW LN.
812	7936 NORTH RED RIVER DRIVE	851	4977 EAST BROKEN ARROW LN.
813	7924 NORTH RED RIVER DRIVE	852	4963 EAST BROKEN ARROW LN.
814	7914 NORTH RED RIVER DRIVE	853	4949 EAST BROKEN ARROW LN.
815	7904 NORTH RED RIVER DRIVE	854	4937 EAST BROKEN ARROW LN.
816	5146 EAST HIGH NOON AVE.	855	4923 EAST BROKEN ARROW LN.
817	5138 EAST HIGH NOON AVE.	856	4907 EAST BROKEN ARROW LN.
818	5128 EAST HIGH NOON AVE.	857	4893 EAST BROKEN ARROW LN.
819	5118 EAST HIGH NOON AVE.	858	7983 NORTH COPPERBEND ROAD
820	5108 EAST HIGH NOON AVE.	859	7973 NORTH COPPERBEND ROAD
821	5093 EAST HIGH NOON AVE.	860	7957 NORTH COPPERBEND ROAD
822	5083 EAST HIGH NOON AVE.	861	7947 NORTH COPPERBEND ROAD
823	5103 EAST HIGH NOON AVE.	862	4892 EAST BROKEN ARROW LN.
824	5115 EAST HIGH NOON AVE.	863	4902 EAST BROKEN ARROW LN.
825	5117 EAST HIGH NOON AVE.	864	4914 EAST BROKEN ARROW LN.
826	5119 EAST HIGH NOON AVE.	865	4924 EAST BROKEN ARROW LN.
827	5133 EAST HIGH NOON AVE.	866	4936 EAST BROKEN ARROW LN.
828	5135 EAST HIGH NOON AVE.	867	4948 EAST BROKEN ARROW LN.
829	5137 EAST HIGH NOON AVE.	868	4958 EAST BROKEN ARROW LN.
830	7907 NORTH RED RIVER DRIVE	869	4972 EAST BROKEN ARROW LN.
831	7917 NORTH RED RIVER DRIVE	870	4984 EAST BROKEN ARROW LN.
832	7927 NORTH RED RIVER DRIVE	871	4994 EAST BROKEN ARROW LN.
833	7937 NORTH RED RIVER DRIVE	872	5006 EAST BROKEN ARROW LN.
834	7947 NORTH RED RIVER DRIVE	873	5016 EAST BROKEN ARROW LN.
835	5132 EAST RED RIVER DRIVE	874	7937 NORTH BROKEN ARROW LN.
836	5118 EAST RED RIVER DRIVE	875	7923 NORTH BROKEN ARROW LN.
837	5106 EAST RED RIVER DRIVE	876	7909 NORTH BROKEN ARROW LN.
838	5108 EAST RED RIVER DRIVE	877	7897 NORTH BROKEN ARROW LN.
839	5088 EAST RED RIVER DRIVE		



SETBACK AND EASEMENT DETAIL
-TITS-
55' MIN. FRONTAGE
(LOTS 801-820, 841-877)

SETBACK AND EASEMENT DETAIL
-NTS-
PATIO, GARDEN COURT, CLUSTER LOTS
(LOTS 821-840)

AREA TABULATIONS

TOTAL AREA:	16.86 ACRES
TOTAL ACREAGE IN LOTS:	10.66 ACRES
TOTAL OPEN SPACE:	1.45 ACRES
TOTAL IMPROVED OPEN SPACE:	1.45 ACRES
PONY EXPRESS DEDICATION:	2.35 ACRES
OVERALL DENSITY:	4.57 LOTS PER ACRE
TOTAL # OF LOTS:	77

PLAT "B"
SHEET 2 OF 2

SILVER LAKE

A RESIDENTIAL SUBDIVISION

EAGLE MOUNTAIN, UTAH COUNTY, UTAH
SCALE: 1" = 60' FEET

Notes:
1) No structures shall be built over the sewer and stormdrain easements. The lots that these easements run through are: 809, 810, 811, 812, 813, 814, 815, 821, 826, 834, 835, 841.
Limited Common 1 - Shared driveway area owned in common and maintained by lots 837, 838, 839 and 840.
Limited Common 2 - Shared driveway area owned in common and maintained by lots 824, 825, 826, 827, 828 and 829.

NOTARY PUBLIC SEAL: TRAVIS TRANE
CITY-COUNTY ENGINEER SEAL
CLERK-RECORDED SEAL

14011 sheet 2 of 2