

PLANE COORDINATE TABLE

NORTHING	EASTING
739,256.94	1,872,239.00
739,244.02	1,873,130.48
739,185.41	1,873,129.66
738,781.33	1,873,239.37
738,642.42	1,873,323.45
738,320.89	1,873,437.12
738,135.16	1,873,462.41
737,486.77	1,873,851.23
737,334.11	1,874,062.47
737,182.00	1,874,123.32
737,182.00	1,874,147.52
737,182.00	1,874,182.53
737,182.00	1,874,174.53
737,258.54	1,874,175.59
737,238.72	1,874,185.94
737,182.00	1,874,144.96
737,185.61	1,874,122.89
737,185.65	1,874,078.22
737,180.78	1,874,054.49
737,220.96	1,874,018.43
737,244.26	1,874,026.78
737,255.88	1,874,025.66
737,275.69	1,874,015.31
737,425.99	1,873,807.32
738,125.05	1,873,388.11
738,310.77	1,873,362.83
738,603.59	1,873,259.31
738,742.50	1,873,175.23
738,788.55	1,873,149.31
738,789.78	1,872,979.03
738,859.24	1,872,897.44
738,854.53	1,872,873.69
738,857.54	1,872,457.21
738,862.63	1,872,433.48
738,857.60	1,872,375.99
738,880.87	1,872,359.00
738,881.65	1,872,235.27

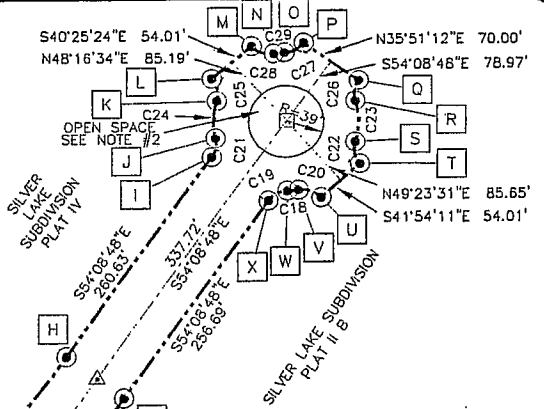
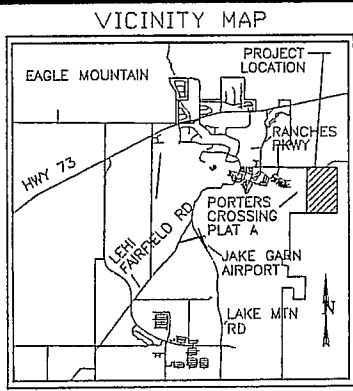
FACTOR = 0.999712052

CURVE TABLE

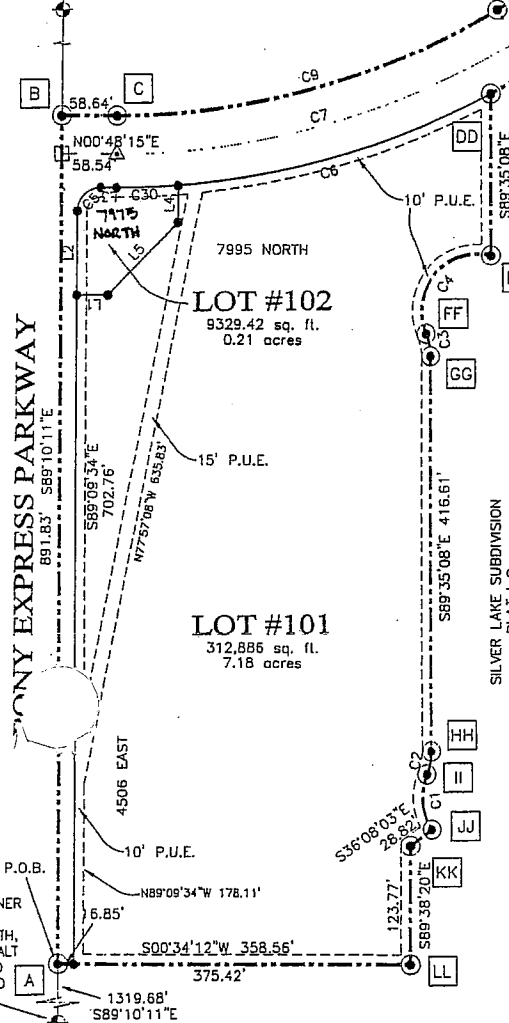
CURVE	RADIUS	DELTA	LENGTH	CHORD DIR.	CHORD
C1	60.00	57°30'31"	60.22	S85°00'28"W	57.73
C2	60.00	23°20'51"	24.45	S77°54'42"E	24.28
C3	60.00	23°16'58"	24.38	N78°48'23"E	24.21
C4	60.00	126°33'09"	132.53	N49°35'31"W	107.18
C5	25.00	89°57'49"	39.25	N44°10'39"W	35.34
C6	835.00	23°48'19"	346.93	S15°39'17"E	344.44
C7	800.00	31°59'21"	446.65	S15°11'25"E	440.87
C8	835.00	03°37'39"	52.87	S28°22'16"E	52.86
C9	760.00	31°59'21"	424.32	S15°11'25"E	418.83
C10	765.00	23°25'52"	312.85	N19°28'10"W	310.67
C11	800.00	19°10'07"	267.64	N21°36'02"W	266.40
C12	800.00	04°15'45"	59.52	N09°53'06"W	59.50
C13	840.00	23°25'52"	343.52	N19°28'10"W	341.13
C14	1000.00	20°28'34"	357.38	S17°59'29"E	355.48
C15	1035.00	46°23'35"	838.05	S30°57'00"E	815.34
C16	960.00	46°23'50"	777.39	S30°57'07"E	756.32
C17	1000.00	25°55'01"	452.34	S41°11'17"E	448.49
C18	75.00	08°55'46"	11.69	S05°28'52"E	11.68
C19	25.00	53°07'48"	23.18	N27°34'53"W	22.36
C20	25.00	59°20'16"	25.89	N19°43'23"E	24.75
C21	25.00	49°27'30"	21.58	S78°52'33"E	20.92
C22	25.00	57°58'34"	25.30	S78°23'19"W	24.24
C23	75.00	34°39'41"	45.37	S89°56'45"E	44.68
C24	75.00	31°13'18"	40.87	N87°59'39"W	40.37
C25	25.00	59°20'27"	25.89	N77°56'47"E	24.75
C26	25.00	53°07'48"	23.18	N80°42'42"W	22.36
C27	25.00	53°07'48"	23.18	S27°34'53"E	22.36
C28	25.00	57°59'24"	25.30	S19°16'52"W	24.24
C29	75.00	08°41'51"	11.38	N05°21'55"W	11.37
C30	835.00	04°33'22"	66.40	S01°28'26"E	66.38

LINE TABLE

LINE	LENGTH	BEARING
L1	33.00	N00°48'15"E
L2	89.02	S89°09'34"E
L3	16.69	N00°48'15"E
L4	39.12	S89°09'34"E
L5	107.90	S45°07'23"E

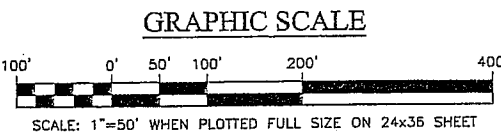


ORTH QUARTER CORNER  
SECTION 28  
1/4 SECTION 28  
H/W 5 SOUTH, RANGE 1 WEST  
LAKE BASE AND MERIDIAN  
FOUND BRASS CAP



LEGEND

- SET 5/8" REBAR W/CAP STAMPED LS #176695
- PLAT BOUNDARY
- SET 5/8" REBAR W/CAP STAMPED LS #176695
- CALCULATED POINT
- SURVEY MONUMENT



- NOTES:
- ALL WATER LINES ARE UP TO AND INCLUDING THE METER. ALL SEWER MAINS, POWER LINES, GAS LINES, AND TELEPHONE LINES UP TO AND INCLUDING THE METER ARE DEDICATED TO EAGLE MOUNTAIN CITY.
  - ALL OPEN SPACE IS PUBLIC OPEN SPACE DEDICATED TO EAGLE MOUNTAIN CITY.
  - CLEAR LINES OF VISION SHALL BE PROVIDED AT INTERSECTIONS. SEE EAGLE MOUNTAIN CITY DEVELOPMENT CODE SECTION 23.4.4.
  - NO DRIVEWAYS ARE TO ACCESS SILVER LAKE PARKWAY
  - ALL SINGLE FAMILY HOUSING TO HAVE A DRIVEWAY LENGTH OF 20 FEET MINIMUM.
  - SLOPES ON PRIVATE PROPERTY NOT TO BE ADJUSTED WITHOUT APPROVAL OF EAGLE MOUNTAIN CITY.

BOUNDARY DESCRIPTION PLAT ONE-A

A PARCEL OF LAND LOCATED IN EAGLE MOUNTAIN, UTAH COUNTY IN THE NORTH HALF OF SECTION 28, TOWNSHIP 5 SOUTH, RANGE 1 WEST, SALT LAKE BASE AND MERIDIAN, BEING MORE PARTICULARLY DESCRIBED ACCORDING TO THE FOLLOWING COURSES AND DISTANCES, TO WIT:

BEGINNING AT A POINT LOCATED S 89° 10' 11" E, 1319.68 FEET ALONG THE SECTION LINE, FROM THE NORTHWEST SECTION CORNER OF SECTION 28, TOWNSHIP 5 SOUTH, RANGE 1 WEST, SALT LAKE BASE AND MERIDIAN, AND RUNNING THENCE S 89° 10' 11" E, 891.83 FEET; THENCE S 00° 48' 15" W, 58.64 FEET TO A POINT OF CURVATURE; THENCE ALONG THE ARC OF A CURVE TO THE LEFT, HAVING A RADIUS OF 760.00 FEET, A LENGTH OF 424.32 FEET, THROUGH A CENTRAL ANGLE OF 31° 59' 21" (CHORD BEARS S 15° 11' 25" E, 418.83 FEET); THENCE S 31° 11' 07" E, 182.42 FEET TO A POINT OF CURVATURE; THENCE ALONG THE ARC OF A CURVE TO THE RIGHT, HAVING A RADIUS OF 840.00 FEET, A LENGTH OF 343.52 FEET, THROUGH A CENTRAL ANGLE OF 23° 25' 52" (CHORD BEARS S 19° 28' 10" E, 341.13 FEET); THENCE S 74° 51' 12" E, 187.49 FEET TO A POINT OF CURVATURE; THENCE ALONG THE ARC OF A CURVE TO THE LEFT, HAVING A RADIUS OF 960.00 FEET, A LENGTH OF 777.39 FEET, THROUGH A CENTRAL ANGLE OF 46° 23' 50" (CHORD BEARS S 30° 57' 00" E, 756.32 FEET); THENCE S 54° 08' 48" E, 260.63 FEET TO A POINT OF CURVATURE; THENCE ALONG THE ARC OF A CURVE TO THE LEFT, HAVING A RADIUS OF 25.00 FEET, A LENGTH OF 21.58 FEET, THROUGH A CENTRAL ANGLE OF 49° 27' 30" (CHORD BEARS S 78° 52' 33" E, 20.92 FEET) TO A POINT OF CURVATURE; THENCE ALONG THE ARC OF A CURVE TO THE RIGHT, HAVING A RADIUS OF 75.00 FEET, A LENGTH OF 40.87 FEET, THROUGH A CENTRAL ANGLE OF 31° 13' 18" (CHORD BEARS S 87° 59' 39" E, 40.37 FEET) TO A POINT OF CURVATURE; THENCE ALONG THE ARC OF A CURVE TO THE LEFT, HAVING A RADIUS OF 25.00 FEET, A LENGTH OF 25.89 FEET, THROUGH A CENTRAL ANGLE OF 59° 20' 27" (CHORD BEARS N 77° 56' 47" E, 24.75 FEET); THENCE S 40° 25' 24" E, 54.01 FEET TO A POINT OF CURVATURE; THENCE ALONG THE ARC OF A NON-TANGENT CURVE TO THE LEFT, HAVING A RADIUS OF 25.00 FEET, A LENGTH OF 25.30 FEET, THROUGH A CENTRAL ANGLE OF 57° 59' 24" (CHORD BEARS S 19° 16' 52" W, 24.24 FEET) TO A POINT OF CURVATURE; THENCE ALONG THE ARC OF A CURVE TO THE RIGHT, HAVING A RADIUS OF 75.00 FEET, A LENGTH OF 45.37 FEET, THROUGH A CENTRAL ANGLE OF 34° 39' 41" (CHORD BEARS N 89° 56' 45" E, 44.68 FEET) TO A POINT OF CURVATURE; THENCE ALONG THE ARC OF A CURVE TO THE LEFT, HAVING A RADIUS OF 25.00 FEET, A LENGTH OF 23.18 FEET, THROUGH A CENTRAL ANGLE OF 53° 07' 48" (CHORD BEARS N 80° 42' 42" W, 22.36 FEET) TO A POINT OF CURVATURE; THENCE ALONG THE ARC OF A CURVE TO THE RIGHT, HAVING A RADIUS OF 75.00 FEET, A LENGTH OF 40.87 FEET, THROUGH A CENTRAL ANGLE OF 31° 13' 18" (CHORD BEARS N 89° 56' 45" E, 44.68 FEET) TO A POINT OF CURVATURE; THENCE ALONG THE ARC OF A CURVE TO THE LEFT, HAVING A RADIUS OF 25.00 FEET, A LENGTH OF 25.89 FEET, THROUGH A CENTRAL ANGLE OF 59° 20' 27" (CHORD BEARS N 77° 56' 47" E, 24.75 FEET); THENCE S 40° 25' 24" E, 54.01 FEET TO A POINT OF CURVATURE; THENCE ALONG THE ARC OF A NON-TANGENT CURVE TO THE LEFT, HAVING A RADIUS OF 25.00 FEET, A LENGTH OF 25.30 FEET, THROUGH A CENTRAL ANGLE OF 57° 59' 24" (CHORD BEARS S 19° 16' 52" W, 24.24 FEET) TO A POINT OF CURVATURE; THENCE ALONG THE ARC OF A CURVE TO THE RIGHT, HAVING A RADIUS OF 75.00 FEET, A LENGTH OF 45.37 FEET, THROUGH A CENTRAL ANGLE OF 34° 39' 41" (CHORD BEARS N 89° 56' 45" E, 44.68 FEET) TO A POINT OF CURVATURE; THENCE ALONG THE ARC OF A CURVE TO THE LEFT, HAVING A RADIUS OF 25.00 FEET, A LENGTH OF 23.18 FEET, THROUGH A CENTRAL ANGLE OF 53° 07' 48" (CHORD BEARS N 80° 42' 42" W, 22.36 FEET) TO A POINT OF CURVATURE; THENCE ALONG THE ARC OF A CURVE TO THE RIGHT, HAVING A RADIUS OF 75.00 FEET, A LENGTH OF 40.87 FEET, THROUGH A CENTRAL ANGLE OF 31° 13' 18" (CHORD BEARS N 89° 56' 45" E, 44.68 FEET) TO A POINT OF CURVATURE; THENCE ALONG THE ARC OF A CURVE TO THE LEFT, HAVING A RADIUS OF 25.00 FEET, A LENGTH OF 25.89 FEET, THROUGH A CENTRAL ANGLE OF 59° 20' 27" (CHORD BEARS N 77° 56' 47" E, 24.75 FEET); THENCE S 40° 25' 24" E, 54.01 FEET TO A POINT OF CURVATURE; THENCE ALONG THE ARC OF A NON-TANGENT CURVE TO THE LEFT, HAVING A RADIUS OF 25.00 FEET, A LENGTH OF 25.30 FEET, THROUGH A CENTRAL ANGLE OF 57° 59' 24" (CHORD BEARS S 19° 16' 52" W, 24.24 FEET) TO A POINT OF CURVATURE; THENCE ALONG THE ARC OF A CURVE TO THE RIGHT, HAVING A RADIUS OF 75.00 FEET, A LENGTH OF 45.37 FEET, THROUGH A CENTRAL ANGLE OF 34° 39' 41" (CHORD BEARS N 89° 56' 45" E, 44.68 FEET) TO A POINT OF CURVATURE; THENCE ALONG THE ARC OF A CURVE TO THE LEFT, HAVING A RADIUS OF 25.00 FEET, A LENGTH OF 23.18 FEET, THROUGH A CENTRAL ANGLE OF 53° 07' 48" (CHORD BEARS N 80° 42' 42" W, 22.36 FEET) TO A POINT OF CURVATURE; THENCE ALONG THE ARC OF A CURVE TO THE RIGHT, HAVING A RADIUS OF 75.00 FEET, A LENGTH OF 40.87 FEET, THROUGH A CENTRAL ANGLE OF 31° 13' 18" (CHORD BEARS N 89° 56' 45" E, 44.68 FEET) TO A POINT OF CURVATURE; THENCE ALONG THE ARC OF A CURVE TO THE LEFT, HAVING A RADIUS OF 25.00 FEET, A LENGTH OF 25.89 FEET, THROUGH A CENTRAL ANGLE OF 59° 20' 27" (CHORD BEARS N 77° 56' 47" E, 24.75 FEET); THENCE S 40° 25' 24" E, 54.01 FEET TO A POINT OF CURVATURE; THENCE ALONG THE ARC OF A NON-TANGENT CURVE TO THE LEFT, HAVING A RADIUS OF 25.00 FEET, A LENGTH OF 25.30 FEET, THROUGH A CENTRAL ANGLE OF 57° 59' 24" (CHORD BEARS S 19° 16' 52" W, 24.24 FEET) TO A POINT OF CURVATURE; THENCE ALONG THE ARC OF A CURVE TO THE RIGHT, HAVING A RADIUS OF 75.00 FEET, A LENGTH OF 45.37 FEET, THROUGH A CENTRAL ANGLE OF 34° 39' 41" (CHORD BEARS N 89° 56' 45" E, 44.68 FEET) TO A POINT OF CURVATURE; THENCE ALONG THE ARC OF A CURVE TO THE LEFT, HAVING A RADIUS OF 25.00 FEET, A LENGTH OF 23.18 FEET, THROUGH A CENTRAL ANGLE OF 53° 07' 48" (CHORD BEARS N 80° 42' 42" W, 22.36 FEET) TO A POINT OF CURVATURE; THENCE ALONG THE ARC OF A CURVE TO THE RIGHT, HAVING A RADIUS OF 75.00 FEET, A LENGTH OF 40.87 FEET, THROUGH A CENTRAL ANGLE OF 31° 13' 18" (CHORD BEARS N 89° 56' 45" E, 44.68 FEET) TO A POINT OF CURVATURE; THENCE ALONG THE ARC OF A CURVE TO THE LEFT, HAVING A RADIUS OF 25.00 FEET, A LENGTH OF 25.89 FEET, THROUGH A CENTRAL ANGLE OF 59° 20' 27" (CHORD BEARS N 77° 56' 47" E, 24.75 FEET); THENCE S 40° 25' 24" E, 54.01 FEET TO A POINT OF CURVATURE; THENCE ALONG THE ARC OF A NON-TANGENT CURVE TO THE LEFT, HAVING A RADIUS OF 25.00 FEET, A LENGTH OF 25.30 FEET, THROUGH A CENTRAL ANGLE OF 57° 59' 24" (CHORD BEARS S 19° 16' 52" W, 24.24 FEET) TO A POINT OF CURVATURE; THENCE ALONG THE ARC OF A CURVE TO THE RIGHT, HAVING A RADIUS OF 75.00 FEET, A LENGTH OF 45.37 FEET, THROUGH A CENTRAL ANGLE OF 34° 39' 41" (CHORD BEARS N 89° 56' 45" E, 44.68 FEET) TO A POINT OF CURVATURE; THENCE ALONG THE ARC OF A CURVE TO THE LEFT, HAVING A RADIUS OF 25.00 FEET, A LENGTH OF 23.18 FEET, THROUGH A CENTRAL ANGLE OF 53° 07' 48" (CHORD BEARS N 80° 42' 42" W, 22.36 FEET) TO A POINT OF CURVATURE; THENCE ALONG THE ARC OF A CURVE TO THE RIGHT, HAVING A RADIUS OF 75.00 FEET, A LENGTH OF 40.87 FEET, THROUGH A CENTRAL ANGLE OF 31° 13' 18" (CHORD BEARS N 89° 56' 45" E, 44.68 FEET) TO A POINT OF CURVATURE; THENCE ALONG THE ARC OF A CURVE TO THE LEFT, HAVING A RADIUS OF 25.00 FEET, A LENGTH OF 25.89 FEET, THROUGH A CENTRAL ANGLE OF 59° 20' 27" (CHORD BEARS N 77° 56' 47" E, 24.75 FEET); THENCE S 40° 25' 24" E, 54.01 FEET TO A POINT OF CURVATURE; THENCE ALONG THE ARC OF A NON-TANGENT CURVE TO THE LEFT, HAVING A RADIUS OF 25.00 FEET, A LENGTH OF 25.30 FEET, THROUGH A CENTRAL ANGLE OF 57° 59' 24" (CHORD BEARS S 19° 16' 52" W, 24.24 FEET) TO A POINT OF CURVATURE; THENCE ALONG THE ARC OF A CURVE TO THE RIGHT, HAVING A RADIUS OF 75.00 FEET, A LENGTH OF 45.37 FEET, THROUGH A CENTRAL ANGLE OF 34° 39' 41" (CHORD BEARS N 89° 56' 45" E, 44.68 FEET) TO A POINT OF CURVATURE; THENCE ALONG THE ARC OF A CURVE TO THE LEFT, HAVING A RADIUS OF 25.00 FEET, A LENGTH OF 23.18 FEET, THROUGH A CENTRAL ANGLE OF 53° 07' 48" (CHORD BEARS N 80° 42' 42" W, 22.36 FEET) TO A POINT OF CURVATURE; THENCE ALONG THE ARC OF A CURVE TO THE RIGHT, HAVING A RADIUS OF 75.00 FEET, A LENGTH OF 40.87 FEET, THROUGH A CENTRAL ANGLE OF 31° 13' 18" (CHORD BEARS N 89° 56' 45" E, 44.68 FEET) TO A POINT OF CURVATURE; THENCE ALONG THE ARC OF A CURVE TO THE LEFT, HAVING A RADIUS OF 25.00 FEET, A LENGTH OF 25.89 FEET, THROUGH A CENTRAL ANGLE OF 59° 20' 27" (CHORD BEARS N 77° 56' 47" E, 24.75 FEET); THENCE S 40° 25' 24" E, 54.01 FEET TO A POINT OF CURVATURE; THENCE ALONG THE ARC OF A NON-TANGENT CURVE TO THE LEFT, HAVING A RADIUS OF 25.00 FEET, A LENGTH OF 25.30 FEET, THROUGH A CENTRAL ANGLE OF 57° 59' 24" (CHORD BEARS S 19° 16' 52" W, 24.24 FEET) TO A POINT OF CURVATURE; THENCE ALONG THE ARC OF A CURVE TO THE RIGHT, HAVING A RADIUS OF 75.00 FEET, A LENGTH OF 45.37 FEET, THROUGH A CENTRAL ANGLE OF 34° 39' 41" (CHORD BEARS N 89° 56' 45" E, 44.68 FEET) TO A POINT OF CURVATURE; THENCE ALONG THE ARC OF A CURVE TO THE LEFT, HAVING A RADIUS OF 25.00 FEET, A LENGTH OF 23.18 FEET, THROUGH A CENTRAL ANGLE OF 53° 07' 48" (CHORD BEARS N 80° 42' 42" W, 22.36 FEET) TO A POINT OF CURVATURE; THENCE ALONG THE ARC OF A CURVE TO THE RIGHT, HAVING A RADIUS OF 75.00 FEET, A LENGTH OF 40.87 FEET, THROUGH A CENTRAL ANGLE OF 31° 13' 18" (CHORD BEARS N 89° 56' 45" E, 44.68 FEET) TO A POINT OF CURVATURE; THENCE ALONG THE ARC OF A CURVE TO THE LEFT, HAVING A RADIUS OF 25.00 FEET, A LENGTH OF 25.89 FEET, THROUGH A CENTRAL ANGLE OF 59° 20' 27" (CHORD BEARS N 77° 56' 47" E, 24.75 FEET); THENCE S 40° 25' 24" E, 54.01 FEET TO A POINT OF CURVATURE; THENCE ALONG THE ARC OF A NON-TANGENT CURVE TO THE LEFT, HAVING A RADIUS OF 25.00 FEET, A LENGTH OF 25.30 FEET, THROUGH A CENTRAL ANGLE OF 57° 59' 24" (CHORD BEARS S 19° 16' 52" W, 24.24 FEET) TO A POINT OF CURVATURE; THENCE ALONG THE ARC OF A CURVE TO THE RIGHT, HAVING A RADIUS OF 75.00 FEET, A LENGTH OF 45.37 FEET, THROUGH A CENTRAL ANGLE OF 34° 39' 41" (CHORD BEARS N 89° 56' 45" E, 44.68 FEET) TO A POINT OF CURVATURE; THENCE ALONG THE ARC OF A CURVE TO THE LEFT, HAVING A RADIUS OF 25.00 FEET, A LENGTH OF 23.18 FEET, THROUGH A CENTRAL ANGLE OF 53° 07' 48" (CHORD BEARS N 80° 42' 42" W, 22.36 FEET) TO A POINT OF CURVATURE; THENCE ALONG THE ARC OF A CURVE TO THE RIGHT, HAVING A RADIUS OF 75.00 FEET, A LENGTH OF 40.87 FEET, THROUGH A CENTRAL ANGLE OF 31° 13' 18" (CHORD BEARS N 89° 56' 45" E, 44.68 FEET) TO A POINT OF CURVATURE; THENCE ALONG THE ARC OF A CURVE TO THE LEFT, HAVING A RADIUS OF 25.00 FEET, A LENGTH OF 25.89 FEET, THROUGH A CENTRAL ANGLE OF 59° 20' 27" (CHORD BEARS N 77° 56' 47" E, 24.75 FEET); THENCE S 40° 25' 24" E, 54.01 FEET TO A POINT OF CURVATURE; THENCE ALONG THE ARC OF A NON-TANGENT CURVE TO THE LEFT, HAVING A RADIUS OF 25.00 FEET, A LENGTH OF 25.30 FEET, THROUGH A CENTRAL ANGLE OF 57° 59' 24" (CHORD BEARS S 19° 16' 52" W, 24.24 FEET) TO A POINT OF CURVATURE; THENCE ALONG THE ARC OF A CURVE TO THE RIGHT, HAVING A RADIUS OF 75.00 FEET, A LENGTH OF 45.37 FEET, THROUGH A CENTRAL ANGLE OF 34° 39' 41" (CHORD BEARS N 89° 56' 45" E, 44.68 FEET) TO A POINT OF CURVATURE; THENCE ALONG THE ARC OF A CURVE TO THE LEFT, HAVING A RADIUS OF 25.00 FEET, A LENGTH OF 23.18 FEET, THROUGH A CENTRAL ANGLE OF 53° 07' 48" (CHORD BEARS N 80° 42' 42" W, 22.36 FEET) TO A POINT OF CURVATURE; THENCE ALONG THE ARC OF A CURVE TO THE RIGHT, HAVING A RADIUS OF 75.00 FEET, A LENGTH OF 40.87 FEET, THROUGH A CENTRAL ANGLE OF 31° 13' 18" (CHORD BEARS N 89° 56' 45" E, 44.68 FEET) TO A POINT OF CURVATURE; THENCE ALONG THE ARC OF A CURVE TO THE LEFT, HAVING A RADIUS OF 25.00 FEET, A LENGTH OF 25.89 FEET, THROUGH A CENTRAL ANGLE OF 59° 20' 27" (CHORD BEARS N 77° 56' 47" E, 24.75 FEET); THENCE S 40° 25' 24" E, 54.01 FEET TO A POINT OF CURVATURE; THENCE ALONG THE ARC OF A NON-TANGENT CURVE TO THE LEFT, HAVING A RADIUS OF 25.00 FEET, A LENGTH OF 25.30 FEET, THROUGH A CENTRAL ANGLE OF 57° 59' 24" (CHORD BEARS S 19° 16' 52" W, 24.24 FEET) TO A POINT OF CURVATURE; THENCE ALONG THE ARC OF A CURVE TO THE RIGHT, HAVING A RADIUS OF 75.00 FEET, A LENGTH OF 45.37 FEET, THROUGH A CENTRAL ANGLE OF 34° 39' 41" (CHORD BEARS N 89° 56' 45" E, 44.68 FEET) TO A POINT OF CURVATURE; THENCE ALONG THE ARC OF A CURVE TO THE LEFT, HAVING A RADIUS OF 25.00 FEET, A LENGTH OF 23.18 FEET, THROUGH A CENTRAL ANGLE OF 53° 07' 48" (CHORD BEARS N 80° 42' 42" W, 22.36 FEET) TO A POINT OF CURVATURE; THENCE ALONG THE ARC OF A CURVE TO THE RIGHT, HAVING A RADIUS OF 75.00 FEET, A LENGTH OF 40.87 FEET, THROUGH A CENTRAL ANGLE OF 31° 13' 18" (CHORD BEARS N 89° 56' 45" E, 44.68 FEET) TO A POINT OF CURVATURE; THENCE ALONG THE ARC OF A CURVE TO THE LEFT, HAVING A RADIUS OF 25.00 FEET, A LENGTH OF 25.89 FEET, THROUGH A CENTRAL ANGLE OF 59° 20' 27" (CHORD BEARS N 77° 56' 47" E, 24.75 FEET); THENCE S 40° 25' 24" E, 54.01 FEET TO A POINT OF CURVATURE; THENCE ALONG THE ARC OF A NON-TANGENT CURVE TO THE LEFT, HAVING A RADIUS OF 25.00 FEET, A LENGTH OF 25.30 FEET, THROUGH A CENTRAL ANGLE OF 57° 59' 24" (CHORD BEARS S 19° 16' 52" W, 24.24 FEET) TO A POINT OF CURVATURE; THENCE ALONG THE ARC OF A CURVE TO THE RIGHT, HAVING A RADIUS OF 75.00 FEET, A LENGTH OF 45.37 FEET, THROUGH A CENTRAL ANGLE OF 34° 39' 41" (CHORD BEARS N 89° 56' 45" E, 44.68 FEET) TO A POINT OF CURVATURE; THENCE ALONG THE ARC OF A CURVE TO THE LEFT, HAVING A RADIUS OF 25.00 FEET, A LENGTH OF 23.18 FEET, THROUGH A CENTRAL ANGLE OF 53° 07' 48" (CHORD BEARS N 80° 42' 42" W, 22.36 FEET) TO A POINT OF CURVATURE; THENCE ALONG THE ARC OF A CURVE TO THE RIGHT, HAVING A RADIUS OF 75.00 FEET, A LENGTH OF 40.87 FEET, THROUGH A CENTRAL ANGLE OF 31° 13' 18" (CHORD BEARS N 89° 56' 45" E, 44.68 FEET) TO A POINT OF CURVATURE; THENCE ALONG THE ARC OF A CURVE TO THE LEFT, HAVING A RADIUS OF 25.00 FEET, A LENGTH OF 25.89 FEET, THROUGH A CENTRAL ANGLE OF 59° 20' 27" (CHORD BEARS N 77° 56' 47" E, 24.75 FEET); THENCE S 40° 25' 24" E, 54.01 FEET TO A POINT OF CURVATURE; THENCE ALONG THE ARC OF A NON-TANGENT CURVE TO THE LEFT, HAVING A RADIUS OF 25.00 FEET, A LENGTH OF 25.30 FEET, THROUGH A CENTRAL ANGLE OF 57° 59' 24" (CHORD BEARS S 19° 16' 52" W, 24.24 FEET) TO A POINT OF CURVATURE; THENCE ALONG THE ARC OF A CURVE TO THE RIGHT, HAVING A RADIUS OF 75.00 FEET, A LENGTH OF 45.37 FEET, THROUGH A CENTRAL ANGLE OF 34° 39' 41" (CHORD BEARS N 89° 56' 45" E, 44.68 FEET) TO A POINT OF CURVATURE; THENCE ALONG THE ARC OF A CURVE TO THE LEFT, HAVING A RADIUS OF 25.00 FEET, A LENGTH OF 23.18 FEET, THROUGH A CENTRAL ANGLE OF 53° 07' 48" (CHORD BEARS N 80° 42' 42" W, 22.36 FEET) TO A POINT OF CURVATURE; THENCE ALONG THE ARC OF A CURVE TO THE RIGHT, HAVING A RADIUS OF 75.00 FEET, A LENGTH OF 40.87 FEET, THROUGH A CENTRAL ANGLE OF 31° 13' 18" (CHORD BEARS N 89° 56' 45" E, 44.68 FEET) TO A POINT OF CURVATURE; THENCE ALONG THE ARC OF A CURVE TO THE LEFT, HAVING A RADIUS OF 25.00 FEET, A LENGTH OF 25.89 FEET, THROUGH A CENTRAL ANGLE OF 59° 20' 27" (CHORD BEARS N 77° 56' 47" E, 24.75 FEET); THENCE S 40° 25' 24" E, 54.01 FEET TO A POINT OF CURVATURE; THENCE ALONG THE ARC OF A NON-TANGENT CURVE TO THE LEFT, HAVING A RADIUS OF 25.00 FEET, A LENGTH OF 25.30 FEET, THROUGH A CENTRAL ANGLE OF 57° 59' 24" (CHORD BEARS S 19° 16' 52" W, 24.24 FEET) TO A POINT OF CURVATURE; THENCE ALONG THE ARC OF A CURVE TO THE RIGHT, HAVING A RADIUS OF 75.00 FEET, A LENGTH OF 45.37 FEET, THROUGH A CENTRAL ANGLE OF 34° 39' 41" (CHORD BEARS N 89° 56' 45" E, 44.68 FEET) TO A POINT OF CURVATURE; THENCE ALONG THE ARC OF A CURVE TO THE LEFT, HAVING A RADIUS OF 25.00 FEET, A LENGTH OF 23.18 FEET, THROUGH A CENTRAL ANGLE OF 53° 07' 48" (CHORD BEARS N 80° 42' 42" W, 22.36 FEET) TO A POINT OF CURVATURE; THENCE ALONG THE ARC OF A CURVE TO THE RIGHT, HAVING A RADIUS OF 75.00 FEET, A LENGTH OF 40.87 FEET,