

EST CORNER
P 5 SOUTH,
N 177.02

SECTION 29,
TOWNSHIP-5 WEST,
RANGE 1 WEST,
SALT LAKE BASE &
MERIDIAN

Scale 1" = 40'

COORDINATES

Table with columns: NORTHING, EASTING, and numerical data points for various points on the plat.

CURVE TABLE

Table with columns: CHORD BEARING, CHORD LENGTH, ARC LENGTH, DELTA ANGLE, and numerical data for curves C201 through C299.

Table with columns: NUMBER, RADIUS, DELTA ANGLE, ARC LENGTH, CHORD LENGTH, CHORD BEARING, and numerical data for curves C201 through C299.

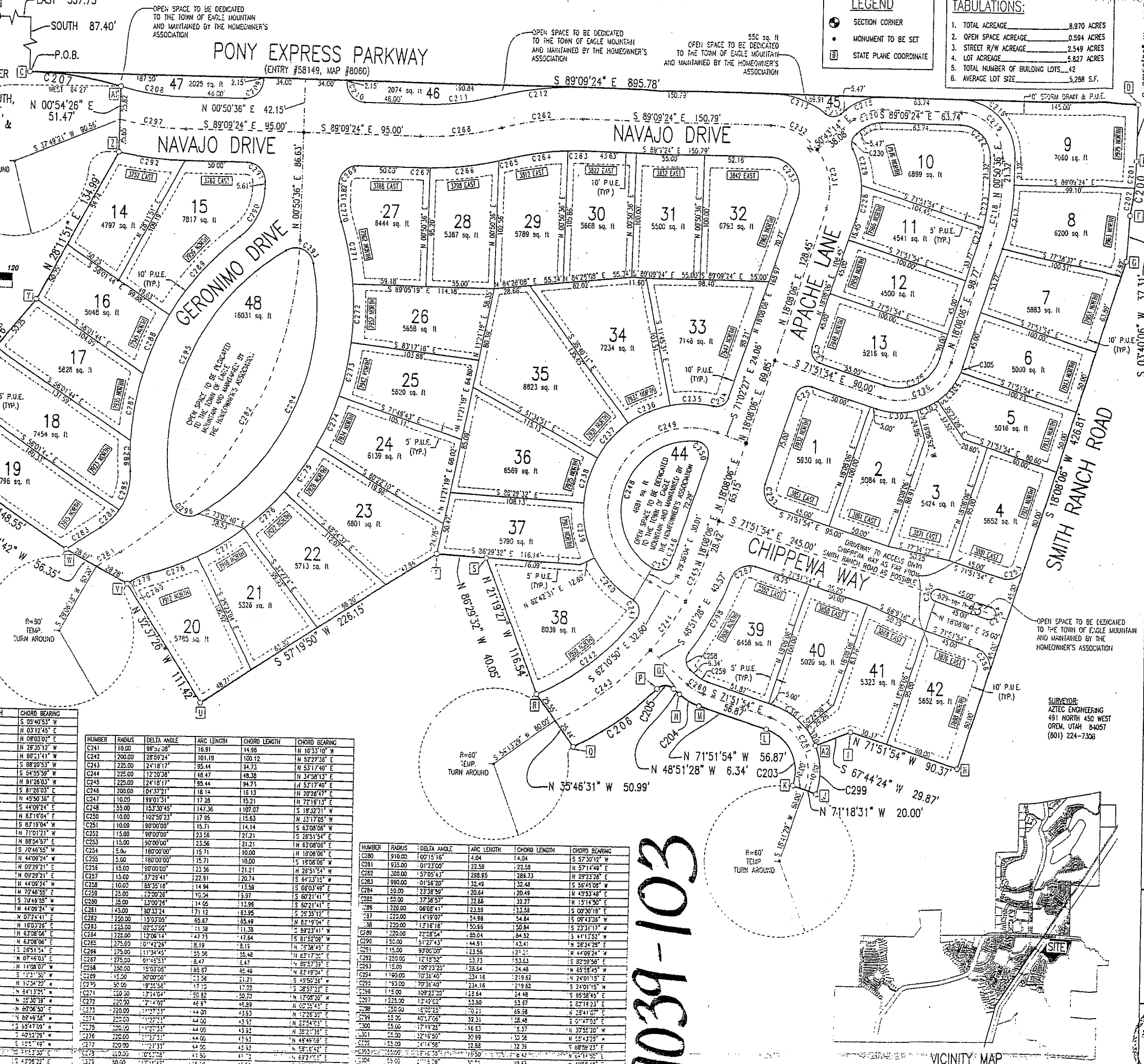


Table with columns: NUMBER, RADIUS, DELTA ANGLE, ARC LENGTH, CHORD LENGTH, CHORD BEARING, and numerical data for curves C201 through C299.

Legal text and forms including: SURVEYOR'S CERTIFICATE (David V. Thomas), BOUNDARY DESCRIPTION, EAGLE MOUNTAIN DEVELOPER PLAT DEDICATION, ACKNOWLEDGMENT, ACCEPTANCE BY LEGISLATIVE BODY, PLANNING COMMISSION APPROVAL, and a vicinity map.

1039-103

RUSH VALLEY SUBDIVISION, TOWN OF EAGLE MOUNTAIN, UTAH COUNTY, UTAH. Includes seal of David V. Thomas, Surveyor, and other official seals.