

RESOLUTION NO. R- 20-2018

**A RESOLUTION CHANGING THE NAME OF
SAGO PALM DRIVE TO AVIATOR AVENUE**

PREAMBLE

WHEREAS, the City Council of Eagle Mountain City, Utah, finds that it is in the public interest to change the name of Sago Palm Drive to Aviator Avenue to avoid public confusion and to provide for efficient public safety services, and

WHEREAS, the City Council finds that all required public notices have been provided and that a public hearing has been held as required by law prior to the proposed amendment of the subdivision plat.

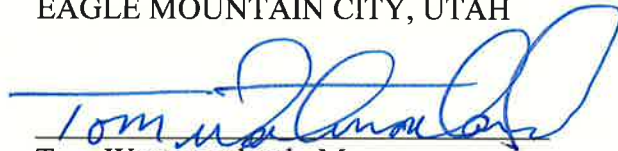
NOW, THEREFORE, BE IT RESOLVED by the City Council of Eagle Mountain City, Utah, as follows:

The subdivision plat of Sage Park Phase A Plat 1 (Utah County Entry Number: 80636:2017) is hereby amended to change the name of the street designated on the plat as Sago Palm Drive to Aviator Avenue and record such in the records of Utah County.


This Resolution shall take effect upon its first posting or publication.

ADOPTED by the City Council of Eagle Mountain City, Utah, this 20th day of November, 2018.

EAGLE MOUNTAIN CITY, UTAH


Tom Westmoreland, Mayor

ATTEST:


Fionnuala B. Kofoed, MMC
City Recorder



CERTIFICATION

The above Resolution was adopted by the City Council of Eagle Mountain City, Utah on this 20th day of November, 2018.

Those voting aye:

Donna Burnham

Melissa Clark

Colby Curtis

Stephanie Gricius

Benjamin Reaves

Those voting nay:

Donna Burnham

Melissa Clark

Colby Curtis

Stephanie Gricius

Benjamin Reaves

Those excused:

Donna Burnham

Melissa Clark

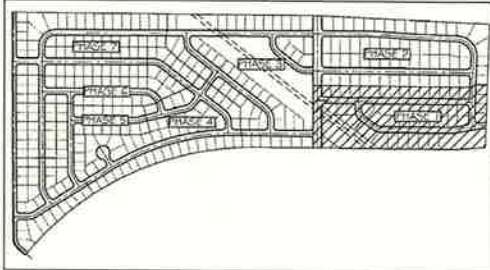
Colby Curtis

Stephanie Gricius

Benjamin Reaves



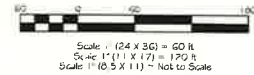
Fionnuala B. Kofoed, MMC
City Recorder



SAGE PARK PHASE A PLAT 1

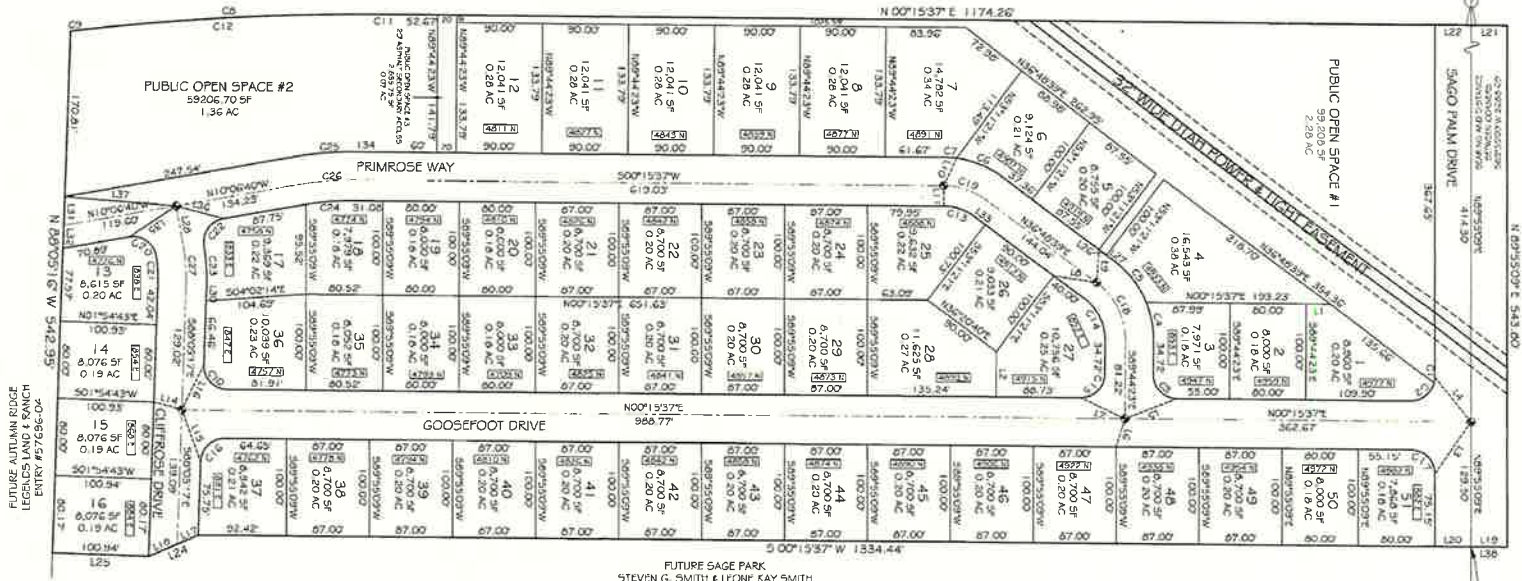
EAGLE MOUNTAIN, UTAH S 11, T6S, R2W, 5LB#M

**THERE IS AN 8' STRIP OF LAND BETWEEN EAGLE MOUNTAIN BOULEVARD AND LOTS 7-12 THAT IS DEDICATED PUBLIC OPEN SPACE. IT IS PART OF THE P.O.S.#1 AREA AND MAY BE USED BY EAGLE MOUNTAIN CITY TO INSTALL A TRAIL ALONG EAGLE MOUNTAIN BOULEVARD.



NORTH QUARTER CORNER
 SEC. 11, T6S, R2W 5LB#M
 BRASS CAP

EAGLE MOUNTAIN BOULEVARD
 ENTRY #45568-2000
 ENTRY # 7292-95



FUTURE SAGE PARK
 STEVEN G. SMITH & LEONE KAY SMITH
 ENTRY # 20182 BOOK 2612 PAGE 460

NE CORNER SEC. 11
 T6S, R2W, 5LB#M
 BRASS CAP

15670
 SHEET 2 of 2



McM ENGINEERING, INC.
 CIVIL & STRUCTURAL / LAND SURVEYING

PROJECT:	SAGE PARK PHASE A PLAT 1 EAGLE MNT, UTAH S11, T6S, R2W, 5LB#M	SHEET TITLE:	FINAL PLAT MAP	SHEET NO.:	2
DATE:	10/1/2018	BY:	JST	CHECKED BY:	JST
APPROVED BY:	STEVEN G. SMITH	DATE:	10/1/2018	BY:	JST