

LINE TABLE		
LINE	LENGTH	BEARING
T1	7.07	N89°22'40"W
T2	7.07	N89°22'40"W
T3	7.07	N89°22'40"W
T4	12.08	N89°22'40"W
T5	31.07	N45°37'24"E
T6	15.00	N89°22'32"E
T7	14.14	N89°22'40"W
T8	19.15	N89°22'40"W

CURVE TABLE					
CURVE	LENGTH	RADIUS	CHORD	BEARING	DELTA
C1	23.56	15.00	21.21	N45°37'20"E	90°0'0"
C2	23.56	15.00	21.21	N44°22'40"W	90°0'0"
C3	23.56	15.00	21.21	N45°37'20"E	90°0'0"
C4	78.54	50.00	70.71	S44°22'38"E	90°0'8"
C5	15.14	10.00	13.74	N46°00'01"E	86°45'18"
C6	65.11	43.00	59.07	S46°00'01"E	86°45'18"
C7	65.11	43.00	59.07	N47°14'41"W	86°45'18"
C8	15.14	10.00	13.74	S47°14'41"W	86°45'18"
C9	15.14	10.00	13.74	N46°00'01"E	86°45'18"
C10	65.11	43.00	59.07	S46°00'01"E	86°45'18"
C11	46.43	43.00	44.21	N59°41'27"E	61°51'47"
C12	15.14	10.00	13.74	S47°14'41"W	86°45'18"
C13	23.56	15.00	21.21	N44°22'36"W	90°0'8"
C14	58.91	75.00	57.40	N21°52'34"W	45°0'4"
C15	48.88	75.00	48.02	N67°02'48"W	37°20'27"
C16	10.03	75.00	10.02	N85°32'51"W	7°39'37"
C17	38.27	25.00	35.38	N44°22'36"W	90°0'8"
C18	33.92	17.00	28.57	S32°13'12"E	114°18'57"
C19	33.92	17.00	28.57	N32°13'12"E	114°18'57"
C20	33.92	17.00	28.57	S32°13'12"E	114°18'57"
C21	33.92	17.00	28.57	N32°13'12"E	114°18'57"
C22	18.68	43.00	18.53	N18°18'47"E	24°53'31"
C23	97.49	31.25	82.50	S89°22'32"E	178°45'04"
C24	174.37	55.00	110.00	S89°22'32"E	181°37'47"

SURVEYOR'S CERTIFICATE
 I, DAVID V. THOMAS, DO HEREBY CERTIFY THAT I AM A REGISTERED LAND SURVEYOR, AND THAT I HOLD CERTIFICATE NO. 163947 AS PRESCRIBED UNDER THE LAWS OF THE STATE OF UTAH. I FURTHER CERTIFY BY AUTHORITY OF THE OWNERS, I HAVE MADE A SURVEY OF THE TRACT OF LAND SHOWN ON THIS PLAT AND DESCRIBED BELOW, AND HAVE SUBDIVIDED SAID TRACT OF LAND INTO LOTS, BLOCKS, STREETS, PUBLIC OPEN SPACE, AND EASEMENTS AND THE SAME HAS BEEN CORRECTLY SURVEYED AND STAKED ON THE GROUND AS SHOWN ON THIS PLAT AND THAT THIS PLAT IS TRUE AND CORRECT.
 DATE JUNE 8 2000 SURVEYOR (SEE SEAL BELOW)

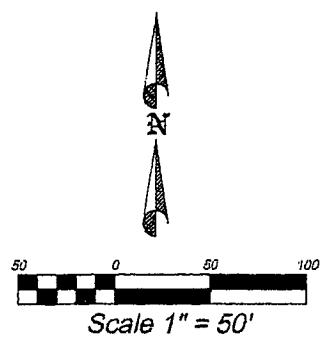
BOUNDARY DESCRIPTION

BEGINNING AT A POINT LOCATED SOUTH 1622.55 FEET AND EAST 2102.13 FEET FROM THE NORTH QUARTER CORNER OF SECTION 29, TOWNSHIP 5 SOUTH, RANGE 1 WEST, SALT LAKE BASE & MERIDIAN;

RUNNING THENCE S 89°22'40" E 520.01 FEET; THENCE S 00°37'28" W 345.01 FEET; THENCE N 89°22'32" W 270.00 FEET; THENCE S 00°37'20" W 25.00 FEET; THENCE N 89°22'40" W 265.00 FEET; THENCE N 00°37'20" E 75.00 FEET; THENCE ALONG THE ARC OF A 15.00 FOOT RADIUS CURVE TO THE RIGHT 23.56 FEET (CURVE HAS A CENTRAL ANGLE OF 90°00'00" AND A CHORD BEARING N 45°37'20" E 21.21 FEET); THENCE NORTH 00°37'20" E 50.00 FEET; THENCE ALONG THE ARC OF A 15.00 FOOT RADIUS CURVE TO THE RIGHT 23.56 FEET (CURVE HAS A CENTRAL ANGLE OF 90°00'00" AND A CHORD BEARING N 44°22'40" W 21.21 FEET); THENCE N 00°37'20" E 200.00 FEET; THENCE ALONG THE ARC OF A 15.00 FOOT RADIUS CURVE TO THE RIGHT 23.56 FEET (CURVE HAS A CENTRAL ANGLE OF 90°00'00" AND A CHORD BEARING N 45°37'20" E 21.21 FEET) TO THE POINT OF BEGINNING.

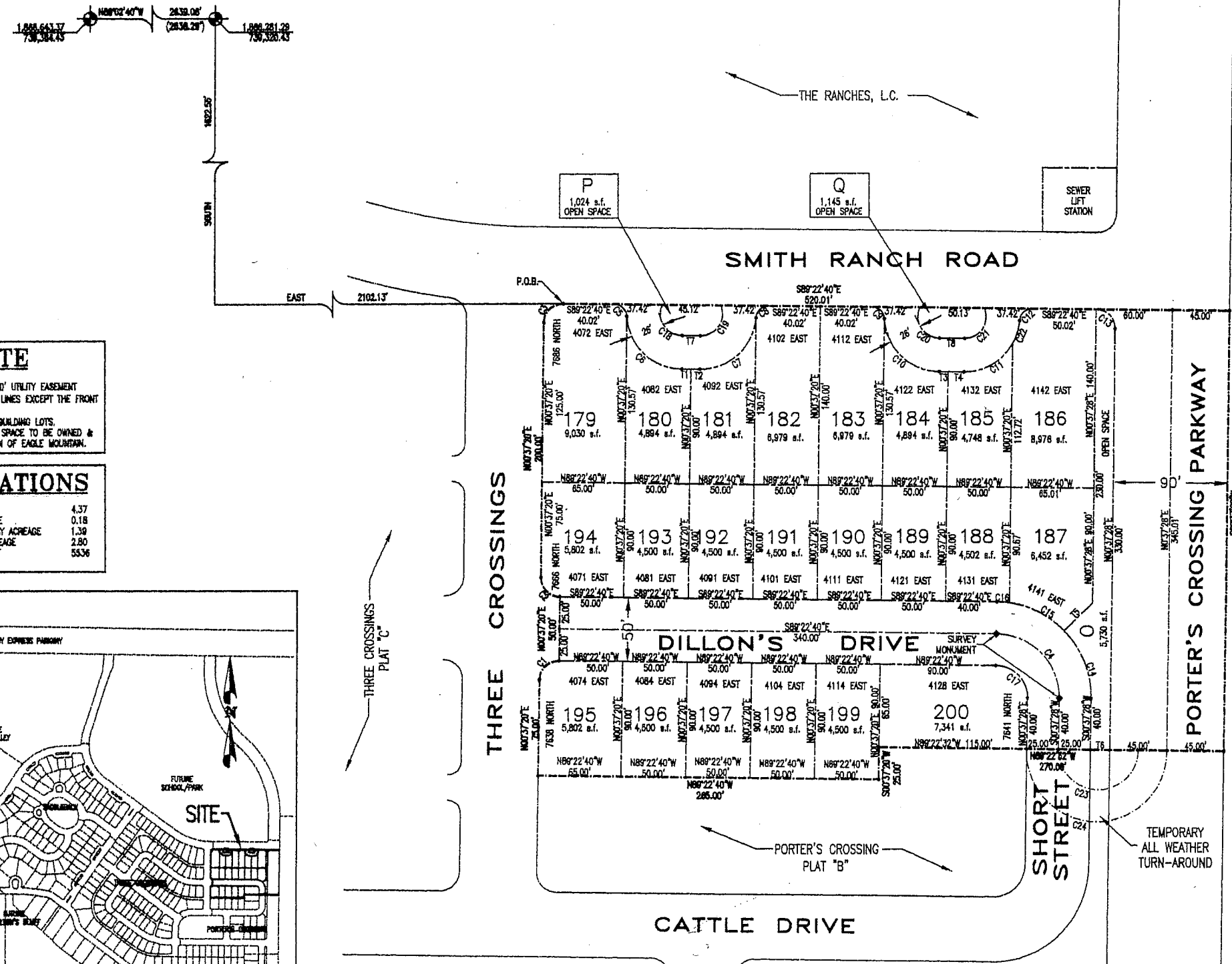
A PARCEL CONTAINING 4.37 ACRES.

PLAT 8621-99
 RANDALL COUNTY, TEXAS
 2000 JUN 08 2:36 PM FEE \$5.00 BY SS
 RECORDED FOR TOWN OF EAGLE MOUNTAIN



NORTHWEST CORNER SECTION 29
 TOWNSHIP 5 SOUTH, RANGE 1 WEST
 SALT LAKE BASE AND MERIDIAN

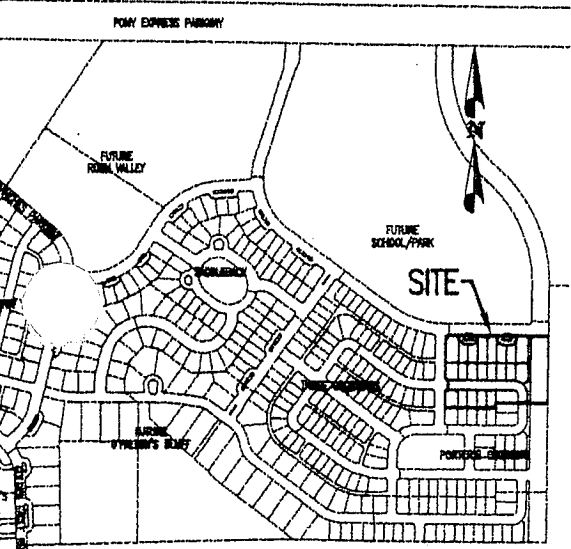
NORTH 1/4 CORNER SECTION 29
 TOWNSHIP 5 SOUTH, RANGE 1 WEST
 SALT LAKE BASE AND MERIDIAN



NOTE
 ALL LOTS HAVE A 5.00' UTILITY EASEMENT (U.E.) ALONG ALL LOT LINES EXCEPT THE FRONT WHICH IS 10.00'.
 LOTS 0-3 ARE NOT BUILDING LOTS. THEY ARE PUBLIC OPEN SPACE TO BE OWNED & MAINTAINED BY THE TOWN OF EAGLE MOUNTAIN.

TABULATIONS

TOTAL ACREAGE	4.37
OPEN SPACE ACREAGE	0.18
STREET RIGHT-OF-WAY ACREAGE	1.39
RESIDENTIAL LOT ACREAGE	2.80
AVERAGE LOT SIZE SF	5536



VICINITY PLAN
 SCALE: 1" = 50'

SURVEYOR
 DAVID V. THOMAS
 481 NORTH 450 WEST
 OREM, UTAH 84057
 (801) 224-7308

8621-99

EAGLE MOUNTAIN DEVELOPER PLAT DEDICATION

WE, THE UNDERSIGNED OWNERS OF ALL THE REAL PROPERTY DEPICTED ON THIS PLAT AND DESCRIBED IN THE SURVEYOR'S CERTIFICATE ON THIS PLAT, HAVE CAUSED THE LAND DESCRIBED ON THE PLAT TO BE DIVIDED INTO LOTS, STREETS, OPEN SPACE, EASEMENTS AND OTHER PUBLIC USES AS DESIGNATED ON THIS PLAT AND NOW DO HEREBY DEDICATE UNDER THE PROVISIONS OF 10-9-807 UTAH CODE, WITHOUT CONDITION, RESTRICTION OR RESERVATION TO THE TOWN OF EAGLE MOUNTAIN, UTAH, ALL STREETS, WATER, SEWER AND OTHER UTILITY IMPROVEMENTS, OPEN SPACES SHOWN AS PUBLIC OPEN SPACES, PARKS, EASEMENTS AND ALL OTHER PLACES OF PUBLIC IMPROVEMENTS REQUIRED BY THE DEVELOPMENT AGREEMENT BETWEEN THE UNDERSIGNED AND THE TOWN OF EAGLE MOUNTAIN FOR THE BENEFIT OF THE TOWN AND THE INHABITANTS THEREOF.
 IN WITNESS WHEREOF WE HAVE HERETO SET OUR HANDS THIS 8TH DAY OF JUNE, A.D. 2000
David V. Thomas President

ACKNOWLEDGMENT

STATE OF UTAH }
 COUNTY OF UTAH } S.S.
 ON THE 8TH DAY OF JUNE, A.D. 2000, PERSONALLY APPEARED BEFORE ME THE PERSONS SIGNING THE FOREGOING OWNERS DEDICATION KNOWN TO ME TO BE AUTHORIZED TO EXECUTE THE FOREGOING OWNERS DEDICATION FOR AND ON BEHALF OF THE OWNERS WHO DULY ACKNOWLEDGED TO ME THAT THE OWNERS DEDICATION WAS EXECUTED BY THEM ON BEHALF OF THE OWNERS.
 MY COMMISSION EXPIRES Sept. 20, 2003 Jean Kay Schabach Notary Public

ACCEPTANCE BY LEGISLATIVE BODY

THE TOWN COUNCIL OF EAGLE MOUNTAIN TOWN COUNTY OF UTAH, APPROVES THIS SUBDIVISION AND HEREBY ACCEPTS THE DEDICATION OF ALL STREETS, EASEMENTS, AND OTHER PARCELS OF LAND INTENDED FOR PUBLIC PURPOSES FOR THE PERPETUAL USE OF THE PUBLIC THIS 30th DAY OF JUNE, A.D. 2000.
David V. Thomas Mayor
 APPROVED David V. Thomas ATTEST Jean Kay Schabach
 CITY ENGINEER (SEE SEAL BELOW) CLERK-RECORDER (SEE SEAL BELOW)

PLANNING COMMISSION APPROVAL

APPROVED THIS 21st DAY OF JUNE, A.D. 2000, BY THE EAGLE MOUNTAIN TOWN PLANNING COMMISSION
David V. Thomas DIRECTOR - SECRETARY William C. Schabach CHAIRMAN, PLANNING COMMISSION

PLAT "A"
PORTER'S CROSSING
 LOCATED IN THE NORTHEAST 1/4 OF SECTION 29, T5S, R1W, S18&M
 SUBDIVISION EAGLE MOUNTAIN TOWN, UTAH COUNTY, STATE OF UTAH
 SCALE: 1" = 50 FEET

PorterPlatA 08 JUN 2000
 APPROVAL AS TO FORM
 APPROVED AS TO FORM THIS 20 DAY OF JUNE, A.D. 2000

SEAL OF SURVEYOR: DAVID V. THOMAS, No. 163947, UTAH COUNTY, UTAH, EXPIRES 12/31/03.

SEAL OF NOTARY PUBLIC: JEAN KAY SCHABACH, No. 163947, UTAH COUNTY, UTAH, EXPIRES 09/20/03.

SEAL OF CITY ENGINEER: DAVID V. THOMAS, No. 163947, UTAH COUNTY, UTAH, EXPIRES 12/31/03.

SEAL OF CLERK-RECORDER: JESSICA LYNN BRADSHAW, No. 163947, UTAH COUNTY, UTAH, EXPIRES 12/31/03.