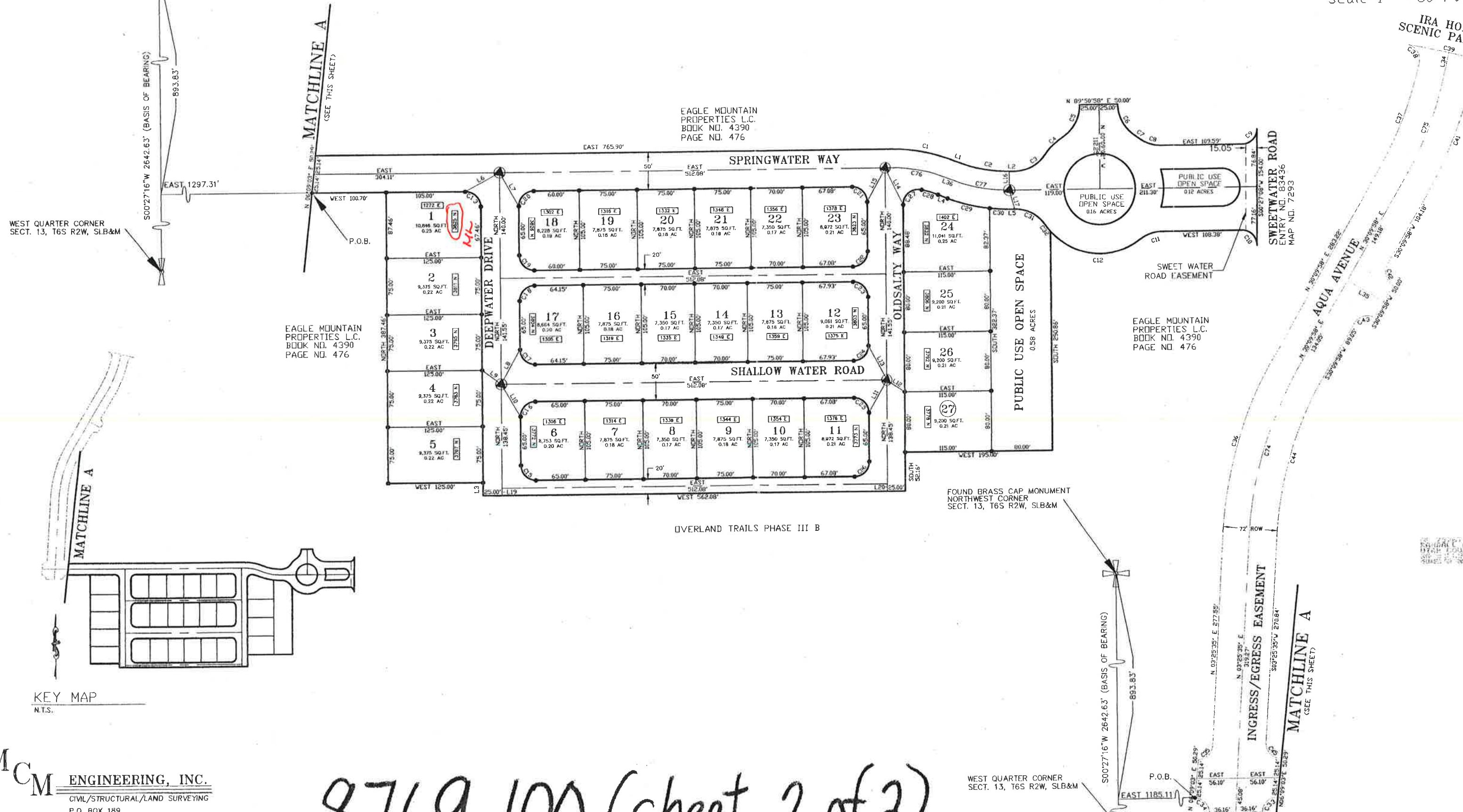


OVERLAND TRAILS PHASE III-A

FOUND BRASS CAP MONUMENT
NORTHWEST CORNER
SECT. 13, T6S R2W, SLB&M

Scale 1" = 60 ft



EAGLE MOUNTAIN
PROPERTIES L.C.
BOOK NO. 4390
PAGE NO. 476

EAGLE MOUNTAIN
PROPERTIES L.C.
BOOK NO. 4390
PAGE NO. 476

OVERLAND TRAILS PHASE III B

FOUND BRASS CAP MONUMENT
NORTHWEST CORNER
SECT. 13, T6S R2W, SLB&M

KEY MAP
N.T.S.

McM ENGINEERING, INC.
CIVIL/STRUCTURAL/LAND SURVEYING
P.O. BOX 189
1500 W. 11th St. Billings, MT 59102

8719-100 (sheet 2 of 2)

WEST QUARTER CORNER
SECT. 13, T6S R2W, SLB&M

P.O.B.

INGRESS/EGRESS EASEMENT

MATCHLINE A
(SEE THIS SHEET)

IRA HODGSON
SCENIC PARK

SWEET WATER ROAD
ENTRY NO. 63436
MAP NO. 7293