

ROCKY MOUNTAIN POWER
 1. Pursuant to Utah Code Ann. § 16-2-27(1) this plat conveys to the owner(s) an easement for the installation, operation, maintenance, and repair of utility facilities in public utility easement along with all appurtenant and appurtenant rights.
 2. Pursuant to Utah Code Ann. § 16-2-27(2)(b) Rocky Mountain Power agrees to deliver to the PUE as described in this plat and approves this plat for the purpose of confirming that the plat contains public utility easements and appropriates the location of the public utility easements, but does not warrant their precise location. Rocky Mountain Power may require other easements in order to serve this development. This approval does not constitute a guarantee of any terms contained in the plat, including those set forth in the covenants, conditions and restrictions, and does not constitute a guarantee of any other terms contained in the plat. For further information please contact Quanta's Right-of-Way department at 800-366-8532.
 3. The use of the word "easement" in this plat shall not be construed to mean that the plat contains public utility easements and appropriates the location of the public utility easements, but does not warrant their precise location. Rocky Mountain Power may require other easements in order to serve this development. This approval does not constitute a guarantee of any terms contained in the plat, including those set forth in the covenants, conditions and restrictions, and does not constitute a guarantee of any other terms contained in the plat. For further information please contact Quanta's Right-of-Way department at 800-366-8532.
 4. The use of the word "easement" in this plat shall not be construed to mean that the plat contains public utility easements and appropriates the location of the public utility easements, but does not warrant their precise location. Rocky Mountain Power may require other easements in order to serve this development. This approval does not constitute a guarantee of any terms contained in the plat, including those set forth in the covenants, conditions and restrictions, and does not constitute a guarantee of any other terms contained in the plat. For further information please contact Quanta's Right-of-Way department at 800-366-8532.

QUANTA GAS COMPANY
 Quanta Gas Company certifies that the plat contains public utility easements. Quanta may require other easements in order to serve this development. This approval does not constitute a guarantee of any terms contained in the plat, including those set forth in the covenants, conditions and restrictions, and does not constitute a guarantee of any other terms contained in the plat. For further information please contact Quanta's Right-of-Way department at 800-366-8532.
 Approved this 25th day of April, 2017. Quanta Gas Company
 [Signature] Title: [Title]

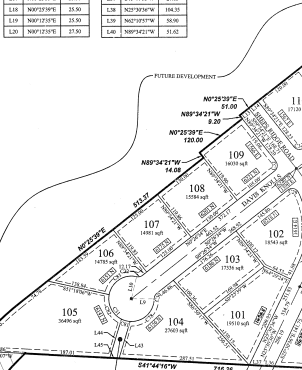
PREPARED BY
FACUS
 ENGINEERING AND SURVEYING, L.L.C.
 100 WEST CENTER STREET
 SUITE 200
 SALT LAKE CITY, UT 84119
 (801) 466-1111
 www.facus.com

Line Table

LINE	DIRECTION	LENGTH	LINE	DIRECTION	LENGTH
L01	N89°21'37"W	56.11	L11	N89°21'37"W	43.22
L02	N89°21'37"W	26.84	L12	N89°21'37"W	27.11
L03	N89°21'37"W	17.84	L13	N89°21'37"W	20.11
L04	N89°21'37"W	27.14	L14	N89°21'37"W	43.22
L05	N89°21'37"W	43.22	L15	N89°21'37"W	27.11
L06	N89°21'37"W	4.81	L16	N89°21'37"W	18.84
L07	N89°21'37"W	21.18	L17	N89°21'37"W	25.18
L08	N89°21'37"W	50.08	L18	N89°21'37"W	27.14
L09	N89°21'37"W	50.08	L19	N89°21'37"W	43.22
L10	N89°21'37"W	80.17	L20	N89°21'37"W	44.41
L21	N89°21'37"W	40.08	L21	N89°21'37"W	20.18
L22	N89°21'37"W	25.10	L22	N89°21'37"W	25.18
L23	N89°21'37"W	35.10	L23	N89°21'37"W	44.41
L24	N89°21'37"W	43.22	L24	N89°21'37"W	43.22
L25	N89°21'37"W	43.22	L25	N89°21'37"W	43.22
L26	N89°21'37"W	35.10	L26	N89°21'37"W	27.18
L27	N89°21'37"W	35.10	L27	N89°21'37"W	27.18
L28	N89°21'37"W	35.10	L28	N89°21'37"W	18.25
L29	N89°21'37"W	35.10	L29	N89°21'37"W	30.08
L30	N89°21'37"W	35.10	L30	N89°21'37"W	31.02

PLAT TABULATIONS

TOTAL ACRES: 27.83 ACRES
 TOTAL ACREAGE OF LOTS: 23.84 ACRES
 TOTAL OPEN SPACE: 1.09 ACRES OR 47.86 SQ. FT.
 TOTAL IMPROVED OPEN SPACE: 0.04 ACRES OR 1720 SQ. FT.
 AVERAGE LOT SIZE: 0.83 ACRES OR 3628 SQ. FT.
 LARGEST LOT SIZE: 0.84 ACRES OR 3698 SQ. FT.
 SMALLEST LOT SIZE: 0.23 ACRES OR 1003 SQ. FT.
 OVERALL DENSITY: 2.05 LOTS/ACRE
 TOTAL NUMBER OF LOTS: 97 LOTS



Curve Table

CURVE	RADIUS	DELTA	LENGTH	CHORD DIRECTION	CHORD LENGTH
C01	200.00	180°00'	314.16	S00°00'00"W	314.16
C02	200.00	180°00'	314.16	S00°00'00"W	314.16
C03	200.00	180°00'	314.16	S00°00'00"W	314.16
C04	200.00	180°00'	314.16	S00°00'00"W	314.16
C05	200.00	180°00'	314.16	S00°00'00"W	314.16
C06	200.00	180°00'	314.16	S00°00'00"W	314.16
C07	200.00	180°00'	314.16	S00°00'00"W	314.16
C08	200.00	180°00'	314.16	S00°00'00"W	314.16
C09	200.00	180°00'	314.16	S00°00'00"W	314.16
C10	200.00	180°00'	314.16	S00°00'00"W	314.16
C11	200.00	180°00'	314.16	S00°00'00"W	314.16
C12	200.00	180°00'	314.16	S00°00'00"W	314.16
C13	200.00	180°00'	314.16	S00°00'00"W	314.16
C14	200.00	180°00'	314.16	S00°00'00"W	314.16
C15	200.00	180°00'	314.16	S00°00'00"W	314.16
C16	200.00	180°00'	314.16	S00°00'00"W	314.16
C17	200.00	180°00'	314.16	S00°00'00"W	314.16
C18	200.00	180°00'	314.16	S00°00'00"W	314.16
C19	200.00	180°00'	314.16	S00°00'00"W	314.16
C20	200.00	180°00'	314.16	S00°00'00"W	314.16
C21	200.00	180°00'	314.16	S00°00'00"W	314.16
C22	200.00	180°00'	314.16	S00°00'00"W	314.16
C23	200.00	180°00'	314.16	S00°00'00"W	314.16
C24	200.00	180°00'	314.16	S00°00'00"W	314.16
C25	200.00	180°00'	314.16	S00°00'00"W	314.16
C26	200.00	180°00'	314.16	S00°00'00"W	314.16
C27	200.00	180°00'	314.16	S00°00'00"W	314.16
C28	200.00	180°00'	314.16	S00°00'00"W	314.16
C29	200.00	180°00'	314.16	S00°00'00"W	314.16
C30	200.00	180°00'	314.16	S00°00'00"W	314.16
C31	200.00	180°00'	314.16	S00°00'00"W	314.16
C32	200.00	180°00'	314.16	S00°00'00"W	314.16
C33	200.00	180°00'	314.16	S00°00'00"W	314.16
C34	200.00	180°00'	314.16	S00°00'00"W	314.16
C35	200.00	180°00'	314.16	S00°00'00"W	314.16
C36	200.00	180°00'	314.16	S00°00'00"W	314.16
C37	200.00	180°00'	314.16	S00°00'00"W	314.16
C38	200.00	180°00'	314.16	S00°00'00"W	314.16
C39	200.00	180°00'	314.16	S00°00'00"W	314.16
C40	200.00	180°00'	314.16	S00°00'00"W	314.16
C41	200.00	180°00'	314.16	S00°00'00"W	314.16
C42	200.00	180°00'	314.16	S00°00'00"W	314.16
C43	200.00	180°00'	314.16	S00°00'00"W	314.16
C44	200.00	180°00'	314.16	S00°00'00"W	314.16
C45	200.00	180°00'	314.16	S00°00'00"W	314.16
C46	200.00	180°00'	314.16	S00°00'00"W	314.16
C47	200.00	180°00'	314.16	S00°00'00"W	314.16
C48	200.00	180°00'	314.16	S00°00'00"W	314.16
C49	200.00	180°00'	314.16	S00°00'00"W	314.16
C50	200.00	180°00'	314.16	S00°00'00"W	314.16
C51	200.00	180°00'	314.16	S00°00'00"W	314.16
C52	200.00	180°00'	314.16	S00°00'00"W	314.16
C53	200.00	180°00'	314.16	S00°00'00"W	314.16
C54	200.00	180°00'	314.16	S00°00'00"W	314.16
C55	200.00	180°00'	314.16	S00°00'00"W	314.16
C56	200.00	180°00'	314.16	S00°00'00"W	314.16
C57	200.00	180°00'	314.16	S00°00'00"W	314.16
C58	200.00	180°00'	314.16	S00°00'00"W	314.16
C59	200.00	180°00'	314.16	S00°00'00"W	314.16
C60	200.00	180°00'	314.16	S00°00'00"W	314.16
C61	200.00	180°00'	314.16	S00°00'00"W	314.16
C62	200.00	180°00'	314.16	S00°00'00"W	314.16
C63	200.00	180°00'	314.16	S00°00'00"W	314.16
C64	200.00	180°00'	314.16	S00°00'00"W	314.16
C65	200.00	180°00'	314.16	S00°00'00"W	314.16
C66	200.00	180°00'	314.16	S00°00'00"W	314.16
C67	200.00	180°00'	314.16	S00°00'00"W	314.16
C68	200.00	180°00'	314.16	S00°00'00"W	314.16
C69	200.00	180°00'	314.16	S00°00'00"W	314.16
C70	200.00	180°00'	314.16	S00°00'00"W	314.16
C71	200.00	180°00'	314.16	S00°00'00"W	314.16
C72	200.00	180°00'	314.16	S00°00'00"W	314.16
C73	200.00	180°00'	314.16	S00°00'00"W	314.16
C74	200.00	180°00'	314.16	S00°00'00"W	314.16
C75	200.00	180°00'	314.16	S00°00'00"W	314.16
C76	200.00	180°00'	314.16	S00°00'00"W	314.16
C77	200.00	180°00'	314.16	S00°00'00"W	314.16
C78	200.00	180°00'	314.16	S00°00'00"W	314.16
C79	200.00	180°00'	314.16	S00°00'00"W	314.16
C80	200.00	180°00'	314.16	S00°00'00"W	314.16
C81	200.00	180°00'	314.16	S00°00'00"W	314.16
C82	200.00	180°00'	314.16	S00°00'00"W	314.16
C83	200.00	180°00'	314.16	S00°00'00"W	314.16
C84	200.00	180°00'	314.16	S00°00'00"W	314.16
C85	200.00	180°00'	314.16	S00°00'00"W	314.16
C86	200.00	180°00'	314.16	S00°00'00"W	314.16
C87	200.00	180°00'	314.16	S00°00'00"W	314.16
C88	200.00	180°00'	314.16	S00°00'00"W	314.16
C89	200.00	180°00'	314.16	S00°00'00"W	314.16
C90	200.00	180°00'	314.16	S00°00'00"W	314.16
C91	200.00	180°00'	314.16	S00°00'00"W	314.16
C92	200.00	180°00'	314.16	S00°00'00"W	314.16
C93	200.00	180°00'	314.16	S00°00'00"W	314.16
C94	200.00	180°00'	314.16	S00°00'00"W	314.16
C95	200.00	180°00'	314.16	S00°00'00"W	314.16
C96	200.00	180°00'	314.16	S00°00'00"W	314.16
C97	200.00	180°00'	314.16	S00°00'00"W	314.16
C98	200.00	180°00'	314.16	S00°00'00"W	314.16
C99	200.00	180°00'	314.16	S00°00'00"W	314.16
C100	200.00	180°00'	314.16	S00°00'00"W	314.16

Boundary Curve Table

CURVE	RADIUS	DELTA	LENGTH	CHORD DIRECTION	CHORD LENGTH
C1	800.00	172°52'	163.89	S89°59'58"W	261.21
C2	14.00	88°52'57"	7.92	S89°59'58"W	7.92
C3	800.00	172°52'	163.89	S89°59'58"W	261.21
C4	16.00	177°04'41"	8.00	N89°21'37"W	16.55
C5	800.00	172°52'	163.89	S89°59'58"W	261.21
C6	16.00	177°04'41"	8.00	N89°21'37"W	16.55
C7	800.00	172°52'	163.89	S89°59'58"W	261.21
C8	16.00	177°04'41"	8.00	N89°21'37"W	16.55
C9	800.00	172°52'	163.89	S89°59'58"W	261.21
C10	16.00	177°04'41"	8.00	N89°21'37"W	16.55
C11	800.00	172°52'	163.89	S89°59'58"W	261.21
C12	16.00	177°04'41"	8.00	N89°21'37"W	16.55
C13	800.00	172°52'	163.89	S89°59'58"W	261.21
C14	16.00	177°04'41"	8.00	N89°21'37"W	16.55
C15	800.00	172°52'	163.89	S89°59'58"W	261.21
C16	16.00	177°04'41"	8.00	N89°21'37"W	16.55
C17	800.00	172°52'	163.89	S89°59'58"W	261.21
C18	16.00	177°04'41"	8.00	N89°21'37"W	16.55
C19	800.00	172°52'	163.89	S89°59'58"W	261.21
C20	16.00	177°04'41"	8.00	N89°21'37"W	16.55
C21	800.00	172°52'	163.89	S89°59'58"W	261.21
C22	16.00	177°04'41"	8.00	N89°21'37"W	16.55
C23	800.00	172°52'	163.89	S89°59'58"W	261.21
C24	16.00	177°04'41"	8.00	N89°21'37"W	16.55
C25	800.00	172°52'	163.89	S89°59'58"W	261.21
C26	16.00	177°04'41"	8.00	N89°21'37"W	16.55
C27	800.00	172°52'	163.89	S89°59'58"W	261.21
C28	16.00	177°04'41"	8.00	N89°21'37"W	16.55
C29	800.00	172°52'	163.89	S89°59'58"W	261.21
C30	16.00	177°04'41"	8.00	N89°21'37"W	16.55
C31	800.00	172°52'	163.89	S89°59'58"W	261.21
C32	16.00				