

**SURVEYOR'S CERTIFICATE**  
 I, David V. Thomas, do hereby certify that I am a registered land surveyor, and that I hold certificate no. 14384, as prescribed under the laws of the state of Utah. I prepared this plat and description of the corner, I have made a survey of the tract of land shown on this plat and described below, and have established said tract of land into lots, open space, streets and easements and the same have been correctly surveyed and shown on the ground as shown on this plat and that this plat is true and correct.  
 Date July 17, 2006  
 Signature David V. Thomas  
 Surveyor

**BOUNDARY DESCRIPTION**  
 BEGINNING AT A POINT WHICH IS N 00°15'56" E 843.09 FEET ALONG THE SECTION LINE AND WEST 330.35 FEET FROM THE SOUTHWEST CORNER OF SECTION 17, TOWNSHIP 5 SOUTH, RANGE 1 WEST, SALT LAKE MERIDIAN;  
 THENCE N 00°15'56" W 204.43 FEET;  
 THENCE S 30°08'10" W 106.87 FEET;  
 THENCE ALONG THE ARC OF A 200.00 FOOT RADIUS CURVE TO THE RIGHT 68.44 FEET (DELTA=172°44', CHORD=S 73°26'40" E 68.18 FEET);  
 THENCE ALONG THE ARC OF A 200.00 FOOT RADIUS CURVE TO THE LEFT 142.36 FEET (DELTA=41°14'30", CHORD=S 00°34'40" E 142.37 FEET);  
 THENCE ALONG THE ARC OF A 200.00 FOOT RADIUS CURVE TO THE RIGHT 22.58 FEET (DELTA=04°42'10", CHORD=N 70°50'11" E 22.58 FEET);  
 THENCE N 17°00'27" W 40.77 FEET;  
 THENCE N 00°31'38" W 31.40 FEET;  
 THENCE N 00°31'38" W 11.29 FEET;  
 THENCE N 14°50'01" E 86.63 FEET TO THE POINT OF BEGINNING.  
 CONTAINS 0.982 ACRES

**OWNER'S DEDICATION**  
 WE, THE UNDERSIGNED OWNERS OF ALL THE REAL PROPERTY DEPICTED ON THIS PLAT AND DESCRIBED IN THE SURVEYOR'S CERTIFICATE ON THIS PLAT, HAVE CAUSED THE LAND DESCRIBED ON THIS PLAT TO BE DIVIDED INTO LOTS, STREETS, OPEN SPACES, EASEMENTS AND OTHER PUBLIC USES AS DEMONSTRATED ON THE PLAT AND NOW DO HEREBY DEDICATE UNDER THE PROVISIONS OF 10-96-407, UTAH CODE, WITHOUT CONDITION, RESTRICTION OR RESERVATION TO EAGLE MOUNTAIN CITY, UTAH, ALL STREETS, ALLEYS, ROWS AND OTHER PUBLIC USES AND IMPROVEMENTS, OPEN SPACES SHOWN AS PUBLIC OPEN SPACES, AND ALL OTHER PLACES OF PUBLIC USE AND ENJOYMENT TO EAGLE MOUNTAIN CITY, UTAH, TOGETHER WITH ALL IMPROVEMENTS REQUIRED BY THE DEVELOPMENT AGREEMENT BETWEEN THE UNDERSIGNED AND EAGLE MOUNTAIN CITY FOR THE BENEFIT OF THE CITY AND THE INDIVIDUALS THEREOF.  
 PRINTED NAME OF OWNER: Mt. Airey Grove, LLC  
 AUTHORIZED SIGNATURE: John J. Howard as Manager  
 JULY 18<sup>TH</sup>, 2006

**ACKNOWLEDGMENT**  
 STATE OF UTAH } ss.  
 COUNTY OF UTAH } ss.  
 ON THE 18<sup>TH</sup> DAY OF JULY, 2006 PERSONALLY APPEARED BEFORE ME THE PERSONS SIGNING THE FOREGOING OWNER'S DEDICATION KNOWN TO ME TO BE AFFRERED TO EXECUTE THE FOREGOING DEDICATION FOR AND ON BEHALF OF THE OWNERS WHO DULY ACKNOWLEDGED TO ME THAT THE OWNERS DEDICATION WAS EXECUTED BY THEM ON BEHALF OF THE OWNERS.  
 BY COMMISSIONER EXPIRES 6 FEB. 07 Thomas

**ACCEPTANCE BY LEGISLATIVE BODY**  
 THE CITY COUNCIL OF EAGLE MOUNTAIN CITY UTAH COUNTY, UTAH, APPROVES THIS SUBDIVISION PLAT AND HEREBY ACCEPTS THE DEDICATION OF ALL STREETS AND EASEMENTS FOR THE PERPETUAL USE OF THE PUBLIC THIS 18 DAY OF JULY, A.D. 2006  
 APPROVED: Christina Plautz CITY ENGINEER (SEE SEAL) John J. Howard CLERK-RECORDER (SEE SEAL)

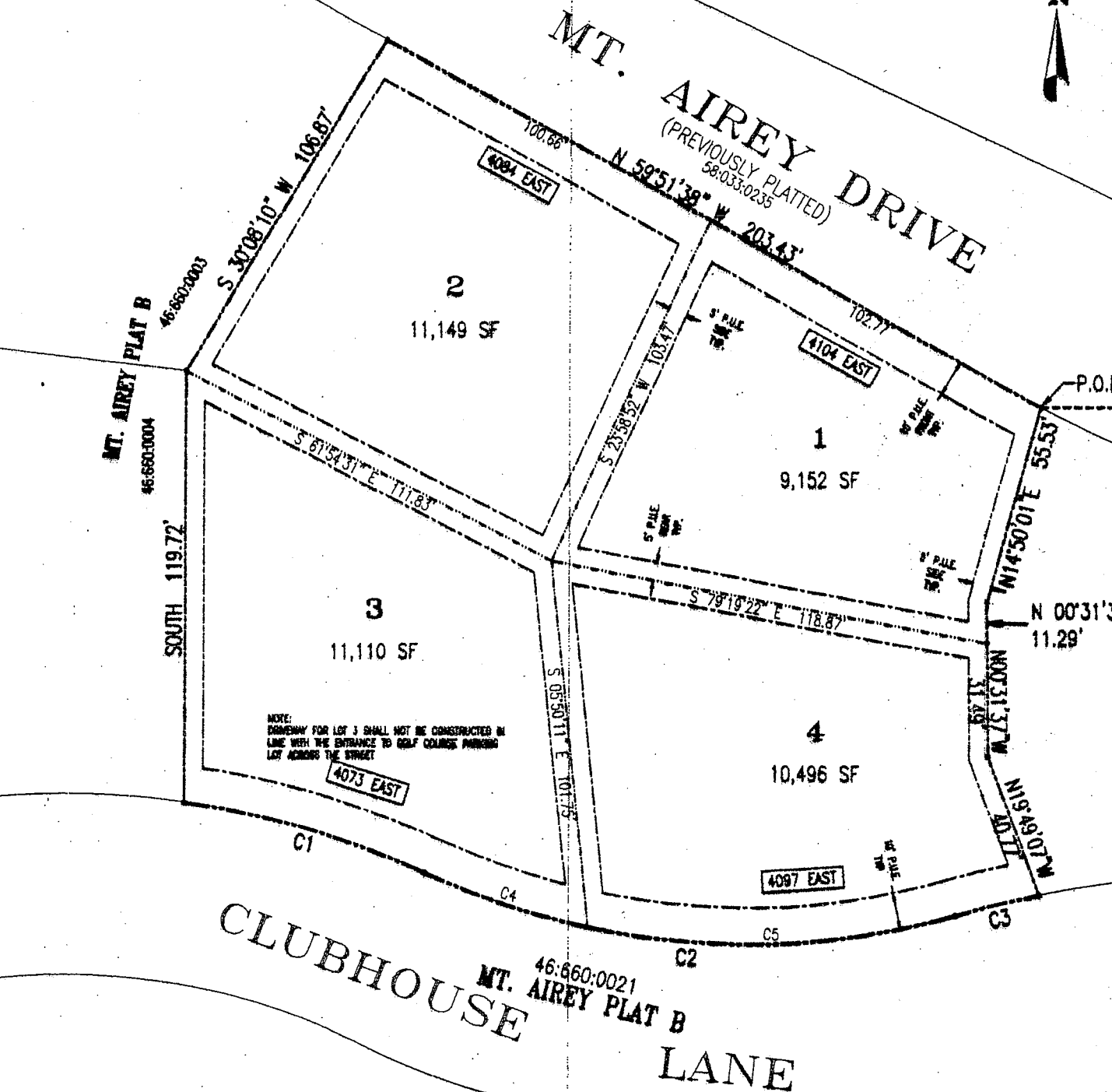
PLAT "F"  
**MT. AIREY**  
 LOCATED IN THE SE 1/4 OF SECTION 17, T5S, R1W, SLB&M  
 SUBDIVISION EAGLE MOUNTAIN CITY, UTAH COUNTY, STATE OF UTAH  
 SCALE: 1" = 20 FEET

APPROVAL AS TO FORM  
 APPROVED AS TO FORM THIS 19<sup>TH</sup> DAY OF JULY, A.D. 2006  
 Signature David V. Thomas  
 LAND SURVEYOR

NO. 14384  
 DAVID V. THOMAS  
 7-17-06  
 STATE OF UTAH

CLERK-RECORDER SEAL  
 JOHN J. HOWARD  
 7-25-06  
 STATE OF UTAH

CORPORATE SEAL  
 EAGLE MOUNTAIN CITY  
 STATE OF UTAH



MT. AIREY PLAT B  
 46:660:0002

EAST 1/4 CORNER SECTION 17 T5S, R1W, SLB&M  
 WEST 330.35'  
 P.O.B.  
 N 00°15'56" E 843.09'  
 SECTION LINE  
 BASIS OF BEARING N 00°15'56" E 2641.28' (2640.51) TO EAST 1/4 COR.  
 SOUTH EAST CORNER SECTION 17 T5S, R1W, SLB&M

81811

**CURVE TABLE**

CURVE	RADIUS	LENGTH	DELTA	CHORD	BEARING
C1	200.00	68.44	172°44'	68.18	S 73°26'40" E
C2	200.00	142.36	41°14'30"	142.37	S 00°34'40" E
C3	200.00	22.58	04°42'10"	22.58	N 70°50'11" E
C4	200.00	40.77	17°00'27"	40.77	S 77°00'27" W
C5	200.00	31.40	00°31'38"	31.40	N 00°31'38" W

**TABULATIONS**  
 LOT AREA: = 0.982 AC. = 100%  
 # OF LOTS: = 4  
 AVERAGE LOT SIZE: = 10,476 S.F.