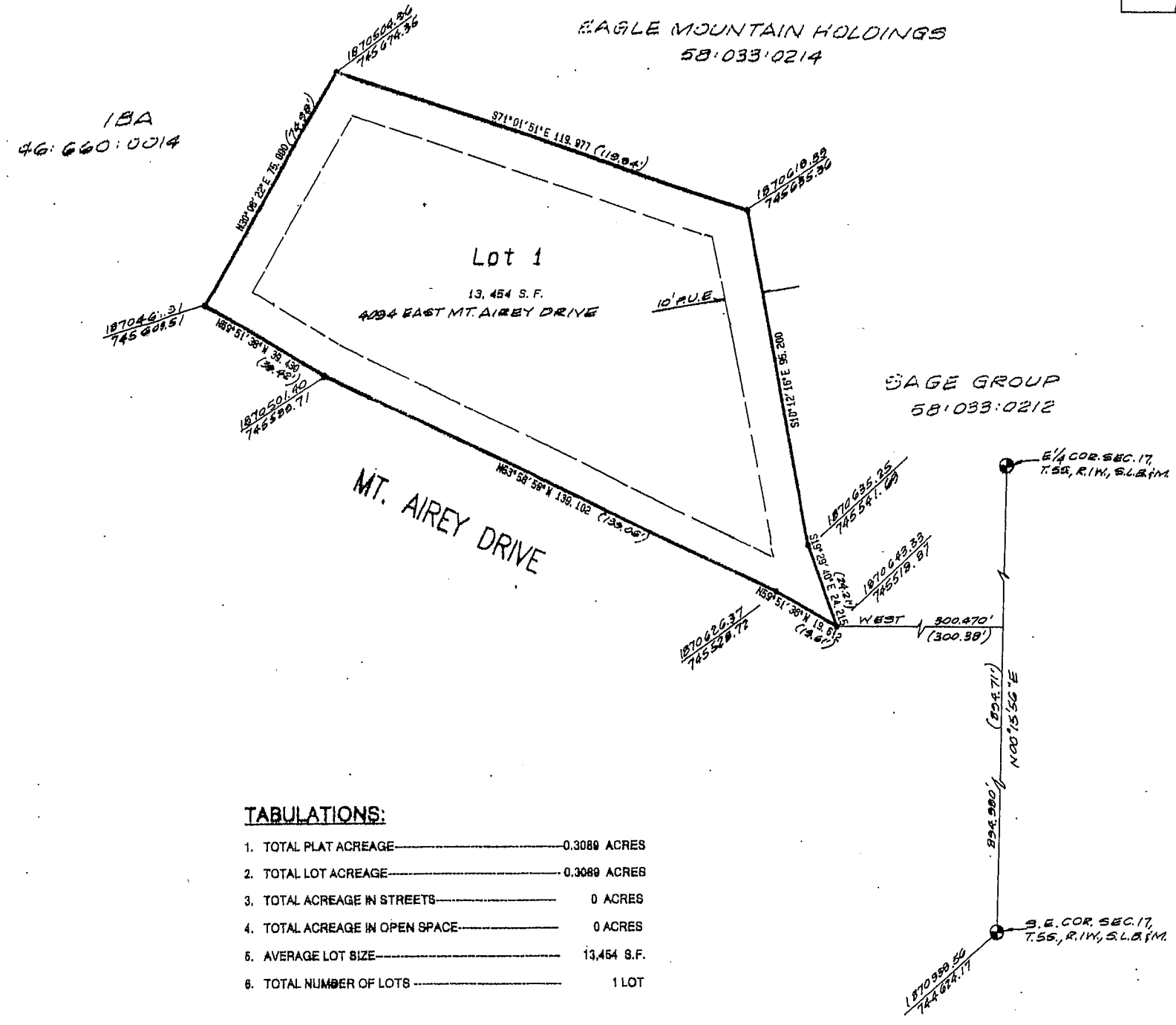
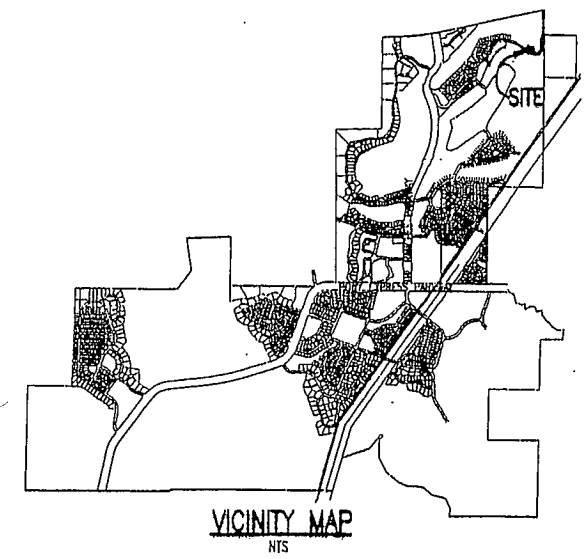


SURVEYED AND SHOWN ON THE GROUND AS SHOWN ON THIS PLAN AND CORRECT.

BOUNDARY DESCRIPTION

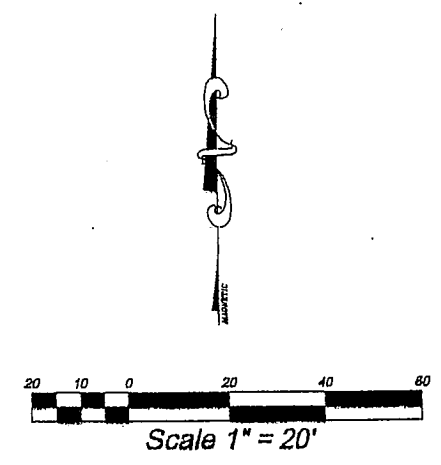
Beginning at a point in the northerly boundary of Mt. Airey Drive, said point being located No 00°15'56" East along section line 894.980 feet and West 300.470 feet from the southeast corner of Section 17, Township 5 South, Range 1 West, Salt Lake Base and Meridian; thence the following three courses and distances along said northerly boundary: North 59°51'36" West 19.612 feet; North 63°58'59" West 139.102 feet; and North 59°51'38" West 39.430 feet; thence North 30°08'22" East 75.000 feet; thence South 71°01'51" East 119.977 feet; thence South 10°12'16" East 95.200 feet; thence South 19°29'40" East 24.215 feet to the point of beginning. Area = 0.3089 acres (13,454 sq. ft.)



18A
46:660:0014

EAGLE MOUNTAIN HOLDINGS
58:033:0214

SAGE GROUP
58:033:0212



TABULATIONS:

1. TOTAL PLAT ACREAGE	0.3089 ACRES
2. TOTAL LOT ACREAGE	0.3089 ACRES
3. TOTAL ACREAGE IN STREETS	0 ACRES
4. TOTAL ACREAGE IN OPEN SPACE	0 ACRES
5. AVERAGE LOT SIZE	13,454 S.F.
6. TOTAL NUMBER OF LOTS	1 LOT

BASIS OF BEARING = STATE PLANE COORDINATE SYSTEM
 DEC. 14, 2005 DATE
 [Signature] SURVEYOR (SEE SEAL BELOW)

EAGLE MOUNTAIN DEVELOPER PLAT DEDICATION
 We, the undersigned owners of all the real property depicted on this plat and described in the surveyors certificate on this plat, have caused the land described on this plat to be divided into lots, streets, parks, open spaces, easements and other public uses as designated on the plat and now do hereby dedicate under the provisions of 10-9-807, Utah Code, without condition, restriction or reservation to Eagle Mountain City, Utah, all streets, water, sewer and other utility easements and improvements, open spaces shown as public open spaces, parks and all other places of public use and enjoyment to Eagle Mountain City, Utah, together with all improvements required by the Development Agreement between the undersigned and Eagle Mountain City, for the benefit of the City and the inhabitants thereof.
 [Signature] AUTHORIZED SIGNATURE(S)
 [Signature] AUTHORIZED SIGNATURE(S) 12.14.05

ACKNOWLEDGEMENT
 ON THE 14th DAY OF DECEMBER, A.D. 2005, PERSONALLY APPEARED BEFORE THE PERSONS SIGNING THE FOREGOING OWNER'S DEDICATION KNOW TO ME TO BE AUTHORIZED EXECUTE THE FOREGOING OWNER'S DEDICATION FOR AND ON BEHALF OF THE OWNERS WHO ACKNOWLEDGED TO ME THAT THE OWNER'S DEDICATION WAS EXECUTED BY THEM ON BEHALF THE OWNERS.
 MY COMMISSION EXPIRES September 10, 2007 [Signature] NOTARY PUBLIC (SEE SEAL BELOW)

ACCEPTANCE BY LEGISLATIVE BODY
 THE CITY OF EAGLE MOUNTAIN OF EAGLE MOUNTAIN COUNTY OF UTAH, APPROVES THIS SUBMISSION AND HEREBY ACCEPTS THE DEDICATION OF A STREETS, EASEMENTS, AND OTHER PARCELS OF LAND INTENDED FOR PUBLIC PURPOSES FOR PERPETUAL USE OF THE PUBLIC THIS 14 DAY OF DECEMBER, A.D. 2005.
 [Signature] MAYOR
 [Signature] ATTEST
 [Signature] ENGINEER (See Seal Below)
 [Signature] CLERK-RECORDER (See Seal Below)

PL 1428012005-04-11
 EAGLE MOUNTAIN CITY
 UTAH COUNTY, UTAH
 FORM NO. 01 SURV. 30 FEB. 11.00 BY
 SECURED FOR EAGLE MOUNTAIN CITY

21411

PLAT "E"
MT. AIREY
AT PRAIRIE GATE RANCH
 CITY OF EAGLE MOUNTAIN UTAH COUNTY, UTAH
 SCALE 1" = 20 FEET

SURVEYOR:
 AZTEC ENGINEERING
 491 NORTH 450 WEST
 OREM, UTAH 84057
 (801) 224-7308

--	--	--

THIS FORM APPROVED BY THE CITY AND THE MUNICIPALITIES THEREIN.