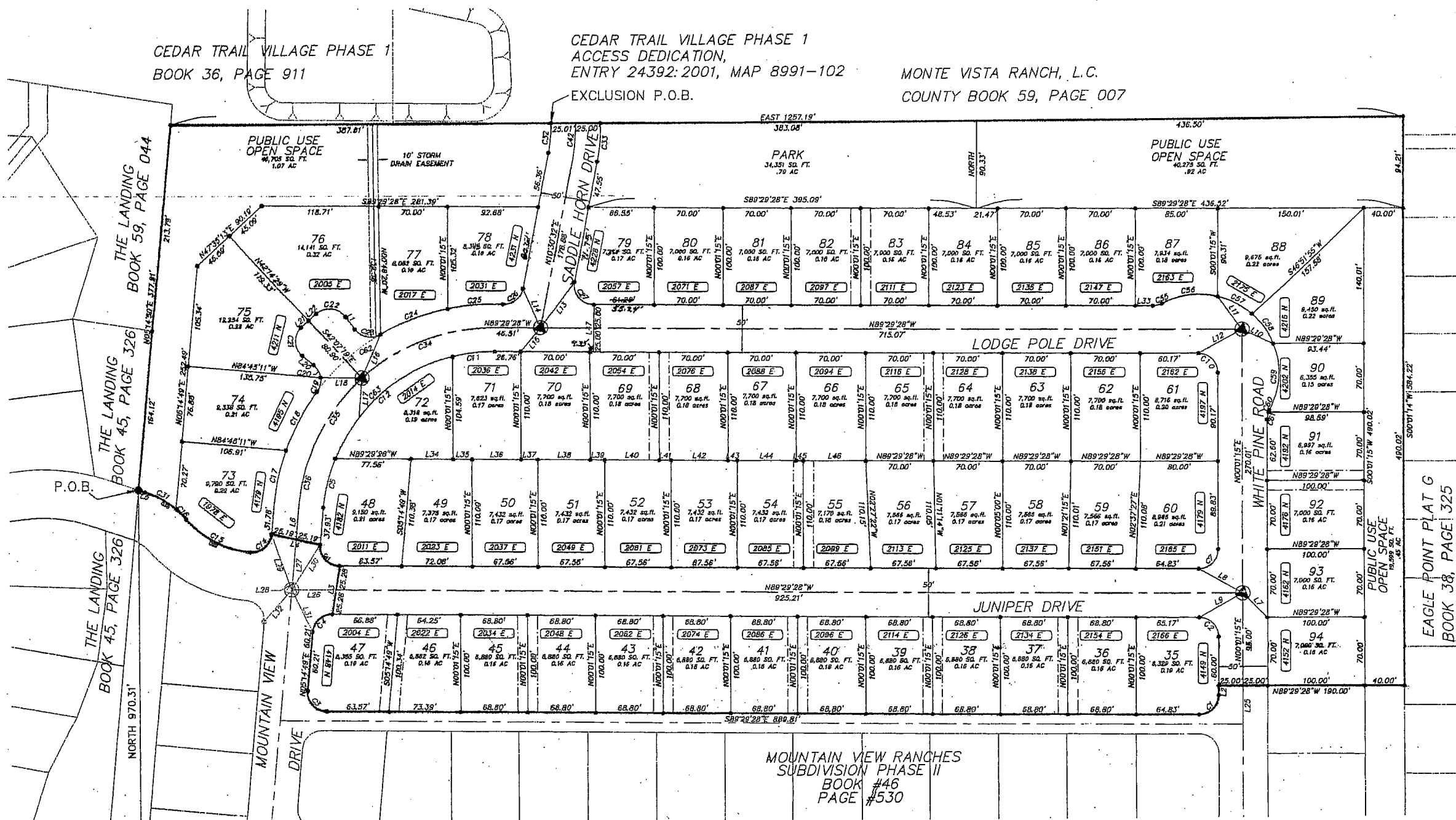
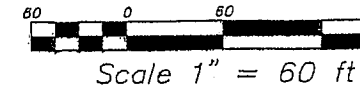


CEDAR TRAIL VILLAGE PHASE 1
BOOK 36, PAGE 911

CEDAR TRAIL VILLAGE PHASE 1
ACCESS DEDICATION,
ENTRY 24392:2001, MAP 8991-102
EXCLUSION P.O.B.

MONTE VISTA RANCH, L.C.
COUNTY BOOK 59, PAGE 007



FOUND BRASS CAP MONUMENT
SOUTH 1/4 CORNER
SECT. 12, T6S R2W, SLB&M
2491.89' ·
N89°31'09"W 2667.31' (BASIS OF BEARING)

FOUND BRASS CAP MONUMENT
SOUTHEAST CORNER
SECT. 12, T6S R2W, SLB&M

INDICATES 10' CROSS LOT ACCESS EASEMENT

NOTE:
LOTS 36-47, 54, 55, 64, 65, 68, 69, 82, 83, 91, & 92 SHALL TAKE
ACCESS THROUGH THE 10' CROSS LOT ACCESS EASEMENTS AS SHOWN
HEREON. SAID EASEMENTS SHALL PROVIDE PERPETUAL INGRESS AND
EGRESS TO THE ABOVE LISTED LOTS IN THIS SUBDIVISION AND SHALL BE
MAINTAINED AS PROVIDED FOR IN THE COVENANTS, CONDITIONS, AND
RESTRICTIONS PROVIDED FOR THIS SUBDIVISION.