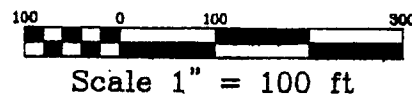
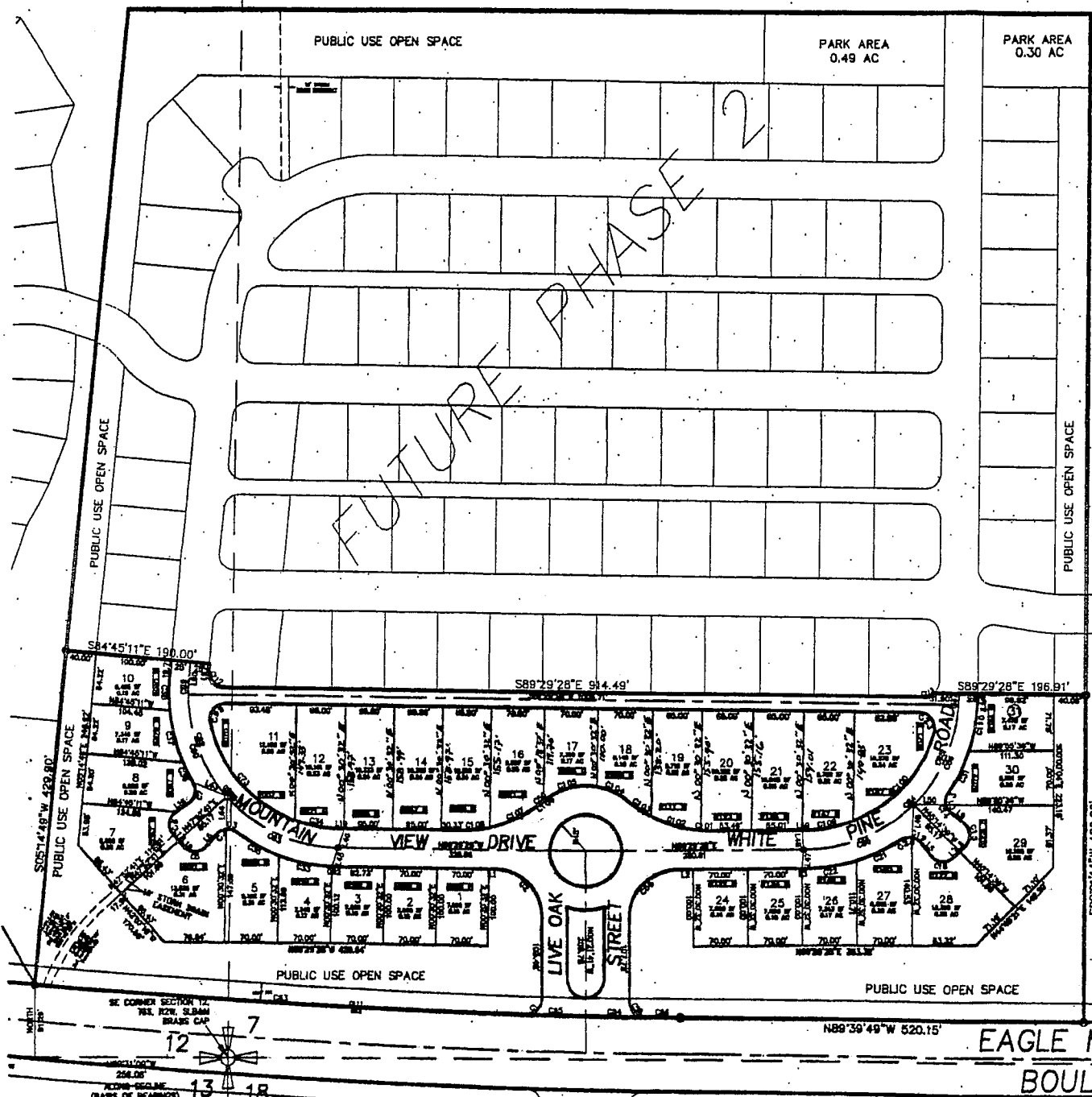


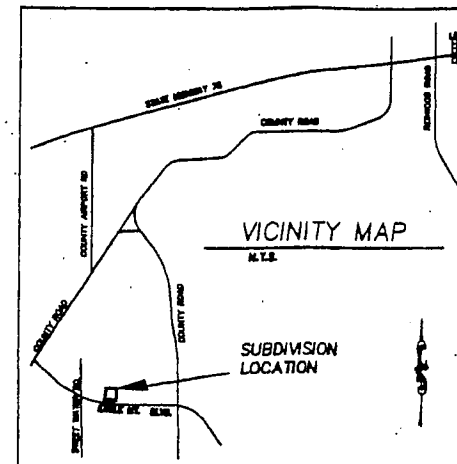
MOUNTAIN VIEW SUBDIVISION



T6S, R2W
T6S, R1W



LINE	LENGTH	BEARING
L1	9.04	N89°28'28"W
L2	21.21	N89°28'28"E
L3	1.43	N89°28'28"E
L4	30.18	N89°58'45"W
L5	20.20	N38°21'09"W
L6	20.11	N40°58'51"E
L7	11.09	N44°45'11"E
L8	10.64	N44°45'11"E
L9	20.11	N52°08'29"W
L10	18.78	N36°02'14"W
L11	4.31	N38°02'37"W
L12	11.09	N47°04'08"E
L13	10.64	N47°04'08"E
L14	15.14	N49°49'34"W
L15	4.31	N39°02'37"W
L16	20.20	N54°48'11"E
L17	11.09	N42°07'29"W
L18	10.64	N42°07'29"W
L19	7.73	N89°28'28"W
L20	51.82	N28°49'37"W
L21	51.14	N28°16'59"E
L22	51.82	N28°49'37"W
L23	51.14	N28°16'59"E
L24	51.14	N28°16'59"E
L25	4.31	N39°02'37"W
L26	23.18	N89°28'28"W
L27	8.07	N71°57'33"W
L28	0.40	N71°57'33"W
L31	51.82	N28°49'37"W
L32	46.14	N32°49'39"E
L33	32.87	N40°58'27"E
L34	36.62	N46°26'36"W
L35	49.10	N23°09'02"E
L36	42.22	N89°09'39"W
L37	50.59	N24°21'59"W
L38	53.02	N33°22'40"E
L39	48.38	N25°51'51"W
L40	54.91	N32°19'58"E
L41	54.91	N32°19'58"E
L42	46.38	N25°51'51"W
L43	46.35	N67°29'42"W
L44	42.19	N00°40'57"E
L45	25.92	N18°48'16"E
L46	26.17	N17°40'56"E
L47	25.04	N02°41'41"E
L48	25.04	N03°54'09"W
L49	42.44	N02°24'53"E
L50	42.44	N89°32'47"E
L51	57.89	N25°33'51"W
L57	8.51	N05°14'49"E
L58	1.48	N89°28'28"E
L60	9.71	N05°14'49"E
L61	2.64	N89°28'15"E



CURVE	LENGTH	RADIUS	DELTA	TANGENT	DIRECTION	CHORD
C1	33.04	20.00	81.9024	28.74	N49°54'41"	28.74
C2	14.80	20.00	48.8111	14.43	N49°54'41"	14.43
C3	14.80	20.00	48.8111	14.43	N49°54'41"	14.43
C4	14.80	20.00	48.8111	14.43	N49°54'41"	14.43
C5	33.04	20.00	81.9024	28.74	N49°54'41"	28.74
C6	33.04	20.00	81.9024	28.74	N49°54'41"	28.74
C7	28.91	20.00	80.1541	18.20	N49°54'41"	18.20
C8	18.12	20.00	43.8107	7.84	N49°54'41"	7.84
C9	18.12	20.00	43.8107	7.84	N49°54'41"	7.84
C10	18.12	20.00	43.8107	7.84	N49°54'41"	7.84
C11	33.02	20.00	81.8511	28.73	N49°54'41"	28.73
C12	28.26	20.00	80.2611	18.23	N49°54'41"	18.23
C13	14.80	20.00	48.8111	14.43	N49°54'41"	14.43
C14	14.80	20.00	48.8111	14.43	N49°54'41"	14.43
C15	14.80	20.00	48.8111	14.43	N49°54'41"	14.43
C16	14.80	20.00	48.8111	14.43	N49°54'41"	14.43
C17	33.02	20.00	81.8511	28.73	N49°54'41"	28.73
C18	14.80	20.00	48.8111	14.43	N49°54'41"	14.43
C19	14.80	20.00	48.8111	14.43	N49°54'41"	14.43
C20	14.80	20.00	48.8111	14.43	N49°54'41"	14.43
C21	14.80	20.00	48.8111	14.43	N49°54'41"	14.43
C22	14.80	20.00	48.8111	14.43	N49°54'41"	14.43
C23	14.80	20.00	48.8111	14.43	N49°54'41"	14.43
C24	14.80	20.00	48.8111	14.43	N49°54'41"	14.43
C25	14.80	20.00	48.8111	14.43	N49°54'41"	14.43
C26	14.80	20.00	48.8111	14.43	N49°54'41"	14.43
C27	14.80	20.00	48.8111	14.43	N49°54'41"	14.43
C28	14.80	20.00	48.8111	14.43	N49°54'41"	14.43
C29	14.80	20.00	48.8111	14.43	N49°54'41"	14.43
C30	14.80	20.00	48.8111	14.43	N49°54'41"	14.43
C31	14.80	20.00	48.8111	14.43	N49°54'41"	14.43
C32	14.80	20.00	48.8111	14.43	N49°54'41"	14.43
C33	14.80	20.00	48.8111	14.43	N49°54'41"	14.43
C34	14.80	20.00	48.8111	14.43	N49°54'41"	14.43
C35	14.80	20.00	48.8111	14.43	N49°54'41"	14.43
C36	14.80	20.00	48.8111	14.43	N49°54'41"	14.43
C37	14.80	20.00	48.8111	14.43	N49°54'41"	14.43
C38	14.80	20.00	48.8111	14.43	N49°54'41"	14.43
C39	14.80	20.00	48.8111	14.43	N49°54'41"	14.43
C40	14.80	20.00	48.8111	14.43	N49°54'41"	14.43
C41	14.80	20.00	48.8111	14.43	N49°54'41"	14.43
C42	14.80	20.00	48.8111	14.43	N49°54'41"	14.43
C43	14.80	20.00	48.8111	14.43	N49°54'41"	14.43
C44	14.80	20.00	48.8111	14.43	N49°54'41"	14.43
C45	14.80	20.00	48.8111	14.43	N49°54'41"	14.43
C46	14.80	20.00	48.8111	14.43	N49°54'41"	14.43
C47	14.80	20.00	48.8111	14.43	N49°54'41"	14.43
C48	14.80	20.00	48.8111	14.43	N49°54'41"	14.43
C49	14.80	20.00	48.8111	14.43	N49°54'41"	14.43
C50	14.80	20.00	48.8111	14.43	N49°54'41"	14.43
C51	14.80	20.00	48.8111	14.43	N49°54'41"	14.43
C52	14.80	20.00	48.8111	14.43	N49°54'41"	14.43
C53	14.80	20.00	48.8111	14.43	N49°54'41"	14.43
C54	14.80	20.00	48.8111	14.43	N49°54'41"	14.43
C55	14.80	20.00	48.8111	14.43	N49°54'41"	14.43
C56	14.80	20.00	48.8111	14.43	N49°54'41"	14.43
C57	14.80	20.00	48.8111	14.43	N49°54'41"	14.43
C58	14.80	20.00	48.8111	14.43	N49°54'41"	14.43
C59	14.80	20.00	48.8111	14.43	N49°54'41"	14.43
C60	14.80	20.00	48.8111	14.43	N49°54'41"	14.43
C61	14.80	20.00	48.8111	14.43	N49°54'41"	14.43
C62	14.80	20.00	48.8111	14.43	N49°54'41"	14.43
C63	14.80	20.00	48.8111	14.43	N49°54'41"	14.43
C64	14.80	20.00	48.8111	14.43	N49°54'41"	14.43
C65	14.80	20.00	48.8111	14.43	N49°54'41"	14.43
C66	14.80	20.00	48.8111	14.43	N49°54'41"	14.43
C67	14.80	20.00	48.8111	14.43	N49°54'41"	14.43
C68	14.80	20.00	48.8111	14.43	N49°54'41"	14.43
C69	14.80	20.00	48.8111	14.43	N49°54'41"	14.43
C70	14.80	20.00	48.8111	14.43	N49°54'41"	14.43
C71	14.80	20.00	48.8111	14.43	N49°54'41"	14.43
C72	14.80	20.00	48.8111	14.43	N49°54'41"	14.43
C73	14.80	20.00	48.8111	14.43	N49°54'41"	14.43
C74	14.80	20.00	48.8111	14.43	N49°54'41"	14.43
C75	14.80	20.00	48.8111	14.43	N49°54'41"	14.43
C76	14.80	20.00	48.8111	14.43	N49°54'41"	14.43
C77	14.80	20.00	48.8111	14.43	N49°54'41"	14.43
C78	14.80	20.00	48.8111	14.43	N49°54'41"	14.43
C79	14.80	20.00	48.8111	14.43	N49°54'41"	14.43
C80	14.80	20.00	48.8111	14.43	N49°54'41"	14.43
C81	14.80	20.00	48.8111	14.43	N49°54'41"	14.43
C82	14.80	20.00	48.8111	14.43	N49°54'41"	14.43
C83	14.80	20.00	48.8111	14.43	N49°54'41"	14.43
C84	14.80	20.00	48.8111	14.43	N49°54'41"	14.43
C85	14.80	20.00	48.8111	14.43	N49°54'41"	14.43
C86	14.80	20.00	48.8111	14.43	N49°54'41"	14.43
C87	14.80	20.00	48.8111	14.43	N49°54'41"	14.43
C88	14.80	20.00	48.8111	14.43	N49°54'41"	14.43
C89	14.80	20.00	48.8111	14.43	N49°54'41"	14.43
C90	14.80	20.00	48.8111	14.43	N49°54'41"	14.43
C91	14.80	20.00	48.8111	14.43	N49°54'41"	14.43
C92	14.80	20.00	48.8111	14.43	N49°54'41"	14.43
C93	14.80	20.00	48.8111	14.43	N49°54'41"	14.43
C94	14.80	20.00	48.8111	14.43	N49°54'41"	14.43
C95	14.80	20.00	48.8111	14.43	N49°54'41"	14.43
C96	14.80	20.00	48.8111	14.43	N49°54'41"	14.43
C97	14.80	20.00	48.8111	14.43	N49°54'41"	14.43
C98	14.80	20.00	48.8111	14.43	N49°54'41"	14.43
C99	14.80	20.00	48.8111	14.43	N49°54'41"	14.43
C100	14.80	20.00	48.8111	14.43	N49°54'41"	14.43

SURVEYOR'S CERTIFICATE
 I, BRIG CHRISTENSEN, DO HEREBY CERTIFY THAT I AM A REGISTERED LAND SURVEYOR AND HOLD CERTIFICATE NO. 145796 AS PRESCRIBED UNDER THE LAWS OF THE STATE OF UTAH. I FURTHER CERTIFY THAT I HAVE MADE A SURVEY OF THE LAND SHOWN ON THIS PLAN AND DESCRIBED BELOW, AND HAVE SUBDIVIDED SAID TRACT OF LAND INTO LOTS, BLOCKS, STREETS, AND EASEMENTS AND THE SAME HAVE BEEN CORRECTLY STAKED ON THE GROUND AS SHOWN ON THIS PLAN AND THAT THIS IS TRUE AND CORRECT.
MOUNTAIN VIEW SUBDIVISION PHASE 1 LEGAL DESCRIPTION
 Beginning at a point on the North Right-of-Way line of Eagle Mountain Boulevard, said point has North 89°28'28" West 9.04 feet and East 21.21 feet to the beginning of a 28.91 foot radius curve to the Northwest, a distance for said curve to South 49°54'41" East 18.20 feet.
 Thence North 89°54'41" East 18.20 feet.
 Thence South 89°54'41" West 18.20 feet to the beginning of a 28.91 foot radius curve to the Northwest, a distance for said curve to South 49°54'41" East 18.20 feet.
 Thence North 89°54'41" East 18.20 feet through a curved angle of 89°54'41".
 Thence South 89°54'41" East 18.20 feet to the beginning of a 28.91 foot radius curve to the Northwest, a distance for said curve to South 49°54'41" East 18.20 feet.
 Thence North 89°54'41" East 18.20 feet through a curved angle of 89°54'41".
 Thence South 89°54'41" East 18.20 feet to the beginning of a 28.91 foot radius curve to the Northwest, a distance for said curve to South 49°54'41" East 18.20 feet.
 Thence North 89°54'41" East 18.20 feet through a curved angle of 89°54'41".
 Thence South 89°54'41" East 18.20 feet to the beginning of a 28.91 foot radius curve to the Northwest, a distance for said curve to South 49°54'41" East 18.20 feet.
 Thence North 89°54'41" East 18.20 feet through a curved angle of 89°54'41".
 Thence South 89°54'41" East 18.20 feet to the beginning of a 28.91 foot radius curve to the Northwest, a distance for said curve to South 49°54'41" East 18.20 feet.
 Thence North 89°54'41" East 18.20 feet through a curved angle of 89°54'41".
 Thence South 89°54'41" East 18.20 feet to the beginning of a 28.91 foot radius curve to the Northwest, a distance for said curve to South 49°54'41" East 18.20 feet.
 Thence North 89°54'41" East 18.20 feet through a curved angle of 89°54'41".
 Thence South 89°54'41" East 18.20 feet to the beginning of a 28.91 foot radius curve to the Northwest, a distance for said curve to South 49°54'41" East 18.20 feet.
 Thence North 89°54'41" East 18.20 feet through a curved angle of 89°54'41".
 Thence South 89°54'41" East 18.20 feet to the beginning of a 28.91 foot radius curve to the Northwest, a distance for said curve to South 49°54'41" East 18.20 feet.
 Thence North 89°54'41" East 18.20 feet through a curved angle of 89°54'41".
 Thence South 89°54'41" East 18.20 feet to the beginning of a 28.91 foot radius curve to the Northwest, a distance for said curve to South 49°54'41" East 18.20 feet.
 Thence North 89°54'41" East 18.20 feet through a curved angle of 89°54'41".
 Thence South 89°54'41" East 18.20 feet to the beginning of a 28.91 foot radius curve to the Northwest, a distance for said curve to South 49°54'41" East 18.20 feet.
 Thence North 89°54'41" East 18.20 feet through a curved angle of 89°54'41".
 Thence South 89°54'41" East 18.20 feet to the beginning of a 28.91 foot radius curve to the Northwest, a distance for said curve to South 49°54'41" East 18.20 feet.
 Thence North 89°54'41" East 18.20 feet through a curved angle of 89°54'41".
 Thence South 89°54'41" East 18.20 feet to the beginning of a 28.91 foot radius curve to the Northwest, a distance for said curve to South 49°54'41" East 18.20 feet.
 Thence North 89°54'41" East 18.20 feet through a curved angle of 89°54'41".
 Thence South 89°54'41" East 18.20 feet to the beginning of a 28.91 foot radius curve to the Northwest, a distance for said curve to South 49°54'41" East 18.20 feet.
 Thence North 89°54'41" East 18.20 feet through a curved angle of 89°54'41".
 Thence South 89°54'41" East 18.20 feet to the beginning of a 28.91 foot radius curve to the Northwest, a distance for said curve to South 49°54'41" East 18.20 feet.
 Thence North 89°54'41" East 18.20 feet through a curved angle of 89°54'41".
 Thence South 89°54'41" East 18.20 feet to the beginning of a 28.91 foot radius curve to the Northwest, a distance for said curve to South 49°54'41" East 18.20 feet.
 Thence North 89°54'41" East 18.20 feet through a curved angle of 89°54'41".
 Thence South 89°54'41" East 18.20 feet to the beginning of a 28.91 foot radius curve to the Northwest, a distance for said curve to South 49°54'41" East 18.20 feet.
 Thence North 89°54'41" East 18.20 feet through a curved angle of 89°54'41".
 Thence South 89°54'41" East 18.20 feet to the beginning of a 28.91 foot radius curve to the Northwest, a distance for said curve to South 49°54'41" East 18.20 feet.
 Thence North 89°54'41" East 18.20 feet through a curved angle of 89°54'41".
 Thence South 89°54'41" East 18.20 feet to the beginning of a 28.91 foot radius curve to the Northwest, a distance for said curve to South 49°54'41" East 18.20 feet.
 Thence North 89°54'41" East 18.20