

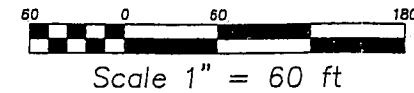


# EAGLE POINT SUBDIVISION PLAT "B"

**McM ENGINEERING, INC.**  
 CIVIL/STRUCTURAL/ARCHITECTURAL/LAND SURVEYING

P.O. BOX 189  
 HEBER, UT 84032  
 (435) 654-0939

PROJECT #97320 DRAFTED BY SMT 04/09/98  
 REVISED BY SMT 08/03/98 - NEW LOT WIDTHS SUNSET DRIVE  
 File Name: F:\98\97320\PLAT\PLAT.BLDWG



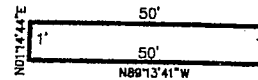
NORTHEAST CORNER SEC. 13, T8S, R2W, S18844 (FOUND)

G.L.O. MONUMENT LYING N00°24'43"E 21315.99 (GRID = 21309.59) FROM THE G.L.O. MONUMENT AT THE SOUTHEAST CORNER SECTION 3A, T8S, R2W, S18844. SAID MONUMENT HAVING STATE PLANE RECTANGULAR COORDINATES (UTAH CENTRAL ZONE) OF N=697382.42 E=1859061.57 AND A BEARING TO LAKE MOUNTAIN #1 OF N53°16'23"E

BASES OF BEARINGS (ALONG SECTION LINE)  
 N89°31'09"W 2867.31'

N89°31'09"W 1863.65'

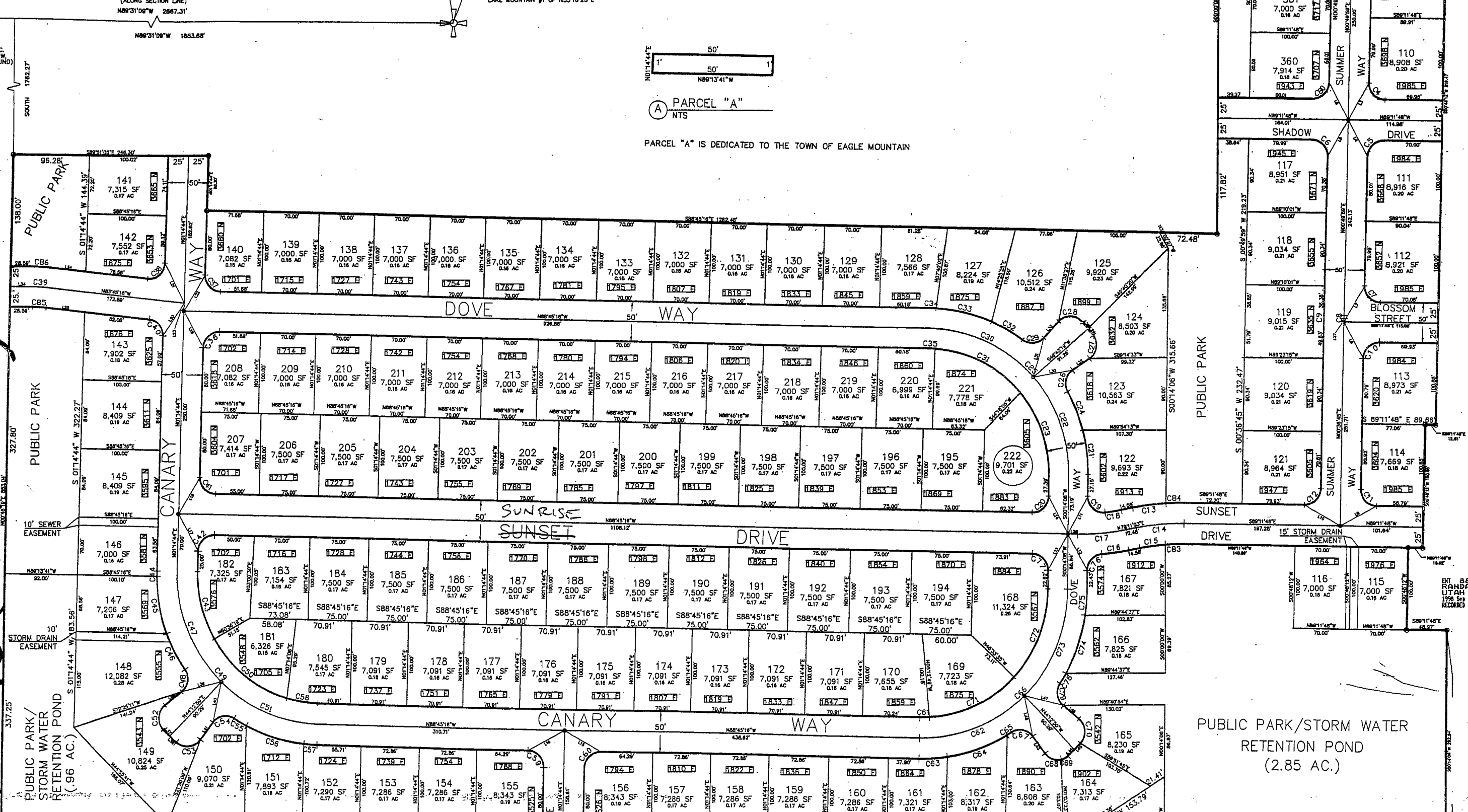
NORTH 1/4 CORNER SEC. 13, T8S, R2W, S18844 (FOUND)



PARCEL "A" NTS

PARCEL "A" IS DEDICATED TO THE TOWN OF EAGLE MOUNTAIN

713-10 (sheet 2 of 2)



ENT 88669 No. 1 7713  
 RANDALL A. COVINGTON  
 UTAH COUNTY RECORDER  
 1998 SEP 28 4:55 AM FB 173.00 THIS  
 RECORD FOR TOWN OF EAGLE MOUNTAIN

PUBLIC PARK/STORM WATER  
 RETENTION POND  
 (2.85 AC.)