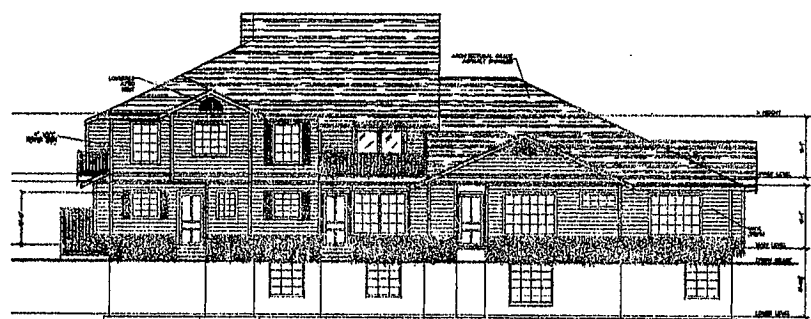
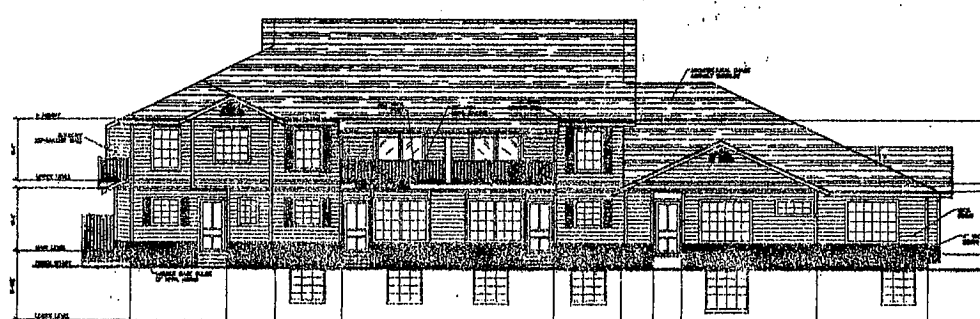


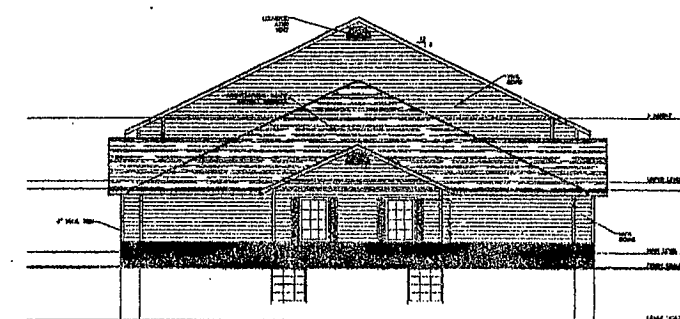
LEFT ELEVATION



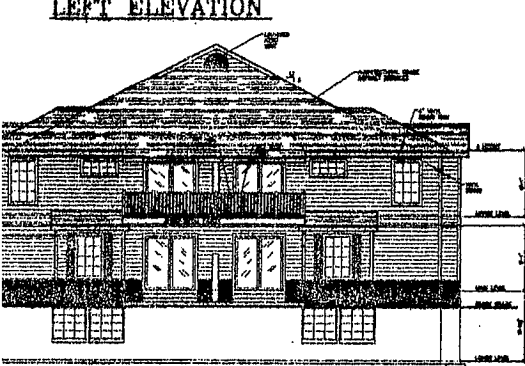
REAR ELEVATION



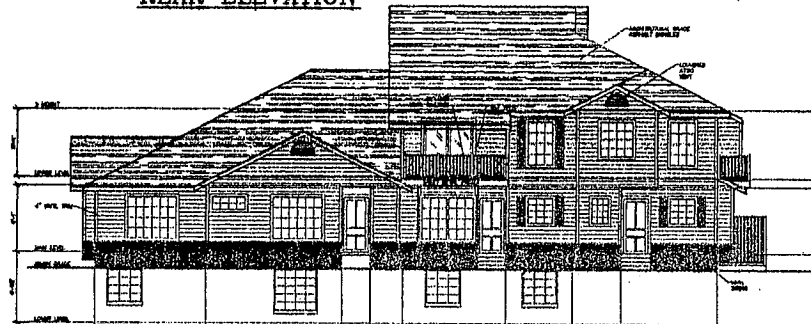
REAR ELEVATION



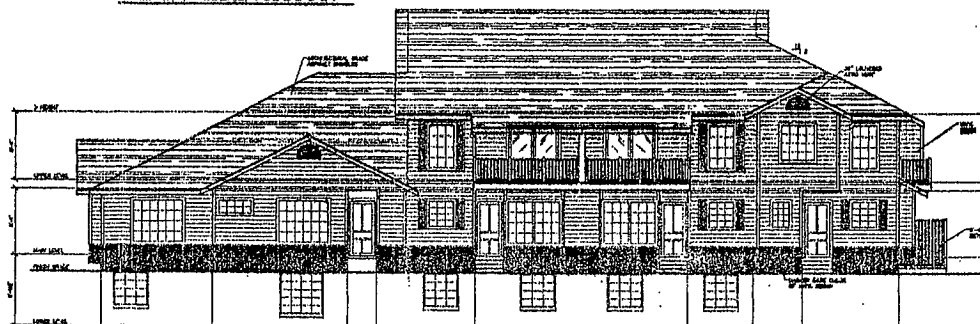
LEFT ELEVATION



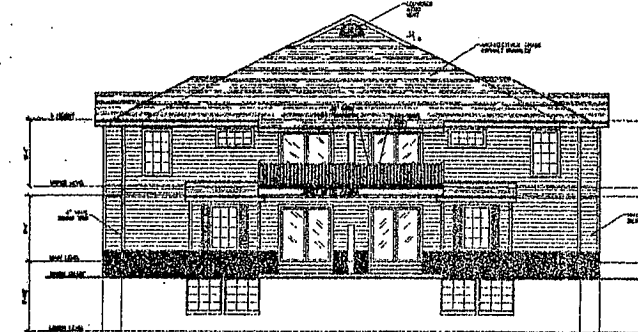
RIGHT ELEVATION



FRONT ELEVATION



FRONT ELEVATION

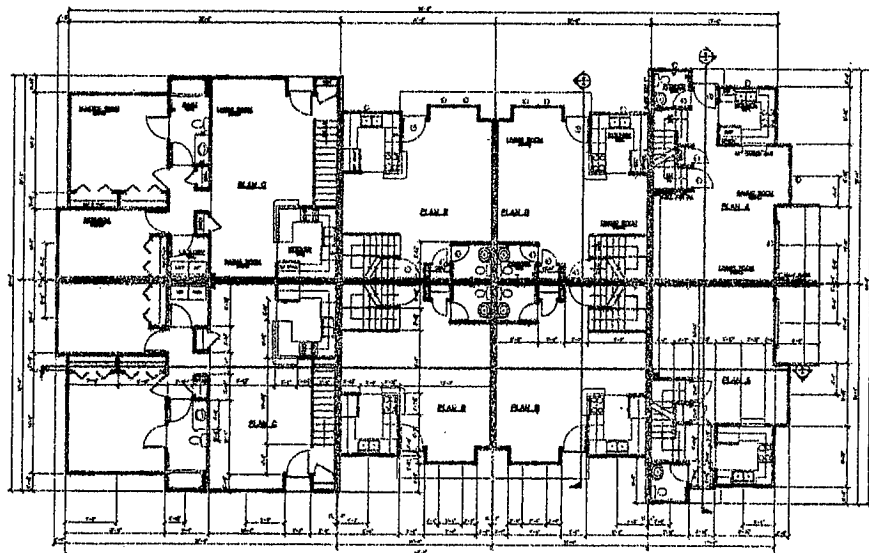


RIGHT ELEVATION

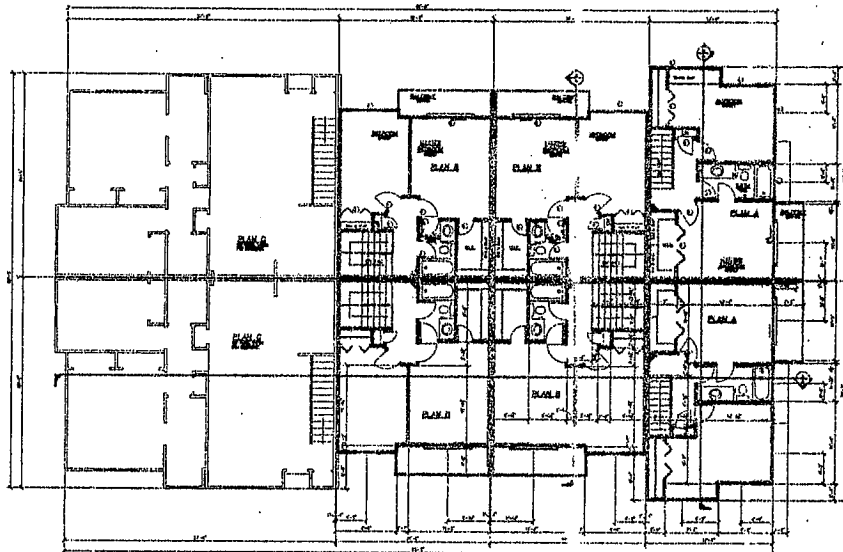
SIX UNIT CONDO (TYPE II)  
NTS

EIGHT UNIT CONDO (TYPE I)  
NTS

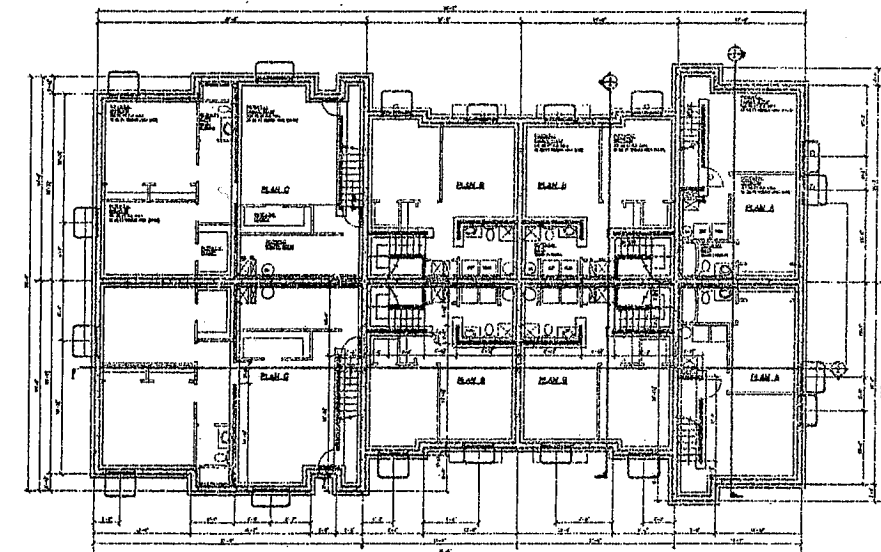
UNIT CONDO



1ST LEVEL

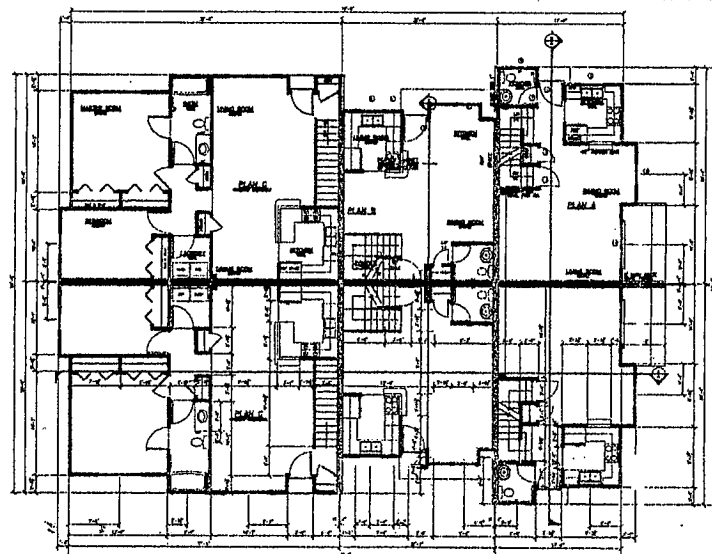


2ND LEVEL

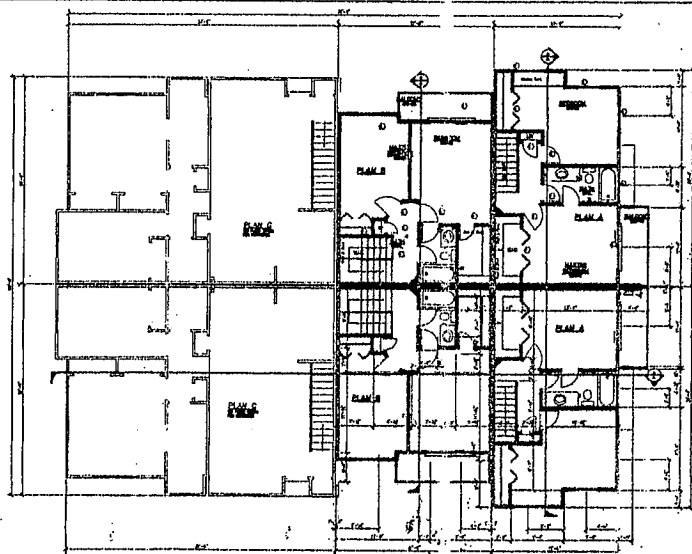


BASEMENT

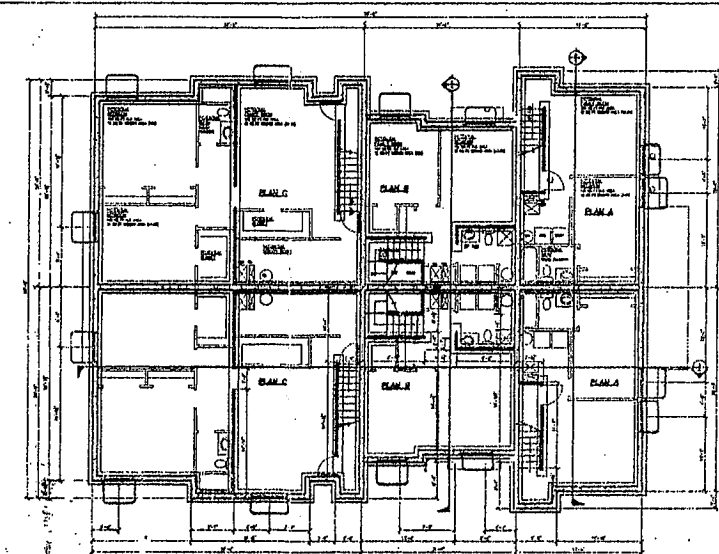
SIX UNIT CONDO (TYPE II)  
NTS



1ST LEVEL



2ND LEVEL



BASEMENT

9756-110  
(sheet 2 of 3)

CM ENGINEERING, INC.  
CIVIL/STRUCTURAL/LAND SURVEYING  
P.O. BOX 159  
HEBER, UT 84032  
(435) 654-0939

BY 125993-8002 11/1/98  
NABAR, R. COVINGTON  
UTAH COUNTY RECORDER  
2002 OCT 13 9:01 AM FILE 174.00 BY AS  
RECORDED FOR CITY OF HEBER, UTAH

DRAWN BY: SJS	APPROVED BY: J.C.D.	REVISIONS
DATE: 5/9/99	PROJ. NO: 9721	
ENG. NO:	DWG:	

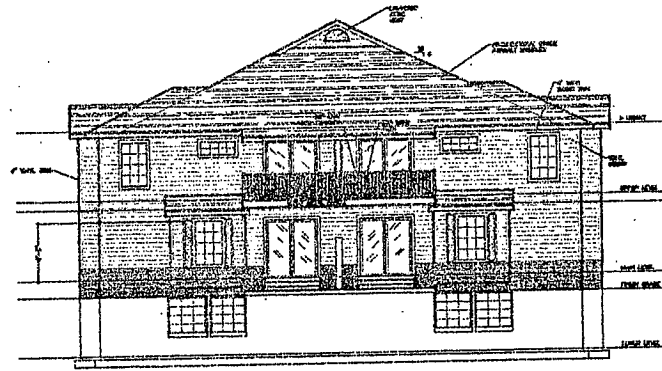
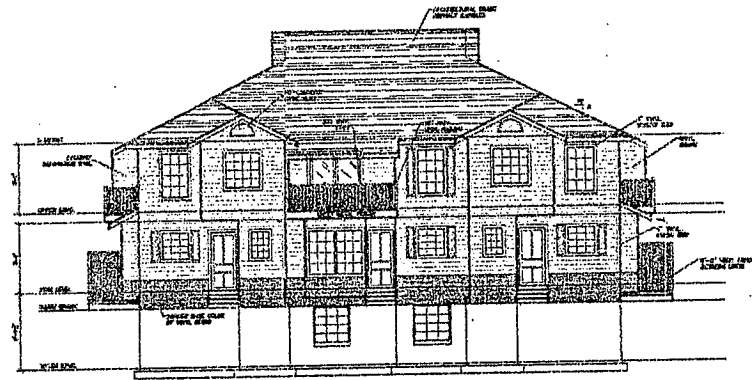
CM ENGINEERING, INC.  
P.O. BOX 159 PROJECT  
HEBER CITY, UT, 84032

EAGLE POINT CONDO'S

SHT. NAME	SHT. NO.
CONDO LAYOUT & ELEVATIONS	2

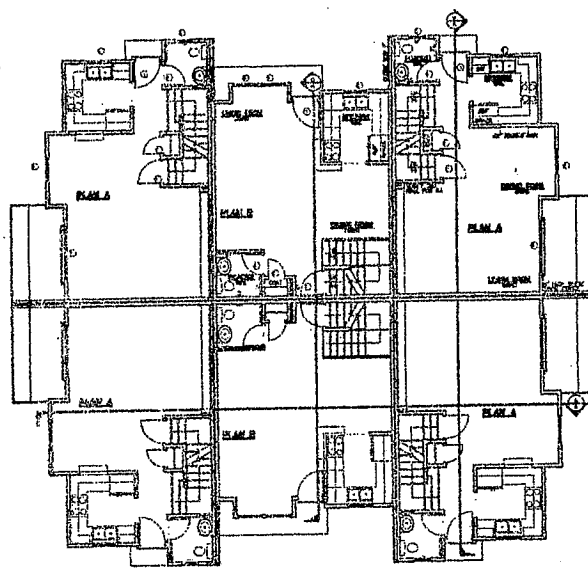
15:out.dwg 5-10-99 9:28:27 AM EST



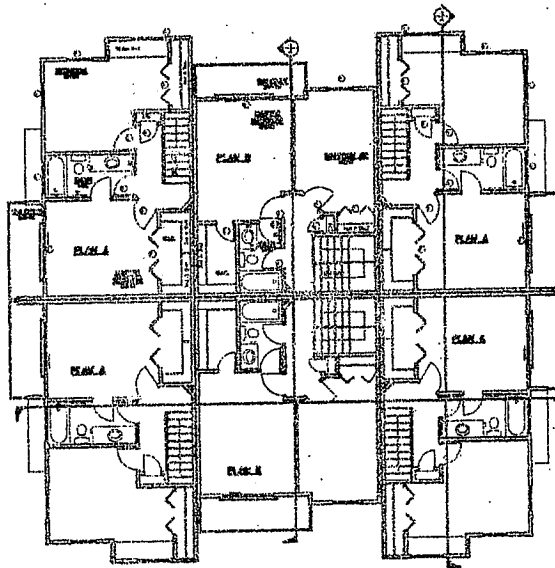


SIX UNIT CONDO TYPE IID  
NTS

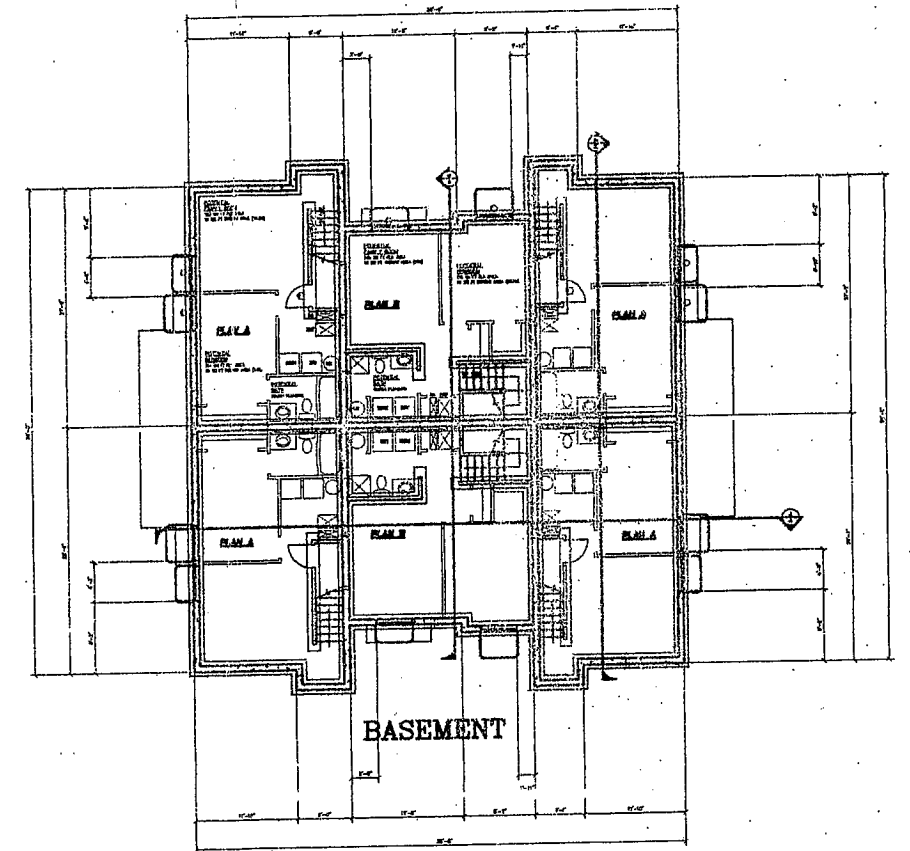
SIX UNIT CONDO TYPE IID  
NTS



1ST LEVEL



2ND LEVEL



BASEMENT

UT 2009-2008 041 07  
RUSSELL H. COVINGTON  
UTAH COUNTY RECORDER  
2008 FEB 15 9:31 AM FEE 274.00 BY 83  
RECORD FOR CITY OF EAGLE POINT

**MCM ENGINEERING, INC.**  
CIVIL/STRUCTURAL/LAND SURVEYING  
P.O. BOX 189  
HEBER, UT 84032  
(435) 654-0938

9756-110 (sheet 3 of 3)

DRAWN BY: SSG DATE: 10/17/08 DESIGNED BY: SSG PROJECT: EAGLE POINT CONDO'S	APPROVED BY: J.C.D./M.C.M. PROJ. NO.: 97288 DESIGNED BY: SSG PROJECT: EAGLE POINT CONDO'S	<b>MCM ENGINEERING, INC.</b> CIVIL/STRUCTURAL/LAND SURVEYING P.O. BOX 189 HEBER CITY, UT 84032 (435) 654-0938	SHT. NAME CONDO LAYOUT & ELEVATIONS	SHT. NO. <b>3</b> OF 3
-------------------------------------------------------------------------------------	----------------------------------------------------------------------------------------------------	---------------------------------------------------------------------------------------------------------------------------	----------------------------------------	------------------------------