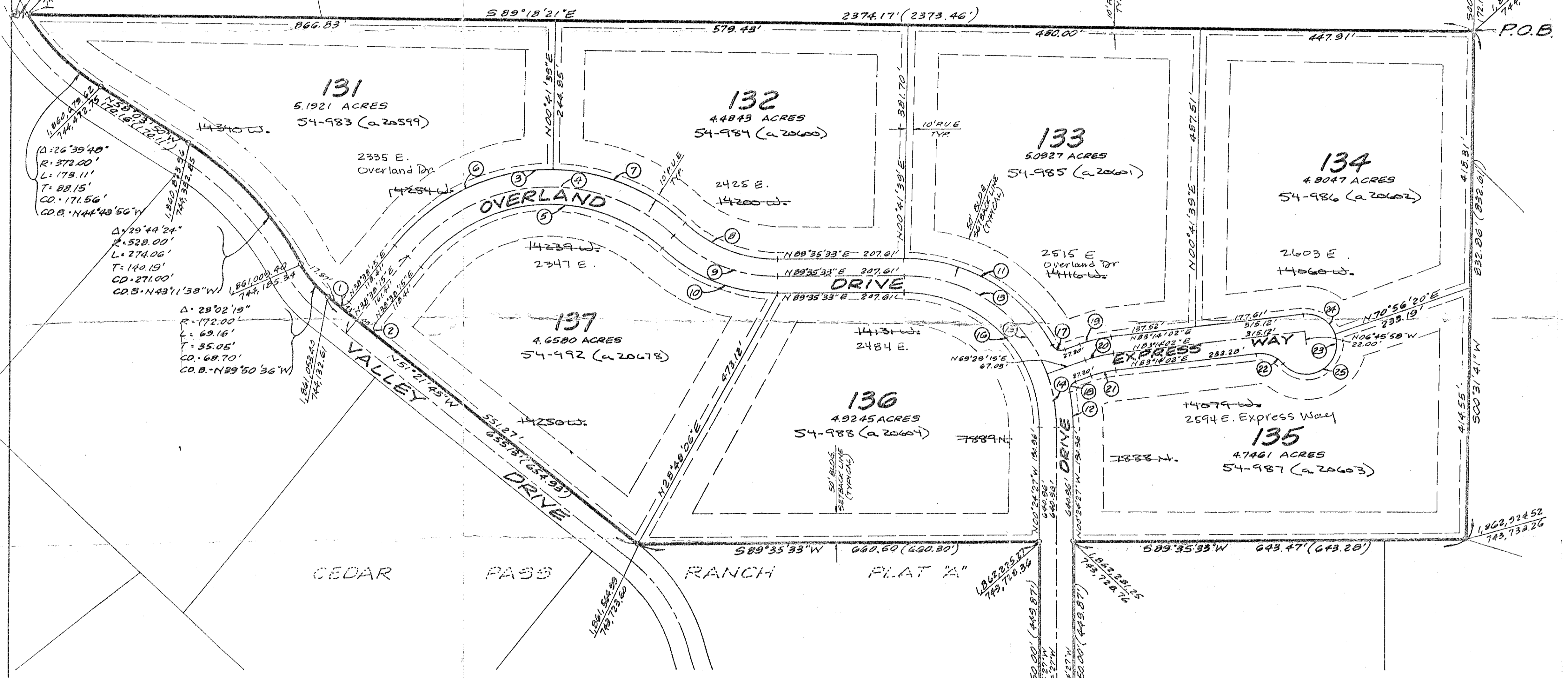


VICINITY MAP

SCALE 1" = 100'



CURVE DATA

Curve #	Radius	Delta	Length	Tangent	Chord/Brg
C1	15.00'	90°00'00"	23.56'	15.00'	21.21' N83-39-15.0E
C2	15.00'	90°00'00"	23.56'	15.00'	21.21' N06-21-46.0N
C3	328.00'	93°59'45"	538.10'	351.71'	479.75' N85-38-07.4E
C4	300.00'	93°59'45"	492.16'	321.69'	438.80' N85-38-07.4E
C5	278.00'	93°59'45"	446.23'	291.66'	397.84' N85-38-07.4E
C6	328.00'	50°03'24"	298.01'	180.18'	287.85' S84-39-57.0N
C7	328.00'	41°56'21"	240.09'	125.71'	234.76' S89-20-10.6E
C8	222.00'	43°02'27"	166.77'	87.54'	162.87' N68-53-13.6N
C9	250.00'	43°02'27"	187.80'	98.58'	183.42' N69-53-13.6N
C10	278.00'	43°02'27"	208.03'	109.52'	203.96' N68-53-13.6N
C11	278.00'	61°27'25"	298.19'	185.25'	294.10' S59-40-44.3E
C12	278.00'	11°39'53"	56.60'	28.40'	56.50' S06-14-23.6E
C13	250.00'	69°53'46"	304.98'	174.71'	286.42' N55-27-34.0N
C14	250.00'	20°08'14"	87.72'	44.32'	87.27' S10-27-34.0E
C15	250.00'	90°00'00"	392.70'	250.00'	353.55' N45-24-27.0N
C16	222.00'	90°00'00"	348.72'	222.00'	313.36' N45-24-27.0N
C17	15.00'	81°33'39"	21.35'	12.94'	19.59' N69-43-51.3N
C18	15.00'	81°33'39"	21.35'	12.94'	19.59' N28-42-28.4E
C19	228.00'	13°44'43"	54.70'	27.48'	54.57' N76-21-40.4E
C20	200.00'	13°44'43"	47.99'	24.11'	47.86' N76-21-40.4E
C21	172.00'	13°44'43"	41.26'	20.73'	41.16' N76-21-40.4E
C22	50.00'	59°56'39"	48.82'	26.82'	48.50' S68-47-38.1E
C23	50.00'	235°56'39"	205.90'	.00'	88.32' S21-12-21.3N
C24	50.00'	77°42'18"	67.81'	40.28'	62.73' S57-54-49.1E
C25	50.00'	458°14'21"	128.00'	260.12'	88.20' N60-02-30.5E

7091-83

SURVEYOR'S CERTIFICATE

I, DAVID V. THOMAS, DO HEREBY CERTIFY THAT I AM A REGISTERED LAND SURVEYOR AND THAT I HOLD CERTIFICATE # 163947 AS PRESCRIBED UNDER THE LAWS OF THE STATE OF UTAH. I FURTHER CERTIFY BY AUTHORITY OF THE OWNERS, I HAVE MADE A SURVEY OF THE TRACT OF LAND SHOWN ON THIS PLAT AND DESCRIBED BELOW, AND HAVE SUBDIVIDED SAID TRACT OF LAND IN LOTS, BLOCKS, STREETS, AND EASEMENTS AND THE SAME HAS BEEN CORRECTLY SURVEYED AND STAKED ON THE GROUND AS SHOWN ON THIS PLAT AND THAT THIS PLAT IS TRUE AND CORRECT.

BOUNDARY DESCRIPTION

COMMENCING AT A POINT 900°31'41"W (72.16' FROM THE NORTH 1/4 COR. SEC. 19, T.52, R.1W), SALT LAKE BASE & MERIDIAN; THENCE AS FOLLOWS:

COURSE	DISTANCE	REMARKS
S70°31'41"W	832.86	FEET; THENCE
S89°35'33"W	643.47	" "
S70°24'27"E	450.00	" "
S89°35'33"W	56.00	" "
N00°24'27"W	450.00	" "
S89°35'33"W	660.50	" "
N51°21'45"W	655.19	FEET; THENCE ALONG THE ARC
Δ=23°02'19"	R=172.00' L=69.16'	(CD=N39°50'36"W-68.70'); THENCE ALONG THE ARC
Δ=2°44'24"	R=52.00' L=27.60'	(CD=N43°11'38"W-27.00'); THENCE ALONG THE ARC
N58°23'50"W	170.16	FEET; THENCE ALONG THE ARC
Δ=26°09'48"	R=372.00' L=133.11'	(CD=N44°43'56"W-171.56'); THENCE ALONG THE ARC
S89°18'21"E	2374.17	FEET TO THE POINT OF BEGINNING.

CONTAINS 37.1972 ACRES (7 LOTS)

BASIS OF BEARING - STATE PLANE COORDINATE SYSTEM

DATE FEB 13, 1997  
 David V. Thomas  
 SURVEYOR (See Seal Below)

OWNER'S DEDICATION

KNOW ALL MEN BY THESE PRESENTS THAT WE, ALL OF THE UNDERSIGNED OWNERS OF ALL THE PROPERTY DESCRIBED IN THE SURVEYOR'S CERTIFICATE HEREON AND SHOWN ON THIS MAP HAVE CAUSED THE SAME TO BE SUBDIVIDED INTO BLOCKS, STREETS AND EASEMENTS AND DO HEREBY DEDICATE THE STREETS AND OTHER PUBLIC AREAS AS INDICATED HEREON FOR PERPETUAL USE OF THE PUBLIC.

IN WITNESS WHEREOF WE HAVE HERETO SET OUR HANDS THIS 13 DAY OF FEB 1997  
 Scott Kirkland for Cedar Pass, L.C.  
 SCOTT KIRKLAND FOR CEDAR PASS L.C.

ACKNOWLEDGEMENT

STATE OF UTAH S.S.  
 COUNTY OF UTAH  
 ON THE 13 DAY OF Feb A.D. 1997 PERSONALLY APPEARED BEFORE ME THE SIGNERS OF THE FOREGOING DEDICATION WHO DULY ACKNOWLEDGE TO ME THAT THEY DID EXECUTE THE SAME.  
 MY COMMISSION EXPIRES 8/27/00  
 Diana A. Palmer  
 NOTARY PUBLIC (See Seal Below)

ACCEPTANCE BY LEGISLATIVE BODY

THE CITY OF EAGLE MOUNTAIN, COUNTY OF UTAH, APPROVES THIS SUBDIVISION AND HEREBY ACCEPTS THE DEDICATION OF ALL STREETS, EASEMENTS AND OTHER PARCELS OF LAND INTENDED FOR PUBLIC PURPOSES FOR THE PERPETUAL USE OF THE PUBLIC THIS 13 DAY OF February, A.D. 1997.

APPROVED: [Signature] ENGINEER (See Seal Below) ATTEST: [Signature] CLERK-RECORDED (See Seal Below)  
 PLANNING COMMISSION APPROVAL  
 APPROVED THIS DAY OF A.D. 19 BY THE PLANNING COMMISSION.  
 DIRECTOR-SECRETARY CHAIRPERSON, PLANNING COMMISSION

PLAT MAP  
 CEDAR PASS RANCH

Subdivision No. 44425  
 1774th COUNTY RECORDER  
 1997 Jan 11 9:58 am 1997 52.08 sq AC  
 10/26/97 FOR COUNCIL TITLE

CITY OF EAGLE MOUNTAIN UTAH COUNTY, UTAH  
 SCALE: 1" = 100 FEET

Notary Public Seal City Engineer's Seal Clerk-Recorder Seal  
 No. 163947  
 DAVID V. THOMAS  
 SURVEYOR  
 State of Utah  
 [Signature] for ACM Engineering, Inc.

Addresses added 5/10/16 by ML